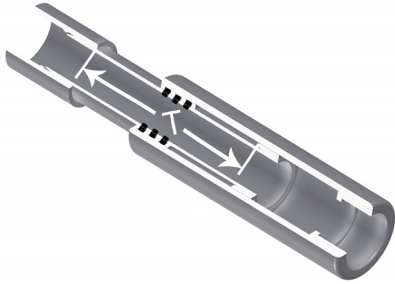


Expansion Joints Product  
**Fabricated Expansion Joints**

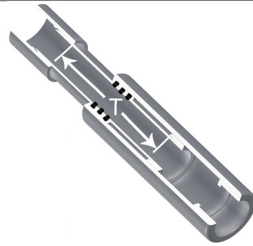


**Fabricated Expansion Joints**  
**Triple O-ring Sealed Telescoping Design**  
 Available with 6" and 12" Travel



- Compact Installation - Eliminates Need For Expansion Loops
- EPDM or FKM Pressure O-ring Seal with Dual "Wiper" O-ring for Extended Life
- Support Piston Eliminates Binding, Minimizes Alignment Problems
- Excellent For Use as a Repair Coupling
- WHEN USED AS A REPAIR COUPLING MUST BE THRUST BLOCKED

Part Number	Size	Travel - T	Std Pk	Mstr Ctn	Prod Code	MSRP
-------------	------	------------	--------	----------	-----------	------



**Fabricated Expansion Joints - PVC**

**6" Travel with EPDM O-rings**

1/2" - 2" 235 psi @ 73°F (23°C)  
 2-1/2" - 12" 150 psi @ 73°F (23°C)  
 14" 100 psi @ 73°F (23°C)

826-005X6	1/2	6	10	0	085	329.51
826-007X6	3/4	6	6	0	085	354.23
826-010X6	1	6	5	0	085	358.22
826-012X6	1-1/4	6	4	0	085	416.37
826-015X6	1-1/2	6	4	0	085	441.51
826-020X6	2	6	2	0	085	493.87
826-025X6	2-1/2	6	1	0	085	563.32
826-030X6	3	6	1	0	085	584.75
826-040X6	4	6	1	0	085	627.55
826-060X6	6	6	1	0	085	1033.89
826-080X6	8	6	1	0	085	1423.38
826-100X6	10	6	1	0	085	1671.45
826-120X6	12	6	1	0	085	2961.62
826-140X6	14	6	1	0	085	3382.97

FKM O-rings available on special order. Add a "V" preceding the dash (-) separator, e.g. 826V-005X6.

Part Number	Size	Travel - T	Std Pk	Mstr Ctn	Prod Code	MSRP
-------------	------	------------	--------	----------	-----------	------

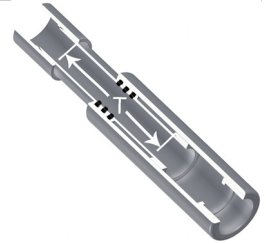
**Fabricated Expansion Joints - PVC**

**12" Travel with EPDM O-rings**

1/2" - 2" 235 psi @ 73°F (23°C)  
 2-1/2" - 12" 150 psi @ 73°F (23°C)  
 14" 100 psi @ 73°F (23°C)

826-005X12	1/2	12	10	0	085	370.64
826-007X12	3/4	12	6	0	085	391.99
826-010X12	1	12	5	0	085	469.73
826-012X12	1-1/4	12	4	0	085	513.23
826-015X12	1-1/2	12	4	0	085	475.55
826-020X12	2	12	2	0	085	560.97
826-025X12	2-1/2	12	1	0	085	942.41
826-030X12	3	12	1	0	085	724.72
826-040X12	4	12	1	0	085	814.15
826-060X12	6	12	1	0	085	1185.98
826-080X12	8	12	1	0	085	1590.04
826-100X12	10	12	1	0	085	1943.94
826-120X12	12	12	1	0	085	3113.63
826-140X12	14	12	1	0	085	3456.07

FKM O-rings available on special order. Add a "V" preceding the dash (-) separator, e.g. 826V-005X12



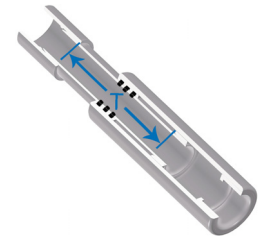
**Fabricated Expansion Joints - CPVC**

**6" Travel with FKM O-rings**

1/2" - 2" 235 psi @ 73°F (23°C)  
 2-1/2" - 12" 150 psi @ 73°F (23°C)  
 14" 100 psi @ 73°F (23°C)

826-005X6C	1/2	6	10	0	085	407.42
826-007X6C	3/4	6	6	0	085	445.83
826-010X6C	1	6	5	0	085	481.89
826-012X6C	1-1/4	6	4	0	085	506.15
826-015X6C	1-1/2	6	4	0	085	551.64
826-020X6C	2	6	2	0	085	699.00
826-025X6C	2-1/2	6	1	0	085	829.47
826-030X6C	3	6	1	0	085	963.61
826-040X6C	4	6	1	0	085	1421.20
826-060X6C	6	6	1	0	085	1527.75
826-080X6C	8	6	1	0	085	2898.09
826-100X6C	10	6	1	0	085	3699.76
826-120X6C	12	6	1	0	085	4908.03
826-140X6C	14	6	1	0	085	10483.43

EPDM O-rings available on special order. Add an "E" preceding the dash (-) separator, e.g. 826E-005X6C

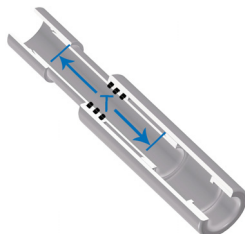




**Expansion Joints Product**  
**Fabricated Expansion Joints & Elastomer Expansion Joints**

**Fabricated Expansion Joints**

Part Number	Size	Travel - T	Std Pk	Mstr Ctn	Prod Code	MSRP
-------------	------	------------	--------	----------	-----------	------



**Fabricated Expansion Joints - CPVC**

**12" Travel with FKM O-rings**

1/2" - 2" 235 psi @ 73°F (23°C)  
 2-1/2" - 12" 150 psi @ 73°F (23°C)  
 14" 100 psi @ 73°F (23°C)

826-005X12C	1/2	12	10	0	085	414.95
826-007X12C	3/4	12	6	0	085	475.85
826-010X12C	1	12	5	0	085	507.62
826-012X12C	1-1/4	12	4	0	085	568.17
826-015X12C	1-1/2	12	4	0	085	637.18
826-020X12C	2	12	2	0	085	813.32
826-025X12C	2 -1/2	12	1	0	085	1231.28
826-030X12C	3	12	1	0	085	989.52
826-040X12C	4	12	1	0	085	1639.14
826-060X12C	6	12	1	0	085	1805.73
826-080X12C	8	12	1	0	085	3457.23
826-100X12C	10	12	1	0	085	4050.27
826-120X12C	12	12	1	0	085	5794.74
826-140X12C	14	12	1	0	085	13795.24

EPDM O-rings available on special order. Add an "E" preceding the dash (-) separator, e.g. 826E-005X12C

**Elastomer Expansion Joints**

**PVC & CPVC Schedule 80 Elastomer Expansion Joint**



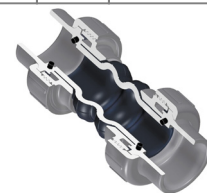
Designed to allow for the expansion, contraction, lateral and angular movement of a piping system. Aids in noise and vibration dampening.

- Convenient, Double Union End Connections with Strong, Buttress Thread Union Nuts
- Internal Nylon Cord Reinforced Elastomer Bellows Tube
- Chemically Resistant Neoprene Elastomer with Optional EPDM Tube Available
- Double Spherical Arch Bellows Provides Improved Movement Capability
- Pressure rated to 150 psi @ 73°F (23°C)
- Suitable for Vacuum Service
- Available in Socket or Spears® Special Reinforced (SR) Female Plastic Thread End Connectors, IPS Sizes 3/4" through 3"

Part Number	Size	Std Pk	Mstr Ctn	Prod Code	MSRP
-------------	------	--------	----------	-----------	------

**Elastomer Expansion Joint - PVC**

**PVC with Neoprene Bellows Socket**

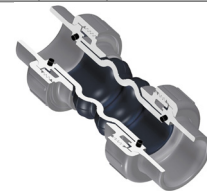


150 psi Maximum Internal Pressure Rating @ 73°F (23°C)

EJ02-007	3/4	10	0	085	208.26
EJ02-010	1	10	0	085	236.15
EJ02-012	1-1/4	15	0	085	251.60
EJ02-015	1-1/2	10	0	085	309.75
EJ02-020	2	8	0	085	379.56
EJ02-025	2-1/2	4	0	085	536.94
EJ02-030	3	2	0	085	738.07

**Elastomer Expansion Joints - PVC**

**PVC with EPDM Bellows Socket**

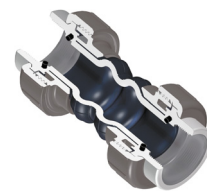


150 psi Maximum Internal Pressure Rating @ 73°F (23°C)

EJ22-007	3/4	10	0	085	212.51
EJ22-010	1	10	0	085	240.94
EJ22-012	1-1/4	15	0	085	259.38
EJ22-015	1-1/2	10	0	085	315.12
EJ22-020	2	8	0	085	387.31
EJ22-025	2-1/2	4	0	085	547.87
EJ22-030	3	2	0	085	753.11

**Elastomer Expansion Joint - PVC**

**PVC with Neoprene Bellows SR Fipt - Stainless Steel Collar**



150 psi Maximum Internal Pressure Rating @ 73°F (23°C)

EJ01-007SR	3/4	10	0	085	211.18
EJ01-010SR	1	10	0	085	240.49