

**Drain, Waste & Vent (DWV) Product**  
**PVC DWV Drain Waste & Vent Pipe and Fittings & PVC DWV Drain Waste & Vent Fittings**



**PVC DWV Drain Waste & Vent Pipe**

Part Number	Size	Std Pk	Plit Qty	Prod Code	MSRP
-------------	------	--------	----------	-----------	------

**Schedule 40 Pipe**

**20" Lengths, Price Per Foot**



Price Per Foot

PD-400-012	1-1/4	20	3300	947	3.21
PD-400-015	1-1/2	20	3020	947	3.64
PD-400-020	2	20	2460	947	5.01
PD-400-030	3	20	1160	947	9.86
PD-400-040	4	20	1120	947	13.81
PD-400-060	6	20	340	947	24.97
PD-400-080	8	20	280	947	44.26
PD-400-100	10	20	220	947	60.24
PD-400-120	12	20	120	947	87.25
PD-400-140	14	20	60	944	35.04
PD-400-160	16	20	60	944	36.54

**PVC DWV Drain Waste & Vent Fittings  
STANDARDS & SPECIFICATIONS**

Standards provide greater assurance of product performance and consistency, and are available to assist design engineers in system specification. The most frequently referenced industry standards for plastic piping systems are ASTM Standard Specifications and Practices. Along with ASTM Standards, additional product specifications and certifications form the basis of product conformance to which Spears® products are manufactured.

**ASTM D 2665** Poly (Vinyl Chloride) (PVC) Plastic Drain, Waste, and Vent Pipe and Fittings.

**ASTM D 3311** Drain, Waste, and Vent (DWV) Plastic Fittings Patterns.

**ASTM F 1866** Poly (Vinyl Chloride) (PVC) Plastic Schedule 40 Drainage and DWV Fittings.Fabricated Fittings.

**ASTM D 1784** Rigid Poly (Vinyl Chloride) (PVC) Compounds and Chlorinated Poly Fittings.(Vinyl Chloride) (CPVC) Compounds.

**NSF** NSF® International Standard 14 (NSF®-dvw) Certified  
 NSF® International Certified to Uniform Plumbing Code (NSF®-U.P. Code). See official listing

**P100 Coupling**

**H x H**



P100-015	1-1/2	100	7200	051	.98
P100-020	2	100	3600	051	1.31
P100-030	3	60	840	051	4.79
P100-040	4	25	450	051	8.26
P100-060	6	5	175	051	26.87
P100-080	8	8	64	051	65.83
P100-100	10	1	36	052	134.05
P100-120	12	1	21	052	228.29
P100-140	14	1	12	052	350.02

Made in the U.S.A.

Part Number	Size	Std Pk	Plit Qty	Prod Code	MSRP
-------------	------	--------	----------	-----------	------

**P101 Female Adapter**

**FPT x H**



P101-015	1-1/2	100	4800	051	1.95
P101-020	2	100	3500	051	3.29
P101-030	3	35	1260	051	8.86
P101-040	4	10	480	051	11.35
P101-060	6	10	180	051	38.14

**P102 Pipe Increaser - Reducer**

**H x H**



P102-251	2X1-1/2	25	4200	051	2.88
P102-337	3X1-1/2	25	1200	051	9.15
P102-338	3X2	20	960	051	7.02
P102-420	4X2	10	720	051	13.94
P102-422	4X3	20	720	051	14.82
3729-528	6X2	1	120	390	111.62
3729-530	6X3	1	120	390	109.87
P102-532	6X4	4	144	051	54.78
P102-582	8X4	2	96	051	83.46
P102-585	8X6	2	96	051	73.54
3729-624	10X4	1	22	390	222.98
P102-626	10X6	1	36	052	342.57
3729-626	10X6	1	32	390	207.80
P102-628	10X8	1	36	052	228.63
3729-628	10X8	1	24	390	145.44
3729-661	12X2	1	9	390	540.39
3729-663	12X3	1	8	390	536.81
3729-664	12X4	1	12	390	419.25
3729-666	12X6	1	12	390	317.89
P102-668	12X8	1	21	052	349.13
3729-670	12X10	1	18	390	211.72
3729-691	14X2	1	18	390	790.24
3729-694	14X4	1	18	390	674.69
3729-696	14X6	1	12	390	653.18
3729-698	14X8	1	18	390	472.81
3729-700	14X10	1	18	390	399.33
3729-702	14X12	1	16	390	354.62

**Pipe Increaser - Eccentric Reducer**

**H x H**



P102-338E	3X2	20	600	051	20.47
3729-528E <sup>2</sup>	6X2	1	48	390	108.52
3729-530E <sup>2</sup>	6X3	1	72	390	99.96
3729-532E <sup>1</sup>	6X4	1	96	390	49.98
3729-580E <sup>3</sup>	8X3	1	22	390	206.17
3729-582E <sup>2</sup>	8X4	1	22	390	102.95
3729-585E	8X6	1	32	390	83.22
3729-624E <sup>2</sup>	10X4	1	16	390	235.40



**Drain, Waste & Vent (DWV) Product**  
**PVC DWV Drain Waste & Vent Fittings**

**PVC DWV Drain Waste & Vent Fittings**

Part Number	Size	Std Pk	P/lt Qty	Prod Code	MSRP
-------------	------	--------	----------	-----------	------

**Pipe Increaser - Eccentric Reducer (continued)**

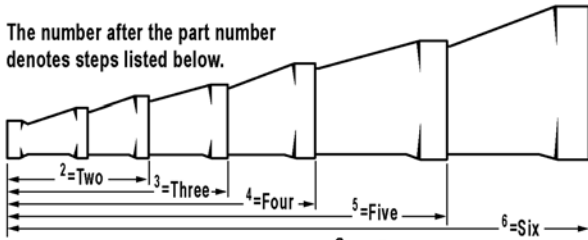
**H x H**

3729-626E	10X6	1	20	390	216.44
3729-628E	10X8	1	24	390	204.06
3729-664E <sup>3</sup>	12X4	1	12	390	439.20
3729-666E <sup>2</sup>	12X6	1	12	390	360.88
3729-668E <sup>2</sup>	12X8	1	12	390	239.32
3729-670E	12X10	1	18	390	207.49

**Eccentric Reducer Footnotes**

**Multi-Step Configurations**

The number after the part number denotes steps listed below.



Example: 3729-528E<sup>2</sup> (2 = 2 Step)

**P103 Trap Adapter - Male**

**S x SLIP**

P103-015	1-1/2	50	5250	051	2.65
P103-020	2	25	4200	051	7.31

**P103P Trap Adapter - Male**

**S x SLIP w/Plastic Nut - Built-in Washer**

P103P-212	1-1/2X1-1/4	75	5400	051	3.02
P103P-015	1-1/2	50	5250	051	2.81
P103P-020	2	25	4200	051	9.68

**P103R Trap Adapter - Male with 1-1/2 Plastic Nut & Washer and 1-1/2 x1-1/4 Washer**

**S x SLIP w/Plastic Nut**

P103R-015	1-1/2	50	3600	051	2.91
-----------	-------	----	------	-----	------

**P103X Trap Adapter-Male**

**S x SLIP w/Chrome Nut & Washer**

P103X-212	1-1/2X1-1/4	100	7200	051	4.25
P103X-015	1-1/2	50	5250	051	12.29
P103X-020	2	25	4200	051	12.40

Part Number	Size	Std Pk	P/lt Qty	Prod Code	MSRP
-------------	------	--------	----------	-----------	------

**P104 Trap Adapter - Female**

**H x SLIP**

P104-012	1-1/4	50	8400	051	1.95
P104-015	1-1/2	50	8400	051	2.06
P104-020	2	50	3600	051	5.94

**P104P Trap Adapter - Female**

**H x SLIP w/Plastic Nut**

P104P-212	1-1/2X1-1/4	50	5250	051	3.04
P104P-012	1-1/4	50	5250	051	9.00
P104P-015	1-1/2	50	5250	051	2.60

**P104R Trap Adapter - Female w/1-1/2 Plastic Nut & Washer and 1-1/2x1-1/4 Washer**

**H x SLIP w/Plastic Nut**

P104R-015	1-1/2	50	3600	051	2.95
-----------	-------	----	------	-----	------

**P104X Trap Adapter - Female**

**H x SLIP w/Chrome Nut & Washer**

P104X-212	1-1/2X1-1/4	50	3600	051	4.25
P104X-015	1-1/2	50	3600	051	12.29
P104X-020	2	50	3600	051	12.40

**P000P HDPE Slip Joint Nut**

**(Plastic Nut)**

P000P-015	1-1/2	100	18000	051	.91
P000P-020	2	450	13500	051	1.45
P000P-169	1-1/4X1-1/2	350	16800	051	1.56

**P105 Fitting Cleanout Adapter**

**S x FPT**

P105-015	1-1/2	50	5250	051	2.23
P105-020	2	50	3600	051	3.15
P105-030	3	25	1200	051	8.89
P105-040	4	10	720	051	14.61
P105-060	6	10	180	051	39.15
P105-080	8	8	112	051	115.86

Drain, Waste & Vent (DWV) Product  
**PVC DWV Drain Waste & Vent Fittings**



**PVC DWV Drain Waste & Vent Fittings**

Part Number	Size	Std Pk	Pklt Qty	Prod Code	MSRP
-------------	------	--------	----------	-----------	------

**P105H Female Cleanout Adapter**

**H x FPT**



P105H-040	4	10	720	051	11.35
P105H-060	6	10	180	051	38.14
P105H-080	8	8	112	051	49.51

**P105X Fitting Cleanout Adapter w/C.O. Plug**

**S x FPT**



P105X-015	1-1/2	50	5250	051	3.35
P105X-020	2	50	3600	051	4.59
P105X-030	3	25	900	051	9.28
P105X-040	4	10	480	051	16.81
P105X-060	6	10	180	051	48.45
P105X-080	8	8	112	051	144.77
3978-100*	10	1	64	400	489.93
3978-120*	12	1	32	400	684.02
3978-140*	14	1	16	400	848.24

\* PVC Gray with HDPE Plug

**P106 Cleanout Plug**

**MPT**



P106-015	1-1/2	50	12000	051	1.83
P106-020	2	50	8400	051	1.89
P106-025	2-1/2	50	5250	051	6.07
P106-030	3	25	2625	051	3.64
P106-040	4	30	2160	051	5.39
P106-060	6	10	1050	051	17.91
P106-080	8	12	576	051	93.31

**P107 Flush Bushing**

**S x H**



P107-251	2X1-1/2	50	8400	051	1.77
P107-337	3X1-1/2	30	2520	051	8.56
P107-338	3X2	30	2520	051	3.92
P107-420	4X2	30	1080	051	14.91
P107-422	4X3	30	1080	051	7.60
P107-532	6X4	10	300	051	39.42
P107-582	8X4	3	144	051	77.94
P107-585	8X6	4	120	051	85.78
P107-624 <sup>1</sup>	10X4	2	60	052	174.55
P107-626 <sup>1</sup>	10X6	3	90	052	253.88
P107-628	10X8	3	90	052	282.98
P107-666 <sup>1</sup>	12X6	2	42	052	379.80
P107-668 <sup>1</sup>	12X8	2	60	052	390.79

Part Number	Size	Std Pk	Pklt Qty	Prod Code	MSRP
-------------	------	--------	----------	-----------	------

**P107 Flush Bushing (continued)**

**S x H**

P107-670	12X10	2	60	052	398.89
----------	-------	---	----	-----	--------

<sup>1</sup>Outlet-sized with Bushing

**P108 Flush Bushing (Cleanout Adapter)**

**S x FPT**



P108-212	1-1/2X1-1/4	50	12000	051	5.49
P108-628	10X8	4	56	052	543.07
P108-668	12X8	1	30	052	788.88

**P108X Flush Bushing (Cleanout Adapter) w/Plug**

**S x FPT**



P108X-628	10X8	1	56	052	799.12
P108X-668	12X8	1	30	052	1169.24

**P109 Male Adapter (Will not accept tail piece)**

**MPT x H**



P109-015	1-1/2	50	5250	051	2.01
P109-020	2	50	3600	051	2.60
P109-030	3	25	1200	051	7.51
P109-040	4	25	900	051	16.60
P109-060	6	7	245	051	49.98

**P110 Flush C.O. Plug**

**MPT**



P110-015	1-1/2	25	9600	051	7.40
P110-020	2	25	9600	051	6.19
P110-025	2-1/2	50	5250	051	7.78
P110-030	3	50	5250	051	7.17
P110-040	4	25	2400	051	7.03
P110-060	6	10	960	051	17.74

**P116 Cap**

**SOC**



P116-015	1-1/2	20	7680	051	4.15
P116-020	2	15	5760	051	6.88
P116-030	3	10	1680	051	11.94
P116-040	4	5	840	051	17.05
P116-060	6	5	240	051	43.04
P116-080	8	3	90	051	128.99
3747-100	10	1	108	390	123.15
3747-120	12	1	70	390	155.52
3747-140	14	1	44	390	264.43

Note: 8" Cap is Domed Style



**Drain, Waste & Vent (DWV) Product**  
**PVC DWV Drain Waste & Vent Fittings**

**PVC DWV Drain Waste & Vent Fittings**

Part Number	Size	Std Pk	Pklt Qty	Prod Code	MSRP
-------------	------	--------	----------	-----------	------

**P117 Adapter Coupling (Adapts S&D Spigot to DWV Spigot)**

**H x H**

P117-040	<b>4</b>	20	700	051	16.01
P117-422	<b>4X3</b>	20	600	051	12.19



**P118 Adapter Bushing (Adapts DWV Hub to S&D Spigot)**

**DWV SPIGOT x S&D HUB**

P118-030	<b>3</b>	25	1800	051	5.89
P118-040	<b>4</b>	10	1050	051	6.37
P118-060F	<b>6</b>	1	240	390	36.19



**P119 No-Hub Adapter**

**S x H**

P119-015	<b>1-1/2</b>	25	4200	051	11.12
P119-020	<b>2</b>	25	2625	051	5.40
P119-030	<b>3</b>	20	960	051	7.80
P119-040	<b>4</b>	15	720	051	10.04
P119-060F	<b>6</b>	1	80	390	84.27
P119-080F	<b>8</b>	1	60	390	115.95
P119-100F	<b>10</b>	1	32	390	231.45
P119-120F	<b>12</b>	1	16	390	260.76
P119-251	<b>2X1-1/2</b>	35	3675	051	10.55
P119-422	<b>4X3</b>	10	720	051	12.83



**P122 Spigot Adapter, Cast Iron**

**H x H**

P122-040	<b>4</b>	15	210	051	20.83
----------	----------	----	-----	-----	-------



**P123 Hub Adapter, Cast Iron**

**H x S**

P123-020	<b>2</b>	20	1440	051	8.75
P123-030	<b>3</b>	25	750	051	15.67
P123-040	<b>4</b>	10	350	051	27.41



**P123R Hub Adapter, Cast Iron, Increaser**

**H x S**

Plain End: Joint can be made with compression gasket or plastic lead & seal rope - Do Not use hot lead

P123R-213	<b>1-1/2X2</b>	10	1680	051	10.02
-----------	----------------	----	------	-----	-------



Part Number	Size	Std Pk	Pklt Qty	Prod Code	MSRP
-------------	------	--------	----------	-----------	------

**P123R Hub Adapter, Cast Iron, Increaser (continued)**

**H x S**

P123R-342	<b>3X4</b>	10	350	051	18.48
-----------	------------	----	-----	-----	-------

**P130 Repair Coupling**

**H x H**

P130-015	<b>1-1/2</b>	25	6000	051	5.64
P130-020	<b>2</b>	25	2625	051	3.95
P130-030	<b>3</b>	10	960	051	9.95
P130-040	<b>4</b>	5	480	051	19.14
P130-060	<b>6</b>	5	175	051	70.34
P130-080	<b>8</b>	8	64	051	85.80
P130-100	<b>10</b>	1	36	052	185.76



**P131 Test Cap**

P131-015	<b>1-1/2</b>	100	38400	051	1.49
P131-020	<b>2</b>	100	24000	051	1.42
P131-030	<b>3</b>	50	8400	051	1.83
P131-040	<b>4</b>	100	4800	051	2.29



**P300 1/4 Bend**

**H x H**

P300-015	<b>1-1/2</b>	100	3000	051	2.19
P300-020	<b>2</b>	50	1500	051	3.22
P300-030	<b>3</b>	25	350	051	9.99
P300-040	<b>4</b>	10	180	051	18.25
P300-060	<b>6</b>	4	56	051	67.08
P300-080	<b>8</b>	2	28	051	135.85
P300-100	<b>10</b>	1	12	052	363.18
P300-120	<b>12</b>	1	5	052	559.35



**P300S 1/4 Bend with Side Inlet**

**ALL HUB**

P300S-338	<b>3X3X2</b>	10	360	051	19.78
-----------	--------------	----	-----	-----	-------



**P302 1/4 Bend, Street**

**S x H**

P302-015	<b>1-1/2</b>	100	3000	051	2.68
P302-020	<b>2</b>	50	1500	051	4.15
P302-030	<b>3</b>	20	360	051	10.27
P302-040	<b>4</b>	10	180	051	20.21
P302-060	<b>6</b>	4	56	051	93.44
P302-080	<b>8</b>	2	28	051	186.29
P302-100	<b>10</b>	1	12	052	361.63



**Drain, Waste & Vent (DWV) Product**  
**PVC DWV Drain Waste & Vent Fittings**



**PVC DWV Drain Waste & Vent Fittings**

Part Number	Size	Std Pk	Pilt Qty	Prod Code	MSRP
-------------	------	--------	----------	-----------	------

**P302 1/4 Bend, Street (continued)**

**S x H**

P302-120	12	1	5	052	557.28
----------	----	---	---	-----	--------



**P303 1/4 Bend w/Low Heel Inlet**

**H x H x H**

P303-338	3X3X2	25	200	051	17.46
P303-420	4X4X2	6	180	051	34.45



**P304 Long Sweep 1/4 Bend**

**H x H**

P304-015	1-1/2	50	1750	051	5.02
P304-020	2	25	875	051	5.41
P304-030	3	10	360	051	12.44
P304-040	4	5	150	051	23.74
P304-060 <sup>1</sup>	6	5	35	051	91.37

<sup>1</sup>6" size assembled from 2-Molded 1/8 Bends

**P306 1/4 Bend w/Low Heel Inlet**

**S x H x H**

P306-420	4X4X2	5	150	051	34.45
----------	-------	---	-----	-----	-------



**P309 Long Sweep 1/4 Bend, Street**

**H x S**

P309-015	1-1/2	50	1750	051	6.62
P309-020	2	25	900	051	8.42
P309-030	3	20	280	051	23.15
P309-040	4	5	150	051	35.65
P309-060	6	5	35	051	164.82



**P310 1/4 Bend, Street w/Low Heel Inlet**

**H x S x H**

P310-338	3X3X2	15	270	051	31.25
----------	-------	----	-----	-----	-------



**P319 1/6 Bend**

**H x H**

P319-015	1-1/2	40	2880	051	3.94
P319-020	2	25	1200	051	5.24
P319-030	3	20	600	051	18.62
P319-040	4	10	180	051	26.47



Part Number	Size	Std Pk	Pilt Qty	Prod Code	MSRP
-------------	------	--------	----------	-----------	------

**P319 1/6 Bend (continued)**

**H x H**

3724-060	6	1	56	390	134.34
3724-080	8	1	28	390	191.66
3724-100	10	1	10	390	321.19
3724-120	12	1	5	390	420.82
3724-140	14	1	4	390	771.37

**P320 1/6 Bend, Street**

**H x S**

P320-015	1-1/2	40	2880	051	7.85
P320-020	2	25	1800	051	10.64
P320-030	3	20	360	051	24.92
P320-040	4	10	300	051	33.31



**P321 1/8 Bend**

**H x H**

P321-015	1-1/2	100	3000	051	2.01
P321-020	2	50	1500	051	3.09
P321-030	3	25	450	051	8.46
P321-040	4	15	270	051	14.55
P321-060	6	5	90	051	61.40
P321-080	8	1	36	051	122.03
P321-100	10	1	21	052	304.76
P321-120	12	1	12	052	419.35
3717-140	14	1	6	390	539.12



**P323 1/8 Bend, Street**

**H x S**

P323-015	1-1/2	100	3600	051	2.03
P323-020	2	50	1800	051	3.12
P323-030	3	25	450	051	8.14
P323-040	4	10	300	051	13.17
P323-060	6	5	90	051	75.19
P323-080	8	1	36	051	132.44
3727-100	10	1	16	390	221.39
3727-120	12	1	10	390	310.93
3727-140	14	1	6	390	539.12



**P324 1/16 Bend**

**H x H**

P324-015	1-1/2	50	3600	051	2.88
P324-020	2	25	1800	051	3.56
P324-030	3	20	720	051	9.13
P324-040	4	15	270	051	13.94
P324-060	6	3	105	051	83.82
P324-080	8	2	36	051	99.80





**Drain, Waste & Vent (DWV) Product**  
**PVC DWV Drain Waste & Vent Fittings**

**PVC DWV Drain Waste & Vent Fittings**

Part Number	Size	Std Pk	Pklt Qty	Prod Code	MSRP
<b>P324 1/16 Bend (continued)</b>					
<b>H x H</b>					
3716-100	10	1	30	390	177.41
3716-120	12	1	12	390	280.65
3716-140	14	1	6	390	441.23

**P326 1/16 Bend, Street**

Part Number	Size	Std Pk	Pklt Qty	Prod Code	MSRP
<b>H x S</b>					
P326-015	1-1/2	50	3600	051	8.14
P326-020	2	25	1800	051	8.69
P326-030	3	20	720	051	13.69
P326-040	4	10	350	051	19.95
P326-060	6	5	90	051	81.19
P326-080	8	2	36	051	111.76
3742-100	10	1	30	390	195.14
3742-120	12	1	12	390	308.71
3742-140	14	1	6	390	485.34

**P327 Double 1/4 Bend**

Part Number	Size	Std Pk	Pklt Qty	Prod Code	MSRP
<b>H x H x H</b>					
P327-015	1-1/2	20	1440	051	7.16
P327-020	2	25	875	051	10.02
P327-030	3	15	270	051	30.65
P327-040	4	6	108	051	42.31

**P327 Double 1/4 Bend, Reducing**

Part Number	Size	Std Pk	Pklt Qty	Prod Code	MSRP
<b>H x H x H</b>					
P327-241	2X1-1/2X1-1/2	25	1200	051	9.54

**P329 Closet Bend, Reducing**

Part Number	Size	Std Pk	Pklt Qty	Prod Code	MSRP
<b>H x H</b>					
P329-342	3X4	10	300	051	15.69

**P330 Closet Bend, Reducing**

Part Number	Size	Std Pk	Pklt Qty	Prod Code	MSRP
<b>H x S</b>					
P330-342	3X4	10	300	051	21.23

**P330X Closet Bend, Reducing with TEST CAP**

Part Number	Size	Std Pk	Pklt Qty	Prod Code	MSRP
<b>H x S</b>					
P330X-342	3X4	10	300	051	29.12

Part Number	Size	Std Pk	Pklt Qty	Prod Code	MSRP
-------------	------	--------	----------	-----------	------

**P331 Vent Ell**

Part Number	Size	Std Pk	Pklt Qty	Prod Code	MSRP
<b>H x H</b>					
P331-015	1-1/2	25	1800	051	4.19
P331-020	2	30	1440	051	5.84
P331-030	3	25	450	051	14.71
P331-040	4	10	180	051	36.99
P331-060	6	5	40	051	116.58
P331-080	8	2	28	051	121.48
P331-100	10	1	16	052	344.99
P331-120	12	1	12	052	531.42
3706-140	14	1	2	390	547.88

**P333 Vent Ell, Street**

Part Number	Size	Std Pk	Pklt Qty	Prod Code	MSRP
<b>H x S</b>					
P333-015	1-1/2	25	3150	051	3.56
P333-020	2	20	1440	051	6.08
P333-030	3	25	450	051	15.99
P333-040	4	10	180	051	55.48
3709-060	6	1	32	390	128.56
3709-080	8	1	16	390	176.84
3709-100	10	1	10	390	295.49
3709-120	12	1	5	390	430.64
3709-140	14	1	2	390	595.52

**P400 Sanitary Tee**

Part Number	Size	Std Pk	Pklt Qty	Prod Code	MSRP
<b>ALL HUB</b>					
P400-015	1-1/2	60	1800	051	3.77
P400-020	2	30	900	051	5.56
P400-030	3	30	240	051	14.24
P400-040	4	5	150	051	24.80
P400-060	6	6	42	051	108.24
P400-080	8	2	16	051	324.03
P400-100	10	1	7	052	849.05
P400-120	12	1	5	052	1183.64
3790-140	14	1	3	390	1478.13

**P401 Sanitary Tee, Reducing**

Part Number	Size	Std Pk	Pklt Qty	Prod Code	MSRP
<b>ALL HUB</b>					
P401-241	2X1-1/2X1-1/2	25	875	051	4.87
P401-251	2X2X1-1/2	50	900	051	4.91
P401-257	2X1-1/2X2	25	875	051	5.91
P401-337	3X3X1-1/2	10	350	051	9.03
P401-338	3X3X2	10	350	051	10.64
P401-420	4X4X2	10	300	051	23.20
P401-422	4X4X3	10	180	051	31.52
3790-528	6X2	1	32	390	109.76

**Drain, Waste & Vent (DWV) Product**  
**PVC DWV Drain Waste & Vent Fittings**



**PVC DWV Drain Waste & Vent Fittings**

Part Number	Size	Std Pk	Plit Qty	Prod Code	MSRP
<b>P401 Sanitary Tee, Reducing (continued)</b>					
<b>ALL HUB</b>					
3790-530	6X3	1	32	390	120.51
P401-532	6X4	4	72	051	104.72
3790-578	8X2	1	16	390	167.71
3790-580	8X3	1	16	390	221.61
3790-582	8X4	1	16	390	210.29
3790-585	8X6	1	8	390	251.92
3790-621	10X2	1	16	390	257.36
3790-623	10X3	1	8	390	261.72
3790-624	10X4	1	8	390	280.41
3790-626	10X6	1	8	390	360.88
3790-628	10X8	1	6	390	441.87
3790-661	12X2	1	6	390	431.86
3790-663	12X3	1	6	390	436.79
3790-664	12X4	1	4	390	449.56
3790-666	12X6	1	6	390	490.17
3790-668	12X8	1	6	390	545.75
3790-670	12X10	1	6	390	687.45
3790-691	14X2	1	4	390	585.65
3790-693	14X3	1	4	390	635.48
3790-694	14X4	1	6	390	641.69
3790-696	14X6	1	4	390	765.28
3790-698	14X8	1	4	390	872.88
3790-700	14X10	1	4	390	1048.49
3790-702	14X12	1	2	390	1236.07

**P403 Sanitary Tee, Street**

**S x H x H**



P403-015	1-1/2	20	1440	051	10.18
P403-020	2	25	750	051	11.11
P403-030	3	30	210	051	18.47
P403-040	4	10	140	051	48.23
P403-060	6	4	32	051	98.12
P403-080	8	2	16	051	335.72
P403-100	10	1	10	052	940.71
P403-120	12	1	8	052	1408.99

**P404 Sanitary Tee, Street, Reducing**

**S x H x H**



P404-241	2X1-1/2X1-1/2	50	1500	051	9.27
P404-251	2X2X1-1/2	50	700	051	8.68
P404-257	2X1-1/2X2	50	900	051	8.40
P404-337	3X3X1-1/2	10	350	051	19.32
P404-338	3X3X2	10	350	051	18.24
P404-420	4X4X2	5	240	051	29.12
P404-422	4X4X3	5	150	051	32.63

Part Number	Size	Std Pk	Plit Qty	Prod Code	MSRP
-------------	------	--------	----------	-----------	------

**P416 Sanitary Tee with Left Side Inlet**

**ALL HUB**



P416-337	3X3X3X1-1/2	10	180	051	27.57
P416-338	3X3X3X2	10	180	051	26.56
P416-420	4X4X4X2	4	120	051	47.48

**P417 Sanitary Tee with Right Side Inlet**

**ALL HUB**



P417-337	3X3X3X1-1/2	10	180	051	27.57
P417-338	3X3X3X2	10	180	051	26.56
P417-420	4X4X4X2	10	80	051	150.62

**P418 Sanitary Tee with R&L Side Inlets**

**ALL HUB**



P418-337	3X3X3X1-1/2	5	175	051	36.26
P418-338	3X3X3X2X2	5	150	051	35.14
P418-420	4X4X4X2X2	5	90	051	153.46

**P428 Double Sanitary Tee**

**ALL HUB**



P428-015	1-1/2	25	1200	051	7.74
P428-020	2	25	750	051	11.34
P428-030	3	8	240	051	31.72
P428-040	4	6	108	051	50.99
3791-060	6	1	6	390	222.04
3791-080	8	1	5	390	354.07
3791-100	10	1	3	390	632.38
3791-120	12	1	3	390	918.02
3791-140	14	1	2	390	1590.04

**P429 Double Sanitary Tee, Reducing**

**ALL HUB**



P429-251	2X2X1-1/2X1-1/2	25	900	051	8.56
P429-337	3X3X1-1/2X1-1/2	6	432	051	18.20
P429-338	3X3X2X2	10	300	051	19.14
P429-419	4X4X1-1/2X1-1/2	7	245	051	67.44
P429-420	4X4X2X2	7	245	051	42.18
P429-422	4X4X3X3	8	144	051	43.28
3791-528	6X2	1	24	390	244.88
3791-530	6X3	1	8	390	166.58
3791-532	6X4	1	8	390	172.96
3791-578	8X2	1	16	390	194.13
3791-580	8X3	1	8	390	241.91
3791-582	8X4	1	4	390	246.41



**Drain, Waste & Vent (DWV) Product**  
**PVC DWV Drain Waste & Vent Fittings**

**PVC DWV Drain Waste & Vent Fittings**

Part Number	Size	Std Pk	Pklt Qty	Prod Code	MSRP
<b>P429 Double Sanitary Tee, Reducing (continued)</b>					
<b>ALL HUB</b>					
3791-585	8X6	1	5	390	279.24
3791-621	10X2	1	8	390	288.80
3791-623	10X3	1	6	390	302.46
3791-624	10X4	1	4	390	309.15
3791-626	10X6	1	4	390	388.96
3791-628	10X8	1	4	390	483.95
3791-661	12X2	1	6	390	467.98
3791-663	12X3	1	6	390	477.88
3791-664	12X4	1	4	390	488.63
3791-666	12X6	1	4	390	542.97
3791-668	12X8	1	4	390	609.18
3791-670	12X10	1	6	390	757.92
3791-691	14X2	1	4	390	638.12
3791-693	14X3	1	4	390	720.07
3791-694	14X4	1	4	390	761.59
3791-696	14X6	1	4	390	866.54
3791-698	14X8	1	4	390	953.34
3791-700	14X10	1	4	390	1128.26
3791-702	14X12	1	3	390	1331.37

**P439 Double Sanitary Tee with R&L Side Inlets**



**ALL HUB**

P439-338	3X3X3X3X2X2	4	120	051	40.47
P439-420	4X4X4X4X2X2	4	72	051	56.39

**P441 Vent Tee**



**ALL HUB**

P441-015	1-1/2	25	1800	051	9.74
P441-020	2	25	900	051	8.26
P441-030	3	10	300	051	25.71
P441-040	4	5	175	051	34.05
P441-060	6	4	32	051	92.44
P441-080	8	2	28	051	238.04
P441-100	10	1	12	052	443.74
P441-120	12	1	10	052	737.67
3701-140	14	1	4	390	1015.36

**P442 Vent Tee, Reducing**



**ALL HUB**

P442-251	2X1-1/2	25	1200	051	9.97
3701-528	6X2	1	40	390	106.01
3701-530	6X3	1	24	390	111.35
P442-532	6X4	2	72	051	66.88
3701-578	8X2	1	24	390	124.64
3701-580	8X3	1	24	390	130.71

Part Number	Size	Std Pk	Pklt Qty	Prod Code	MSRP
-------------	------	--------	----------	-----------	------

**P442 Vent Tee, Reducing (continued)**

**ALL HUB**

P442-582	8X4	2	36	051	73.55
P442-585	8X6	2	28	051	95.04
3701-621	10X2	1	24	390	202.91
3701-623	10X3	1	12	390	206.66
P442-624	10X4	1	12	052	283.32
P442-626	10X6	1	14	052	348.61
P442-628	10X8	1	12	052	393.26
3701-661	12X2	1	10	390	270.89
3701-663	12X3	1	8	390	274.89
P442-664	12X4	1	10	052	383.03
P442-666	12X6	1	10	052	437.40
P442-668	12X8	1	10	052	503.06
P442-670	12X10	1	10	052	600.26
3701-691	14X2	1	12	390	429.61
3701-693	14X3	1	8	390	475.49
3701-694	14X4	1	12	390	530.12
3701-696	14X6	1	6	390	622.14
3701-698	14X8	1	6	390	741.76
3701-700	14X10	1	6	390	843.17
3701-702	14X12	1	4	390	997.45

**3701 Test Tee**



**SOC x FPT with Plug**

3701-060TEST	6	1	48	390	432.76
3701-080TEST	8	1	22	390	479.64
3701-100TEST	10	1	7	390	704.96
3701-120TEST	12	1	8	390	1200.56

**P444X Cleanout Tee w/C.O. Plug**



**H x H**

P444X-015	1-1/2	20	1440	051	9.55
P444X-020	2	10	720	051	11.03
P444X-030	3	10	350	051	21.07
P444X-040	4	10	180	051	33.17
P444X-060	6	2	70	051	168.34

**P445 Flush C.O. Tee**



**H x H x FPT**

P445-015	1-1/2	20	2100	051	6.85
P445-020	2	25	1200	051	8.42
P445-030	3	10	350	051	16.81
P445-040	4	10	180	051	31.27
P445-060	6	3	54	051	105.02



**Drain, Waste & Vent (DWV) Product**  
**PVC DWV Drain Waste & Vent Fittings**



**PVC DWV Drain Waste & Vent Fittings**

Part Number	Size	Std Pk	Pilt Qty	Prod Code	MSRP
-------------	------	--------	----------	-----------	------

**P445X Flush C.O. Tee w/C.O. Plug**

**H x H**



P445X-015	1-1/2	20	1440	051	8.94
P445X-020	2	10	1050	051	13.09
P445X-030	3	10	300	051	24.67
P445X-040	4	10	180	051	33.81
P445X-060	6	2	36	051	168.34

**P447 Horizontal Twin Tee**

**ALL HUB**



P447-337	3X3X1-1/2X1-1/2	5	360	051	49.87
----------	-----------------	---	-----	-----	-------

**P448 2-WAY Cleanout**

**ALL HUB**



P448-030	3	12	216	051	33.97
P448-040	4	5	90	051	43.98

**P500 Double Fixture Fitting**

**ALL HUB**



P500-020	2X2X2X2	10	360	051	19.28
P500-030	3X3X3X3	10	80	051	41.67
P500-241	2X1-1/2X1-1/2X1-1/2	20	600	051	21.23
P500-251	2X2X1-1/2X1-1/2	20	600	051	22.18
P500-338	3X2X3X3	10	80	051	41.26

**P501 Combination Wye and 1/8 Bend (One Piece)**

**ALL HUB**



P501-015	1-1/2	50	900	051	8.20
P501-020	2	20	600	051	9.76
P501-030	3	10	180	051	23.69
P501-040	4	8	96	051	42.13
3777-060	6	1	20	390	208.07
3777-080	8	1	8	390	331.82
3777-100	10	1	8	390	592.66
3777-120	12	1	3	390	860.37
3777-140	14	1	2	390	1490.26

Part Number	Size	Std Pk	Pilt Qty	Prod Code	MSRP
-------------	------	--------	----------	-----------	------

**P502 Combination Wye and 1/8 Bend, Reducing (One Piece)**

**ALL HUB**



P502-251	2X2X1-1/2	20	700	051	11.79
P502-337	3X3X1-1/2	15	450	051	20.43
P502-338	3X3X2	10	180	051	15.66
P502-420	4X4X2	5	150	051	26.13
P502-422	4X4X3	5	90	051	31.83
3777-528	6X2	1	32	390	151.64
3777-532	6X4	1	32	390	162.11
3777-578	8X2	1	16	390	181.95
3777-580	8X3	1	24	390	226.73
3777-621	10X2	1	16	390	270.66
3777-623	10X3	1	8	390	283.48
3777-624	10X4	1	8	390	289.75
3777-626	10X6	1	4	390	364.52
3777-628	10X8	1	8	390	453.57
3777-661	12X2	1	4	390	438.61
3777-663	12X3	1	4	390	447.87
3777-664	12X4	1	6	390	457.96
3777-666	12X6	1	6	390	508.87
3777-668	12X8	1	6	390	570.91
3777-670	12X10	1	6	390	710.32
3777-691	14X2	1	4	390	659.97
3777-693	14X3	1	4	390	674.87
3777-694	14X4	1	4	390	713.75
3777-696	14X6	1	6	390	812.13
3777-698	14X8	1	4	390	893.48
3777-700	14X10	1	4	390	1057.42
3777-702	14X12	1	2	390	1247.77

**P503 Combination Wye and 1/8 Bend (Two Piece)**

**ALL HUB**



P503-030	3	10	180	051	26.57
P503-040	4	5	40	051	62.07
P503-060	6	4	28	051	192.62
P503-080	8	1	8	051	357.96
P503-100	10	1	4	052	1168.05
P503-120	12	1	4	052	1359.91

**P504 Combination Wye and 1/8 Bend, Reducing (Two Piece)**

**ALL HUB**



P504-422	4X3	5	90	051	47.88
P504-530	6X3	5	40	051	193.81
P504-532	6X4	5	35	051	179.11
P504-580*	8X3	2	16	051	195.87
P504-582	8X4	2	16	051	216.98
P504-585	8X6	1	8	051	386.75
P504-623*	10X3	1	12	052	387.54



**Drain, Waste & Vent (DWV) Product**  
**PVC DWV Drain Waste & Vent Fittings**

**PVC DWV Drain Waste & Vent Fittings**

Part Number	Size	Std Pk	Pklt Qty	Prod Code	MSRP
<b>P504 Combination Wye and 1/8 Bend, Reducing (Two Piece)</b>					
<i>(continued)</i>					
<b>ALL HUB</b>					
P504-624*	10X4	1	8	052	410.34
P504-626	10X6	1	8	052	516.00
P504-628	10X8	1	8	052	642.32
P504-664*	12X4	1	4	052	638.15
P504-666*	12X6	1	4	052	662.88
P504-668*	12X8	1	6	052	808.25
P504-670*	12X10	1	6	052	1197.62
* Bushed					



**P507 Double Combination Wye and 1/8 Bend**

**ALL HUB**

P507-015	1-1/2	10	350	051	22.56
P507-020	2	10	300	051	33.87
P507-030	3	10	80	051	65.68
P507-040	4	5	35	051	131.02
P507-251	2X2X1-1/2X1-1/2	20	360	051	29.97
P507-338	3X3X2X2	10	140	051	55.67
P507-420	4X4X2X2	5	70	051	106.17
P507-422	4X4X3X3	5	40	051	104.58
3792-060	6	1	6	390	228.88
3792-080	8	1	5	390	365.03
3792-100	10	1	1	390	651.93
3792-120	12	1	1	390	946.41
3792-140	14	1	2	390	1639.21
3792-528	6X2	1	24	390	163.93
3792-530	6X3	1	24	390	171.76
3792-532	6X4	1	8	390	178.33
3792-578	8X2	1	16	390	200.16
3792-580	8X3	1	8	390	249.39
3792-582	8X4	1	4	390	254.05
3792-585	8X6	1	5	390	287.87
3792-621	10X2	1	16	390	297.71
3792-623	10X3	1	8	390	311.81
3792-624	10X4	1	4	390	318.72
3792-626	10X6	1	4	390	400.98
3792-628	10X8	1	4	390	498.94
3792-661	12X2	1	4	390	482.45
3792-663	12X3	1	6	390	492.66
3792-664	12X4	1	12	390	503.75
3792-666	12X6	1	3	390	559.77
3792-668	12X8	1	3	390	628.01
3792-670	12X10	1	3	390	781.36
3792-691	14X2	1	4	390	657.85
3792-693	14X3	1	4	390	742.37
3792-694	14X4	1	4	390	785.12
3792-696	14X6	1	4	390	893.33
3792-698	14X8	1	4	390	982.85
3792-700	14X10	1	4	390	1163.18

Part Number	Size	Std Pk	Pklt Qty	Prod Code	MSRP
<b>P507 Double Combination Wye and 1/8 Bend (continued)</b>					
<b>ALL HUB</b>					
3792-702	14X12	1	4	390	1372.54

**P515 Combination Wye and 1/8 Bend with Left Side Inlet**

**ALL HUB**

P515-338	3X3X3X2	10	140	051	48.68
----------	---------	----	-----	-----	-------



**P516 Combination Wye and 1/8 Bend with Right Side Inlet**

**ALL HUB**

P516-338	3X3X3X2	10	140	051	48.68
----------	---------	----	-----	-----	-------



**P517 Combination Wye and 1/8 Bend with R&L Side Inlets**

**ALL HUB**

P517-338	3X3X3X2	10	80	051	54.67
----------	---------	----	----	-----	-------



**P600 Wye**

**ALL HUB**

P600-015	1-1/2	45	1350	051	5.77
P600-020	2	25	750	051	6.77
P600-030	3	8	240	051	17.46
P600-040	4	8	144	051	32.34
P600-060	6	4	48	051	100.12
P600-080	8	1	12	051	233.21
P600-100	10	1	6	052	549.53
P600-120	12	1	4	052	892.68
3775-140	14	1	4	390	1252.31



**P601 Wye, Reducing**

**ALL HUB**

P601-241	2X1-1/2X1-1/2	25	875	051	9.55
P601-251	2X2X1-1/2	25	875	051	8.34
P601-257	2X1-1/2X2	10	480	051	13.07
P601-337	3X3X1-1/2	15	450	051	11.66
P601-338	3X3X2	12	360	051	13.20
P601-419	4X4X1-1/2	10	180	051	35.74
P601-420	4X4X2	10	180	051	18.05
P601-422	4X4X3	10	140	051	25.71
P601-528 <sup>1</sup>	6X6X2	5	40	051	100.78
P601-530	6X6X3	6	48	051	97.26
P601-532	6X6X4	5	40	051	73.59
P601-578 <sup>1</sup>	8X8X2	3	24	051	197.00
3775-580	8X3	1	24	390	149.72
P601-582	8X8X4	2	28	051	181.12
P601-585	8X8X6	1	14	051	223.45



**Drain, Waste & Vent (DWV) Product**  
**PVC DWV Drain Waste & Vent Fittings**



**PVC DWV Drain Waste & Vent Fittings**

Part Number	Size	Std Pk	Pk Qty	Prod Code	MSRP
<b>P601 Wye, Reducing (continued)</b>					
<b>ALL HUB</b>					
3775-621	10X2	1	11	390	257.93
3775-623	10X3	1	11	390	270.15
P601-624 <sup>1</sup>	10X10X4	1	12	052	313.03
P601-626	10X10X6	1	12	052	406.04
3775-626	10X6	1	11	390	334.74
P601-628	10X10X8	1	10	052	480.48
3775-661	12X2	1	6	390	306.88
3775-663	12X3	1	6	390	318.69
3775-664	12X4	1	6	390	329.60
P601-664 <sup>1</sup>	12X12X4	1	6	052	484.81
P601-666 <sup>1</sup>	12X12X6	1	6	052	529.34
3775-666	12X6	1	6	390	392.76
P601-668 <sup>1</sup>	12X12X8	1	6	052	628.64
3775-668	12X8	1	8	390	436.39
P601-670 <sup>1</sup>	12X12X10	1	6	052	703.98
3775-691	14X2	1	4	390	623.03
3775-693	14X3	1	4	390	653.42
3775-694	14X4	1	6	390	664.37
3775-696	14X6	1	6	390	717.08
3775-698	14X8	1	6	390	820.60
3775-700	14X10	1	4	390	877.17
3775-702	14X12	1	4	390	1121.51
3775-756	16X6	1	4	390	842.61
3775-786	18X6	1	4	390	1275.57
3775-816	20X6	1	3	390	1460.01
3775-906	24X6	1	2	390	2000.99

<sup>1</sup> Sized with Bushing



**P602 Wye, Street**

**S x H x H**

P602-015	1-1/2	50	1500	051	9.15
P602-020	2	30	540	051	10.88
P602-030	3	10	180	051	23.18
P602-040	4	10	80	051	45.92



**P603 Wye, Street, Reducing**

**S x H x H**

P603-251	2X2X1-1/2	25	875	051	12.47
P603-420	4X4X2	10	180	051	50.62
P603-422	4X4X3	10	80	051	42.99



**P611 Double Wye**

**ALL HUB**

P611-015	1-1/2	40	720	051	13.06
P611-020	2	20	600	051	14.06

Part Number	Size	Std Pk	Pk Qty	Prod Code	MSRP
-------------	------	--------	--------	-----------	------

**P611 Double Wye (continued)**

**ALL HUB**

P611-030	3	15	120	051	36.26
P611-040	4	5	70	051	73.53
P611-060	6	2	16	051	144.52
3776-080	8	1	5	390	315.43
3776-100	10	1	4	390	462.65
3776-120	12	1	3	390	755.34
3776-140	14	1	3	390	1339.74



**P611S Double Wye, with 2" Side Inlet**

**ALL HUB**

P611S-030	3	10	140	051	142.46
-----------	---	----	-----	-----	--------



**P612 Double Wye, Reducing**

**ALL HUB**

P612-251	2X2X1-1/2X1-1/2	10	720	051	12.84
P612-337	3X3X1-1/2X1-1/2	10	300	051	25.64
P612-338	3X3X2X2	15	210	051	27.01
P612-420	4X4X2X2	5	150	051	44.09
P612-422	4X4X3X3	5	90	051	58.24
3776-528	6X2	1	24	390	120.18
3776-530	6X3	1	16	390	124.40
P612-532	6X6X4X4	5	35	051	147.08
3776-578	8X2	1	16	390	171.75
3776-580	8X3	1	12	390	183.49
3776-582	8X4	1	8	390	191.27
3776-585	8X6	1	4	390	241.52
3776-621	10X2	1	4	390	244.47
3776-623	10X3	1	8	390	255.43
3776-624	10X4	1	8	390	268.22
3776-626	10X6	1	4	390	331.82
3776-628	10X8	1	4	390	401.78
3776-661	12X2	1	4	390	330.93
3776-663	12X3	1	4	390	341.81
3776-664	12X4	1	4	390	349.46
3776-666	12X6	1	4	390	415.99
3776-668	12X8	1	4	390	530.98
3776-670	12X10	1	3	390	679.78
3776-691	14X2	1	3	390	638.44
3776-693	14X3	1	3	390	668.24
3776-694	14X4	1	3	390	696.34
3776-696	14X6	1	3	390	775.21
3776-698	14X8	1	3	390	898.36
3776-700	14X10	1	3	390	949.39
3776-702	14X12	1	3	390	1229.55
3776-756	16X6	1	3	390	939.37
3776-786	18X6	1	4	390	1377.53
3776-816	20X6	1	1	390	1617.54
3776-906	24X6	1	1	390	2190.53



Drain, Waste & Vent (DWV) Product  
**PVC DWV Drain Waste & Vent Fittings**

**PVC DWV Drain Waste & Vent Fittings**

Part Number	Size	Std Pk	Pilt Qty	Prod Code	MSRP
-------------	------	--------	----------	-----------	------

**P335 Trap Elbow (for use with Traps only)**

**H x S**



P335-030	3	30	540	051	15.99
P335-040	4	25	200	051	51.25

**P700 Return Bend**

**H x H**



P700-015	1-1/2	20	1440	051	5.78
P700-020	2	35	630	051	11.11
P700-030	3	8	240	051	30.86
P700-040	4	6	108	051	60.97
P700-060	6	2	36	051	134.35
P700-080	8	1	7	051	185.18

**P704P Tail Piece Adapter**

**S x SLIP w/Plastic Nut - Built-in Washer**



P704P-015	1-1/2	25	4200	051	3.94
-----------	-------	----	------	-----	------

**P704X Tail Piece Adapter**

**S x SLIP w/Chrome Nut & Washer**



P704X-015	1-1/2	25	4200	051	5.57
-----------	-------	----	------	-----	------

**P706X P-Trap**

**H x H**



P706X-015	1-1/2	25	875	051	7.24
P706X-020	2	25	450	051	9.53
P706X-030	3	10	80	051	33.12
P706X-040	4	4	72	051	75.54
P706X-060	6	2	14	051	232.46
P706X-080	8	1	7	051	452.33
P706X-100	10	1	3	052	1141.53
P706X-120	12	1	1	052	1556.05

**P707X P-Trap w/Cleanout**

**H x H**



P707X-015	1-1/2	10	720	051	11.97
-----------	-------	----	-----	-----	-------

Part Number	Size	Std Pk	Pilt Qty	Prod Code	MSRP
-------------	------	--------	----------	-----------	------

**P708P Adjustable P-Trap w/Plastic Nut**

**H x H**



P708P-015	1-1/2	25	875	051	9.27
P708P-020	2	25	450	051	20.15

**P711P L.A. Pattern P-Trap w/Plastic Nut**

**SLIP x H w/Plastic Nut & Washer**



P711P-169	1-1/4X1-1/2	25	750	051	15.79
P711P-015	1-1/2	25	750	051	15.79

**P711X L.A. Pattern P-Trap w/Chrome Nut**

**SLIP x H w/Chrome Nut & Washer**



P711X-015	1-1/2	25	900	051	18.46
-----------	-------	----	-----	-----	-------

**P800 Closet Flange**

**H**



P800-422	4X3	25	750	051	8.49
P800-040	4X4	30	540	051	9.67

**P800G Closet Flange w/Gussets**

**H**



P800G-040	4	30	540	051	41.95
-----------	---	----	-----	-----	-------

**P800KO Closet Flange with Knockout**

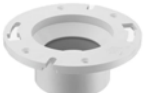
**H**



P800KO-422	4X3	25	750	051	9.89
------------	-----	----	-----	-----	------

**P800S Closet Flange with Stop**

**H**



P800S-422	4X3	25	750	051	8.49
-----------	-----	----	-----	-----	------

**P801 Closet Flange, Reducing**

**SPIGOT**



P801-422	4X3	25	750	051	10.34
----------	-----	----	-----	-----	-------

Drain, Waste & Vent (DWV) Product  
**PVC DWV Drain Waste & Vent Fittings**



**PVC DWV Drain Waste & Vent Fittings**

Part Number	Size	Std Pk	Pilt Qty	Prod Code	MSRP
-------------	------	--------	----------	-----------	------

**P811 Closet Flange w/Adjustable Metal Ring**

**H**



P811-040	4	30	540	051	23.55
P811-422	4X3	30	540	051	16.64

**P811KO Closet Flange w/Adjustable Metal Ring and Knockout**

**H**



P811KO-422	4X3	25	350	051	23.69
------------	-----	----	-----	-----	-------

**P812 Closet Flange w/Adjustable Metal Ring**

**SPIGOT**



P812-040	4	25	450	051	25.68
P812-422	4X3	25	450	051	22.31

**P813 Flush Closet Flange w/Adjustable Metal Ring**

**Fits Over 3" Pipe or Inside 4" Pipe**



P813-422	4X3	25	750	051	22.31
----------	-----	----	-----	-----	-------

**P815 Flush Closet Flange**

**Fits Over 3" Pipe or Inside 4" Pipe**



P815-040	4X4 / 4X3	25	750	051	16.36
----------	-----------	----	-----	-----	-------

**P815KO Flush Closet Flange with Knockout**

**Fits Over 3" Pipe or Inside 4" Pipe**



P815KO-040	4X4 / 4X3	25	750	051	15.82
------------	-----------	----	-----	-----	-------

**P820 Offset Closet Flange w/Adjustable Metal Ring**

**(1-1/2" Offset) H**



P820-422	4X3	15	450	051	29.41
----------	-----	----	-----	-----	-------

Uniform Plumbing Code does not accept offset closet flanges

**Floor Drain with Stainless Steel Adjustable Top w/Round Grate**



P1500-015S	1-1/2X5	4	216	054	398.67
P1600-015S	1-1/2X6	4	216	054	429.45

Part Number	Size	Std Pk	Pilt Qty	Prod Code	MSRP
-------------	------	--------	----------	-----------	------

**Floor Drain with Stainless Steel Adjustable Top w/Round Grate**

(continued)

P1700-015S	1-1/2X7	4	0	054	444.87
P1800-015S	1-1/2X8	4	216	054	572.19
P1500-020S	2X5	4	216	054	398.67
P1600-020S	2X6	4	400	054	429.45
P1700-020S	2X7	4	0	054	444.87
P1800-020S	2X8	4	0	054	572.19
P1500-030S	3X5	4	216	054	398.67
P1600-030S	3X6	4	400	054	429.45
P1700-030S	3X7	2	54	054	444.87
P1800-030S	3X8	4	216	054	572.19
P1500-040S	4X5	4	216	054	398.67
P1600-040S	4X6	4	1	054	429.45
P1700-040S	4X7	4	400	054	444.87
P1800-040S	4X8	4	144	054	572.19

**Floor Drain with Stainless Steel Adjustable Top w/Round Grate & Membrane Collar**



P150M-015S	1-1/2X5	4	216	054	428.92
P160M-015S	1-1/2X6	4	216	054	485.98
P170M-015S	1-1/2X7	4	0	054	500.72
P180M-015S	1-1/2X8	4	216	054	596.79
P150M-020S	2X5	1	175	054	428.92
P160M-020S	2X6	4	216	054	485.98
P170M-020S	2X7	4	0	054	500.72
P180M-020S	2X8	4	0	054	596.79
P150M-030S	3X5	4	216	054	428.92
P160M-030S	3X6	4	216	054	485.98
P170M-030S	3X7	2	54	054	500.72
P180M-030S	3X8	2	144	054	596.79
P150M-040S	4X5	4	216	054	428.92
P160M-040S	4X6	4	216	054	485.98
P170M-040S	4X7	4	192	054	500.72
P180M-040S	4X8	4	0	054	596.79

**Floor Cleanout w/Stainless Steel Adjustable Round Top & Solid Access Cover**



P1510-015S	1-1/2X5	4	216	054	445.15
P1510-020S	2X5	6	210	054	445.15
P1510-030S	3X5	4	400	054	445.15
P1510-040S	4X5	4	400	054	445.15

**Floor Cleanout w/Stainless Steel Adjustable Round Top, Solid Access Cover & Membrane Collar**



P151M-015S	1-1/2X5	4	216	054	468.87
P151M-020S	2X5	4	216	054	468.87
P151M-030S	3X5	4	216	054	468.87



**Drain, Waste & Vent (DWV) Product**  
**PVC DWV Drain Waste & Vent Fittings & Sewer Disconnect**

**PVC DWV Drain Waste & Vent Fittings**

Part Number	Size	Std Pk	Pilt Qty	Prod Code	MSRP
-------------	------	--------	----------	-----------	------

**Floor Cleanout w/Stainless Steel Adjustable Round Top, Solid Access Cover & Membrane Collar (continued)**

P151M-040S	4X5	4	54	054	468.87
------------	-----	---	----	-----	--------

**S119 Expansion Joint**

**Soc x Soc - PVC White with EPDM O-ring**

S119-15	1-1/2	16	768	025	16.58
S119-20	2	10	480	025	25.64
S119-25	2-1/2	5	120	025	37.20
S119-30	3	4	96	025	46.47
S119-40	4	2	70	025	81.33
S119-60	6	1	24	025	199.00

**826 Large Diameter Expansion Joint**

**Soc x Soc - PVC Gray with EPDM O-ring**

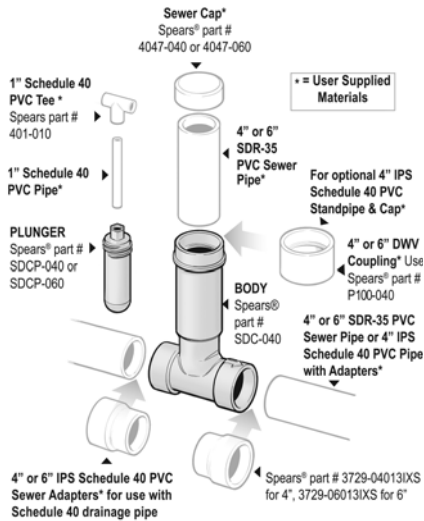
826-080X6	8	1	12	085	1498.29
826-100X6	10	1	12	085	1759.42
826-120X6	12	1	4	085	3117.49
826-140X6	14	1	4	085	3561.02

**Air Admittance Valve**

**Spigot**

Maximum 6 DFU (Drainage Fixture Units)

AAV-015	1-1/2	12	2016	285	56.68
---------	-------	----	------	-----	-------



**Sewer Disconnect**

**Sewer Disconnect Application**

Requires Purchase of SDC-040 Body and SDCP-040 Plunger, Sold Separately.



Screw-down Plunger installs in Body to provide temporary shut-off of Sewer line or to minimize sewage backup from sewer mains during flooding. Body accepts SDR-35 Sewer Pipe (or any ASTM D 3034 /D 2729 pipe), but can easily adapt to Schedule 40 drainage pipe using 4" IPS socket x Sewer spigot adapters, Spears® part no. 3729-04013IXS.

Standpipe to grade can be easily fabricated from user-supplied SDR-35 Sewer Pipe or optionally from Schedule 40 drainage pipe with the addition of a 4" Schedule 40 DWV socket Coupling, Spears® part no. P100-040. For Closure, a 4" Sewer Cap, Spears® part no. 4047-040; or 4" Schedule 40 DWV Cap, Spears® part no. P116-040 can be used as applicable.

A T-handle extension for easy Plunger operation can also be fabricated from user supplied 1" Schedule 40 pipe and a Tee fitting, Spears® part no. 401-010. See installation instructions included with product for additional detail.

**Sewer Disconnect Body**

Part Number	Size	Std Pk	Pilt Qty	Prod Code	MSRP
-------------	------	--------	----------	-----------	------

**Sewer Socket X Sewer Socket.**

Requires Purchase of SDCP-040 or SDCP-060 Plunger

SDC-040	4	6	108	055	80.51
SDC-060	6	2	28	055	122.57

**Sewer Disconnect Plunger**

Part Number	Size	Std Pk	Pilt Qty	Prod Code	MSRP
-------------	------	--------	----------	-----------	------

**For Use With Sewer Disconnect Body Purchased Separately.**

Requires Purchase of SDC-040 or SDC-060 Body

SDCP-040	4	12	420	055	27.73
SDCP-060	6	6	180	055	54.11

**Optional IPS x SEWER Adapter**

**IPS Socket x Sewer Spigot for adapting Sewer Disconnect Body to Schedule 40 drainage pipe**



3729-04013IXS	4	1	360	399	18.43
3729-06013IXS	6	1	120	399	38.89