



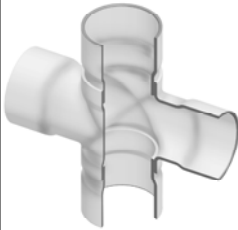
Drain, Waste & Vent (DWV) Product
PVC Schedule 40 & 80 DWV Fabricated Fittings

Crosses

	Size	SCH 40 DWV	SCH 80 DWV
		Prod Code: 390	Prod Code: 400
		Part Number MSRP	Part Number MSRP

CROSS (Socket x Socket x Socket x Socket) (continued)

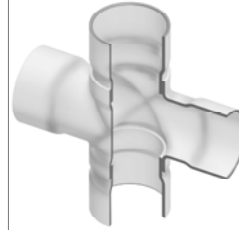
16X2	3720-751 808.65	3920-751 1276.15
16X3	3720-753 888.75	3920-753 1394.15
16X4	3720-754 922.71	3920-754 1476.26
16X6	3720-756 997.97	3920-756 1596.80
16X8	3720-758 1169.06	3920-758 1870.46
16X10	3720-760 1392.59	3920-760 2154.01
16X12	3720-762 1600.41	3920-762 2558.82
16X14	3720-764 1680.45	3920-764 3017.65
18	3720-180 2472.00	3920-180 3909.43
18X4	3720-784 1000.46	3920-784 1863.14
18X6	3720-786 1410.55	3920-786 2129.55
18X8	3720-788 1598.11	3920-788 2540.47
18X10	3720-790 1728.45	3920-790 2879.15
18X12	3720-792 1837.72	3920-792 3194.07
18X14	3720-794 1936.54	3920-794 3413.67
18X16	3720-796 2247.55	3920-796 3708.05
20	3720-200 4205.51	3920-200 6600.04
20X4	3720-814 1766.39	3920-814 2448.45
20X6	3720-816 1834.34	3920-816 2648.61
20X8	3720-818 2278.80	3920-818 2882.26
20X10	3720-820 2603.24	3920-820 3383.69
20X12	3720-822 2716.45	3920-822 3745.15
20X14	3720-824 2954.82	3920-824 4046.02
20X16	3720-826 3322.99	3920-826 4499.33
20X18	3720-828 3595.36	3920-828 5366.23
24	3720-240 5538.81	3920-240 8000.68



	Size	SCH 40 DWV	SCH 80 DWV
		Prod Code: 390	Prod Code: 400
		Part Number MSRP	Part Number MSRP

CROSS (Socket x Socket x Socket x Socket) (continued)

24X4	3720-904 2257.82	3920-904 2703.00
24X6	3720-906 2680.67	3920-906 3082.36
24X8	3720-908 2853.67	3920-908 4022.87
24X10	3720-910 3050.66	3920-910 4366.55
24X12	3720-912 3359.71	3920-912 5009.23
24X14	3720-914 3455.57	3920-914 5879.93
24X16	3720-916 3829.84	3920-916 6234.38
24X18	3720-918 4277.28	3920-918 6548.16
24X20	3720-920 5179.04	3920-920 6973.27



Wyes

WYE (Socket x Socket x Socket)

2	---	3975-020 175.21
3	---	3975-030 274.29
4	---	3975-040 318.57
6	---	3975-060 337.04
8	3775-080 232.42	3975-080 388.63
8X2	3775-578 151.63	3975-578 274.87
8X3	3775-580 157.60	3975-580 304.04
8X4	3775-582 164.12	3975-582 311.64
8X6	3775-585 215.39	3975-585 314.85
10	3775-100 464.34	3975-100 693.63
10X2	3775-621 271.51	3975-621 400.19
10X3	3775-623 284.37	3975-623 417.11
10X4	3775-624 292.23	3975-624 428.96
10X6	3775-626 352.36	3975-626 542.04
10X8	3775-628 431.86	3975-628 590.29
12	3775-120 612.54	3975-120 1049.45
12X2	3775-661 323.03	3975-661 673.09



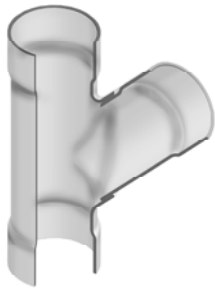
Drain, Waste & Vent (DWV) Product
PVC Schedule 40 & 80 DWV Fabricated Fittings



Wyes			
	Size	SCH 40 DWV	SCH 80 DWV
		Prod Code: 390	Prod Code: 400
		Part Number MSRP	Part Number MSRP

WYE (Socket x Socket x Socket) (continued)

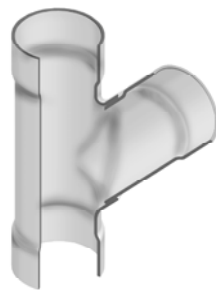
12X3	3775-663 335.46	3975-663 681.15
12X4	3775-664 346.95	3975-664 692.61
12X6	3775-666 413.43	3975-666 755.62
12X8	3775-668 459.36	3975-668 839.61
12X10	3775-670 539.80	3975-670 986.46
14	3775-140 1318.22	3975-140 1593.85
14X2	3775-691 655.82	3975-691 1077.43
14X3	3775-693 687.81	3975-693 1093.84
14X4	3775-694 699.34	3975-694 1102.64
14X6	3775-696 754.82	3975-696 1207.72
14X8	3775-698 863.79	3975-698 1338.05
14X10	3775-700 923.34	3975-700 1397.08
14X12	3775-702 1180.54	3975-702 1480.75
16	3775-160 1677.21	3975-160 2453.49
16X2	3775-751 745.19	3975-751 1249.77
16X3	3775-753 788.39	3975-753 1265.53
16X4	3775-754 824.14	3975-754 1318.56
16X6	3775-756 886.96	3975-756 1419.09
16X8	3775-758 1011.37	3975-758 1495.43
16X10	3775-760 1214.97	3975-760 1637.11
16X12	3775-762 1323.16	3975-762 2193.74
16X14	3775-764 1603.42	3975-764 2335.43
18	3775-180 1928.60	3975-180 3295.98
18X4	3775-784 1321.42	3975-784 1704.21
18X6	3775-786 1342.71	3975-786 1732.79
18X8	3775-788 1386.47	3975-788 1867.77



	Size	SCH 40 DWV	SCH 80 DWV
		Prod Code: 390	Prod Code: 400
		Part Number MSRP	Part Number MSRP

WYE (Socket x Socket x Socket) (continued)

18X10	3775-790 1475.01	3975-790 1921.97
18X12	3775-792 1615.41	3975-792 2115.74
18X14	3775-794 1766.07	3975-794 2569.82
18X16	3775-796 1872.38	3975-796 3098.27
20	3775-200 2842.26	3975-200 5620.86
20X4	3775-814 1531.28	3975-814 1987.77
20X6	3775-816 1536.85	3975-816 2150.32
20X8	3775-818 1649.86	3975-818 2672.97
20X10	3775-820 1707.41	3975-820 2782.07
20X12	3775-822 1927.40	3975-822 3062.64
20X14	3775-824 2241.77	3975-824 3549.20
20X16	3775-826 2462.11	3975-826 3645.22
20X18	3775-828 2660.88	3975-828 3810.27
24	3775-240 3536.68	3975-240 9657.73
24X4	3775-904 1909.19	3975-904 2830.79
24X6	3775-906 2106.31	3975-906 3109.33
24X8	3775-908 2232.12	3975-908 3599.63
24X10	3775-910 2399.65	3975-910 3649.29
24X12	3775-912 2476.28	3975-912 4002.47
24X14	3775-914 2594.94	3975-914 4220.82
24X16	3775-916 2742.25	3975-916 4841.00
24X18	3775-918 2933.98	3975-918 5684.22
24X20	3775-920 3311.35	3975-920 5869.41






Drain, Waste & Vent (DWV) Product
PVC Schedule 40 & 80 DWV Fabricated Fittings

Wyes

Size	SCH 40 DWV Prod Code: 390		SCH 80 DWV Prod Code: 400	
	Part Number MSRP		Part Number MSRP	

DOUBLE WYE (Socket x Socket x Socket x Socket)

	6	3776-060 172.16	3976-060 220.37
	6X4	3776-532 134.69	3976-532 204.68
	8	3776-080 332.03	3976-080 425.02
	8X2	3776-578 180.79	3976-578 243.06
	8X3	3776-580 193.15	3976-580 251.60
	8X4	3776-582 201.34	3976-582 286.41
	8X6	3776-585 254.23	3976-585 366.02
	10	3776-100 487.00	3976-100 779.22
	10X2	3776-621 257.34	3976-621 431.60
	10X3	3776-623 268.87	3976-623 442.52
	10X4	3776-624 282.34	3976-624 451.73
	10X6	3776-626 349.28	3976-626 558.83
	10X8	3776-628 422.93	3976-628 675.15
	12	3776-120 795.09	3976-120 1275.07
	12X2	3776-661 348.35	3976-661 711.74
	12X3	3776-663 359.80	3976-663 718.01
	12X4	3776-664 367.85	3976-664 724.17
	12X6	3776-666 437.88	3976-666 852.03
	12X8	3776-668 558.93	3976-668 1035.06
	12X10	3776-670 715.56	3976-670 1168.83
14	3776-140 1410.25	3976-140 1771.06	
14X2	3776-691 672.04	3976-691 1260.24	
14X3	3776-693 703.41	3976-693 1297.41	
14X4	3776-694 732.99	3976-694 1308.57	
14X6	3776-696 816.01	3976-696 1338.05	
14X8	3776-698 945.64	3976-698 1416.77	

Size	SCH 40 DWV Prod Code: 390	SCH 80 DWV Prod Code: 400
	Part Number MSRP	Part Number MSRP

DOUBLE WYE (Socket x Socket x Socket x Socket) (continued)

	14X10	3776-700 999.36	3976-700 1495.43
	14X12	3776-702 1294.26	3976-702 1684.38
	16	3776-160 1850.93	3976-160 2752.60
	16X2	3776-751 869.09	3976-751 1478.60
	16X3	3776-753 921.05	3976-753 1491.01
	16X4	3776-754 934.68	3976-754 1495.43
	16X6	3776-756 988.81	3976-756 1582.03
	16X8	3776-758 1082.24	3976-758 1731.57
	16X10	3776-760 1325.53	3976-760 1975.57
	16X12	3776-762 1428.56	3976-762 2125.14
	16X14	3776-764 1710.78	3976-764 2527.38
	18	3776-180 2585.65	3976-180 3635.04
	18X4	3776-784 1427.02	3976-784 1914.38
	18X6	3776-786 1450.03	3976-786 2219.75
	18X8	3776-788 1555.15	3976-788 2277.45
	18X10	3776-790 1893.43	3976-790 2297.48
	18X12	3776-792 1928.73	3976-792 2468.52
	18X14	3776-794 2071.00	3976-794 2808.13
	18X16	3776-796 2125.47	3976-796 3282.32
	20	3776-200 3362.01	3976-200 5870.36
20X4	3776-814 1618.58	3976-814 2356.12	
20X6	3776-816 1702.67	3976-816 2505.67	
20X8	3776-818 1730.87	3976-818 2710.18	
20X10	3776-820 2279.38	3976-820 3108.91	
20X12	3776-822 2495.17	3976-822 3449.89	
20X14	3776-824 2725.03	3976-824 3622.08	
20X16	3776-826 2973.59	3976-826 4606.31	

Drain, Waste & Vent (DWV) Product
PVC Schedule 40 & 80 DWV Fabricated Fittings



	Size	Wyes	
		SCH 40 DWV Prod Code: 390	SCH 80 DWV Prod Code: 400
		Part Number MSRP	Part Number MSRP

DOUBLE WYE (Socket x Socket x Socket x Socket) (continued)

	20X18	3776-828 3252.17	3976-828 4898.26
	24	3776-240 4186.03	3976-240 7576.58
	24X4	3776-904 2085.48	3976-904 3062.64
	24X6	3776-906 2305.82	3976-906 3360.23
	24X8	3776-908 2365.95	3976-908 3678.46
	24X10	3776-910 2489.24	3976-910 3866.19
	24X12	3776-912 2635.22	3976-912 3965.24
	24X14	3776-914 2800.24	3976-914 5338.08
	24X16	3776-916 3046.45	3976-916 6668.45
	24X18	3776-918 3076.76	3976-918 6761.94
	24X20	3776-920 3954.16	3976-920 7129.52

COMBO WYE (Socket x Socket x Socket)

	6	3777-060 219.02	3977-060 521.40
	6X4	3777-532 170.64	3977-532 307.95
	8	3777-080 349.28	3977-080 577.55
	8X2	3777-578 191.53	3977-578 380.06
	8X3	3777-580 238.66	3977-580 389.38
	8X4	3777-582 243.12	3977-582 397.86
	8X6	3777-585 275.49	3977-585 440.75
	10	3777-100 623.85	3977-100 1101.92
	10X2	3777-621 284.91	3977-621 461.80
	10X3	3777-623 298.40	3977-623 479.31
	10X4	3777-624 305.00	3977-624 488.01
	10X6	3777-626 383.71	3977-626 613.94
	10X8	3777-628 477.44	3977-628 802.82
	12	3777-120 905.65	3977-120 1383.25
	12X2	3777-661 461.69	3977-661 754.08

Size	SCH 40 DWV Prod Code: 390	SCH 80 DWV Prod Code: 400
	Part Number MSRP	Part Number MSRP

COMBO WYE (Socket x Socket x Socket) (continued)

	12X3	3777-663 471.44	3977-663 766.54
	12X4	3777-664 482.06	3977-664 771.37
	12X6	3777-666 535.65	3977-666 861.91
	12X8	3777-668 600.96	3977-668 1023.24
	12X10	3777-670 747.71	3977-670 1196.41
	14	3777-140 1568.69	3977-140 2115.33
	14X2	3777-691 694.71	3977-691 1162.09
	14X3	3777-693 710.39	3977-693 1175.49
	14X4	3777-694 751.32	3977-694 1201.99
	14X6	3777-696 854.87	3977-696 1367.82
	14X8	3777-698 940.51	3977-698 1431.51
	14X10	3777-700 1113.07	3977-700 1628.31
	14X12	3777-702 1313.44	3977-702 1977.57
	16	3777-160 1842.03	3977-160 2947.29
	16X2	3777-751 902.96	3977-751 1468.55
	16X3	3777-753 919.67	3977-753 1490.94
	16X4	3777-754 941.60	3977-754 1506.47
	16X6	3777-756 995.88	3977-756 1593.44
	16X8	3777-758 1095.64	3977-758 1810.33
	16X10	3777-760 1239.63	3977-760 1983.44
	16X12	3777-762 1330.73	3977-762 2129.03
	16X14	3777-764 1633.64	3977-764 2563.28
	18	3777-180 2319.64	3977-180 4024.36
	18X4	3777-784 1414.24	3977-784 1785.34
	18X6	3777-786 1458.29	3977-786 1893.92
	18X8	3777-788 1497.63	3977-788 2087.00
	18X10	3777-790 1594.19	3977-790 2244.64



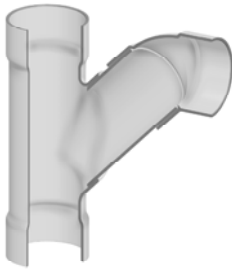
Drain, Waste & Vent (DWV) Product
PVC Schedule 40 & 80 DWV Fabricated Fittings

Wyes

Size	SCH 40 DWV Prod Code: 390	SCH 80 DWV Prod Code: 400
	Part Number MSRP	Part Number MSRP

COMBO WYE (Socket x Socket x Socket) (continued)

18X12	3777-792 1657.03	3977-792 2961.86
18X14	3777-794 1881.45	3977-794 3388.68
18X16	3777-796 2140.02	3977-796 3643.61
20	3777-200 3005.77	3977-200 7414.83
20X4	3777-814 1563.66	3977-814 1975.27
20X6	3777-816 1693.39	3977-816 2187.45
20X8	3777-818 1725.48	3977-818 2724.79
20X10	3777-820 1808.88	3977-820 3045.84
20X12	3777-822 2273.56	3977-822 3597.81
20X14	3777-824 2393.43	3977-824 3965.38
20X16	3777-826 2677.99	3977-826 5049.93
20X18	3777-828 2736.63	3977-828 6905.01
24	3777-240 4060.23	3977-240 7896.33
24X4	3777-904 2084.59	3977-904 3197.55
24X6	3777-906 2276.29	3977-906 3402.20
24X8	3777-908 2539.25	3977-908 3547.39
24X10	3777-910 2718.55	3977-910 4192.87
24X12	3777-912 2831.64	3977-912 4513.12
24X14	3777-914 2883.82	3977-914 5383.94
24X16	3777-916 3334.74	3977-916 6285.61
24X18	3777-918 3562.41	3977-918 7125.38
24X20	3777-920 3619.20	3977-920 7562.80



Sanitary Tees

Size	SCH 40 DWV Prod Code: 390	SCH 80 DWV Prod Code: 400
	Part Number MSRP	Part Number MSRP

SANITARY TEE (Socket x Socket x Socket)

2	---	3990-020 203.25
3	---	3990-030 207.77
4	---	3990-040 209.76
6	3790-060 188.34	3990-060 316.75
6X4	3790-532 141.09	3990-532 250.36
8	3790-080 345.08	3990-080 573.48
8X2	3790-578 176.54	3990-578 313.69
8X3	3790-580 233.27	3990-580 357.29
8X4	3790-582 221.36	3990-582 380.94
8X6	3790-585 265.18	3990-585 424.19
10	3790-100 616.97	3990-100 1089.25
10X2	3790-621 270.91	3990-621 422.26
10X3	3790-623 275.49	3990-623 434.27
10X4	3790-624 295.17	3990-624 472.26
10X6	3790-626 379.87	3990-626 598.19
10X8	3790-628 465.13	3990-628 770.51
12	3790-120 883.46	3990-120 1344.73
12X2	3790-661 454.59	3990-661 713.84
12X3	3790-663 459.78	3990-663 725.54
12X4	3790-664 473.22	3990-664 755.62
12X6	3790-666 515.97	3990-666 846.14
12X8	3790-668 574.47	3990-668 1005.04
12X10	3790-670 723.63	3990-670 1164.36
14	3790-140 1555.93	3990-140 2061.46
14X2	3790-691 616.47	3990-691 1125.75
14X3	3790-693 668.93	3990-693 1142.75

