

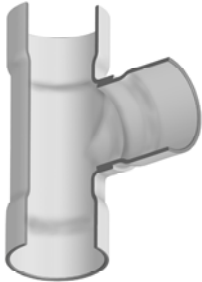
**Drain, Waste & Vent (DWV) Product**  
**PVC Schedule 40 & 80 DWV Fabricated Fittings**



<b>Tees</b>			
	<b>Size</b>	SCH 40 DWV	SCH 80 DWV
		Prod Code: 390	Prod Code: 400
		Part Number MSRP	Part Number MSRP

**TEE (Socket x Socket x Socket)**

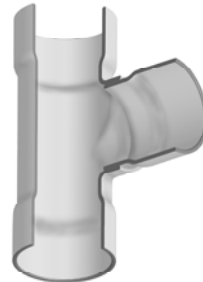
	6	3701-060 122.67	3901-060 283.66
	6X2	3701-528 106.01	3901-528 158.96
	6X3	3701-530 111.35	3901-530 166.44
	6X4	3701-532 116.46	3901-532 172.80
	8	3701-080 199.83	3901-080 338.64
	8X2	3701-578 124.64	3901-578 222.64
	8X3	3701-580 130.71	3901-580 250.85
	8X4	3701-582 134.26	3901-582 256.44
	8X6	3701-585 145.68	3901-585 266.24
	10	3701-100 388.66	3901-100 528.19
	10X2	3701-621 202.91	3901-621 314.14
	10X3	3701-623 206.66	3901-623 342.15
	10X4	3701-624 211.72	3901-624 387.06
	10X6	3701-626 258.79	3901-626 472.97
	10X8	3701-628 346.94	3901-628 495.63
	12	3701-120 516.54	3901-120 743.11
	12X2	3701-661 270.89	3901-661 389.03
	12X3	3701-663 274.89	3901-663 453.38
	12X4	3701-664 281.81	3901-664 515.09
	12X6	3701-666 327.32	3901-666 599.29
	12X8	3701-668 390.96	3901-668 659.83
	12X10	3701-670 445.51	3901-670 668.47
	14	3701-140 1015.36	3901-140 1307.02
	14X2	3701-691 429.61	3901-691 688.89
	14X3	3701-693 475.49	3901-693 770.74
	14X4	3701-694 530.12	3901-694 848.25



	<b>Size</b>	SCH 40 DWV	SCH 80 DWV
		Prod Code: 390	Prod Code: 400
		Part Number MSRP	Part Number MSRP

**TEE (Socket x Socket x Socket) (continued)**

	14X6	3701-696 622.14	3901-696 995.44
	14X8	3701-698 741.76	3901-698 1192.64
	14X10	3701-700 843.17	3901-700 1254.65
	14X12	3701-702 997.45	3901-702 1266.83
	16	3701-160 1437.26	3901-160 2059.07
	16X2	3701-751 612.61	3901-751 883.20
	16X3	3701-753 619.33	3901-753 976.91
	16X4	3701-754 657.43	3901-754 1051.82
	16X6	3701-756 711.14	3901-756 1137.73
	16X8	3701-758 832.51	3901-758 1332.75
	16X10	3701-760 1046.48	3901-760 1492.16
	16X12	3701-762 1188.29	3901-762 1891.66
	16X14	3701-764 1410.24	3901-764 1956.08
	18	3701-180 1786.15	3901-180 2223.06
	18X4	3701-784 1049.89	3901-784 1220.73
	18X6	3701-786 1066.52	3901-786 1381.35
	18X8	3701-788 1110.28	3901-788 1433.06
	18X10	3701-790 1251.41	3901-790 1448.13
	18X12	3701-792 1333.15	3901-792 1780.19
	18X14	3701-794 1429.91	3901-794 2047.15
	18X16	3701-796 1534.77	3901-796 2091.83
	20	3701-200 2378.61	3901-200 3199.09
	20X4	3701-814 1268.88	3901-814 1694.83
	20X6	3701-816 1342.68	3901-816 1911.32
	20X8	3701-818 1418.78	3901-818 2347.32
	20X10	3701-820 1522.60	3901-820 2425.12
	20X12	3701-822 1612.23	3901-822 2561.62



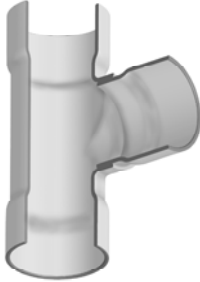


**Drain, Waste & Vent (DWV) Product**  
**PVC Schedule 40 & 80 DWV Fabricated Fittings**

**Tees**

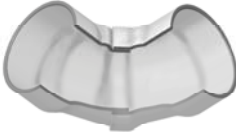
Size	SCH 40 DWV Prod Code: 390		SCH 80 DWV Prod Code: 400	
	Part Number		Part Number	
	MSRP		MSRP	

**TEE (Socket x Socket x Socket) (continued)**

	20X14	3701-824 1739.82	3901-824 2786.23
	20X16	3701-826 1852.64	3901-826 2837.05
	20X18	3701-828 2043.53	3901-828 3067.34
	24	3701-240 2963.36	3901-240 3837.12
	24X4	3701-904 1747.23	3901-904 2101.12
	24X6	3701-906 1836.58	3901-906 2369.57
	24X8	3701-908 1948.46	3901-908 2563.28
	24X10	3701-910 2058.48	3901-910 2789.14
	24X12	3701-912 2169.13	3901-912 2934.89
	24X14	3701-914 2317.67	3901-914 3254.19
	24X16	3701-916 2451.48	3901-916 3357.94
	24X18	3701-918 2663.35	3901-918 3521.75
	24X20	3701-920 2859.46	3901-920 3683.79

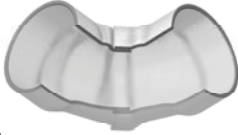
**90° Ells**

**90° ELBOW (Socket x Socket)**


	1-1/2	---	3906-015 85.72
	2	---	3906-020 95.77
	2-1/2	---	3906-025 113.17
	3	---	3906-030 133.65
	4	---	3906-040 151.21
	6	3706-060 121.11	3906-060 156.78
	8	3706-080 168.24	3906-080 263.32
	10	3706-100 265.95	3906-100 519.80
	12	3706-120 409.09	3906-120 758.01
	14	3706-140 547.88	3906-140 1115.25
	16	3706-160 812.49	3906-160 1387.04

Size	SCH 40 DWV Prod Code: 390		SCH 80 DWV Prod Code: 400	
	Part Number MSRP		Part Number MSRP	

**90° ELBOW (Socket x Socket) (continued)**

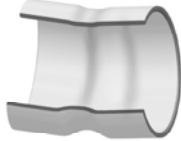
	18	3706-180 1208.41	3906-180 1785.61
	20	3706-200 1359.17	3906-200 2105.29
	24	3706-240 1699.69	3906-240 3150.13

**90° Elbow-Long sweep (Socket x Socket)**

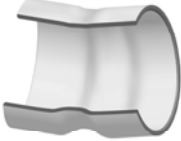
	2-1/2	3706-025LSF 52.71	---
	3	3706-030LSF 83.14	3906-030LSF 98.33
	4	3706-040LSF 123.82	3906-040LSF 146.77
	6	3706-060LSF 158.99	3906-060LSF 277.26
	8	3706-080LSF 316.54	3906-080LSF 409.29
	10	3706-100LSF 452.04	3906-100LSF 843.78

**Non 90° Ells**

**11-1/4° ELBOW (Socket x Socket)**

	4	3711-040 43.29	3911-040 58.87
	6	3711-060 69.55	3911-060 110.06
	8	3711-080 117.57	3911-080 180.16
	10	3711-100 177.41	3911-100 319.29
	12	3711-120 280.65	3911-120 466.66
	14	3711-140 441.23	3911-140 714.41
	16	3711-160 601.47	3911-160 954.97
	18	3711-180 673.15	3911-180 1232.81
	20	3711-200 892.89	3911-200 1580.43
	24	3711-240 1596.33	3911-240 1809.01

**15° ELBOW (Socket x Socket)**

	4	3718-040 43.29	3918-040 58.87
	6	3718-060 69.55	3918-060 110.06
	8	3718-080 117.57	3918-080 180.16
	10	3718-100 177.41	3918-100 319.29
	12	3718-120 280.65	3918-120 466.66