

Drain, Waste & Vent (DWV) Product
PVC Schedule 40 & 80 DWV Fabricated Fittings



Adapters

Size	SCH 40 DWV Prod Code: 399	SCH 80 DWV Prod Code: 400
	Part Number MSRP	Part Number MSRP

IPS x SEWER ADAPTER (Socket x Socket) (continued)

	10	3729-100IXS 142.93	---
	12	3729-120IXS 211.54	---

IPS x SEWER ADAPTER (Spigot x Socket)

	4	3729-04031IXS 22.98	---
	6	3729-06031IXS 53.21	---
	8	3729-08031IXS 87.15	---
	10	3729-10031IXS 135.67	---
	12	3729-12031IXS 201.51	---

Caps

Size	SCH 40 DWV Prod Code: 390	SCH 80 DWV Prod Code: 400
	Part Number MSRP	Part Number MSRP

CAP (Socket)

	4	3747-040 37.78	3947-040 45.86
	6	3747-060 47.16	3947-060 115.93
	8	3747-080 81.95	3947-080 149.48
	10	3747-100 116.99	3947-100 228.44
	12	3747-120 147.74	3947-120 395.49
	14	3747-140 251.21	3947-140 448.54
	16	3747-160 321.58	3947-160 592.00
	18	3747-180 355.83	3947-180 777.78
	20	3747-200 626.78	3947-200 898.79
	24	3747-240 926.49	3947-240 1042.91

Plugs

SPIGOT PLUG (Spigot)

	6	3749-060 45.22	3949-060 136.77
	8	3749-080 115.51	3949-080 230.84
	10	3749-100 131.73	3949-100 291.85

Size	SCH 40 DWV Prod Code: 390	SCH 80 DWV Prod Code: 400
	Part Number MSRP	Part Number MSRP

SPIGOT PLUG (Spigot) (continued)

	12	3749-120 188.81	3949-120 464.69
	14	3749-140 320.34	3949-140 632.53
	16	3749-160 390.34	3949-160 675.96

Cleanouts

Cleanout Adapter W/Plug (Spigot x Cleanout)

SOLD AS SET ONLY (Non-Pressure Rated)

	2	---	3978-020 96.63
	3	---	3978-030 123.80
	4	---	3978-040 155.58
	5	---	3978-050 165.38
	6	---	3978-060 175.20
	8	---	3978-080 278.69
	10	---	3978-100* 465.43
	12	---	3978-120* 649.82
	14	---	3978-140* 805.83
	16	---	3978-160 1584.95
	18	---	3978-180 1897.85
	20	---	3978-200 2007.68
	24	---	3978-240 2332.21

Cleanouts Have HDPE Plug

Glue-On Saddles

Part Number	Size	Std Pk	Mstr Ctn	Prod Code	MSRP
-------------	------	--------	----------	-----------	------

Saddle

IPS O.D.x Socket Schedule 40



Non Pressure Rated

3763-528	6X2	1	10	390	35.83
3763-530	6X3	1	10	390	36.68
3763-532	6X4	1	8	390	38.15
3763-578	8X2	1	10	390	52.81
3763-580	8X3	1	10	390	53.33
3763-582	8X4	1	10	390	53.98
3763-585	8X6	1	10	390	55.51



Drain, Waste & Vent (DWV) Product
PVC Schedule 40 & 80 DWV Fabricated Fittings

Glue-On Saddles

Part Number	Size	Std Pk	Mstr Ctn	Prod Code	MSRP
Saddle (continued)					
IPS O.D.x Socket Schedule 40					
3763-621	10X2	1	5	390	66.74
3763-623	10X3	1	10	390	67.67
3763-624	10X4	1	8	390	67.95
3763-626	10X6	1	5	390	79.52
3763-628	10X8	1	5	390	127.61
3763-661	12X2	1	5	390	78.93
3763-663	12X3	1	10	390	80.39
3763-664	12X4	1	10	390	82.11
3763-666	12X6	1	4	390	95.22
3763-668	12X8	1	5	390	151.80
3763-670	12X10	1	4	390	219.51
3763-691	14X2	1	10	390	101.16
3763-693	14X3	1	8	390	108.11
3763-694	14X4	1	5	390	115.48
3763-696	14X6	1	8	390	117.80
3763-698	14X8	1	4	390	180.77
3763-700	14X10	1	3	390	232.54
3763-702	14X12	1	0	390	256.32
3763-751	16X2	1	10	390	107.66
3763-753	16X3	1	5	390	109.14
3763-754	16X4	1	10	390	118.80
3763-756	16X6	1	3	390	126.94
3763-758	16X8	1	3	390	188.67
3763-760	16X10	1	0	390	239.80
3763-762	16X12	1	0	390	265.75
3763-764	16X14	1	0	390	276.25
3763-781	18X2	1	10	390	157.82
3763-783	18X3	1	5	390	160.89
3763-784	18X4	1	5	390	163.35
3763-786	18X6	1	4	390	173.93
3763-788	18X8	1	0	390	253.79
3763-790	18X10	1	0	390	281.34
3763-792	18X12	1	0	390	289.11
3763-794	18X14	1	0	390	436.77
3763-796	18X16	1	0	390	570.18
3763-811	20X2	1	12	390	158.19
3763-813	20X3	1	5	390	160.36
3763-814	20X4	1	6	390	168.19
3763-816	20X6	1	0	390	175.66
3763-818	20X8	1	5	390	253.46
3763-820	20X10	1	0	390	281.35
3763-822	20X12	1	0	390	401.12
3763-824	20X14	1	0	390	437.67
3763-826	20X16	1	0	390	572.27
3763-828	20X18	1	0	390	648.56
3763-901	24X2	1	5	390	150.91
3763-903	24X3	1	5	390	166.80
3763-904	24X4	1	5	390	168.65
3763-906	24X6	1	5	390	178.92
3763-908	24X8	1	5	390	255.81
3763-910	24X10	1	0	390	284.56

Part Number	Size	Std Pk	Mstr Ctn	Prod Code	MSRP
-------------	------	--------	----------	-----------	------

Saddle (continued)

IPS O.D.x Socket Schedule 40

3763-912	24X12	1	0	390	402.54
3763-914	24X14	1	0	390	450.77
3763-916	24X16	1	0	390	506.61
3763-918	24X18	1	0	390	682.74
3763-920	24X20	1	0	390	764.43

Saddle



IPS O.D. x Socket Schedule 80

Non Pressure Rated

3963-528	6X2	1	6	400	60.22
3963-530	6X3	1	10	400	60.76
3963-532	6X4	1	8	400	61.28
3963-578	8X2	1	10	400	85.07
3963-580	8X3	1	8	400	86.11
3963-582	8X4	1	5	400	87.03
3963-585	8X6	1	5	400	89.06
3963-621	10X2	1	8	400	78.77
3963-623	10X3	1	5	400	79.88
3963-624	10X4	1	8	400	80.22
3963-626	10X6	1	5	400	93.28
3963-628	10X8	1	5	400	149.49
3963-661	12X2	1	10	400	93.06
3963-663	12X3	1	8	400	93.61
3963-664	12X4	1	10	400	94.40
3963-666	12X6	1	5	400	109.48
3963-668	12X8	1	2	400	172.28
3963-670	12X10	1	4	400	210.86
3963-691	14X2	1	10	400	114.61
3963-693	14X3	1	8	400	115.68
3963-694	14X4	1	5	400	116.24
3963-696	14X6	1	8	400	132.32
3963-698	14X8	1	4	400	202.85
3963-700	14X10	1	3	400	259.77
3963-702	14X12	1	4	400	286.83
3963-751	16X2	1	10	400	120.69
3963-753	16X3	1	8	400	121.74
3963-754	16X4	1	10	400	122.43
3963-756	16X6	1	8	400	139.54
3963-758	16X8	1	3	400	208.08
3963-760	16X10	1	0	400	264.96
3963-762	16X12	1	0	400	294.28
3963-764	16X14	1	0	400	306.66
3963-781	18X2	1	10	400	177.31
3963-783	18X3	1	4	400	178.38
3963-784	18X4	1	5	400	179.19
3963-786	18X6	1	5	400	189.65
3963-788	18X8	1	5	400	278.65
3963-790	18X10	1	0	400	308.91
3963-792	18X12	1	0	400	440.55
3963-794	18X14	1	0	400	479.48
3963-796	18X16	1	0	400	627.41
3963-811	20X2	1	12	400	179.33

Drain, Waste & Vent (DWV) Product
PVC Schedule 40 & 80 DWV Fabricated Fittings



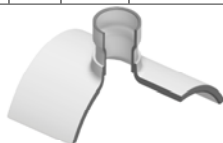
Glue-On Saddles

Part Number	Size	Std Pk	Mstr Ctn	Prod Code	MSRP
-------------	------	--------	----------	-----------	------

Saddle (continued)

IPS O.D. x Socket Schedule 80

3963-813	20X3	1	4	400	179.75
3963-814	20X4	1	6	400	181.91
3963-816	20X6	1	0	400	190.82
3963-818	20X8	1	5	400	275.64
3963-820	20X10	1	0	400	305.68
3963-822	20X12	1	0	400	436.02
3963-824	20X14	1	0	400	475.54
3963-826	20X16	1	0	400	623.04
3963-828	20X18	1	0	400	707.43
3963-901	24X2	1	5	400	182.47
3963-903	24X3	1	5	400	183.44
3963-904	24X4	1	5	400	184.28
3963-906	24X6	1	5	400	192.29
3963-908	24X8	1	5	409	273.18
3963-910	24X10	1	5	400	307.00
3963-912	24X12	1	0	409	428.69
3963-914	24X14	1	0	400	473.88
3963-916	24X16	1	0	400	648.61
3963-918	24X18	1	0	400	731.41
3963-920	24X20	1	0	400	823.20



Stub Saddle

IPS O.D. x Socket Schedule 40

Non Pressure Rated

3765-528	6X2	1	8	390	38.53
3765-530	6X3	1	4	390	39.44
3765-532	6X4	1	10	390	41.03
3765-578	8X2	1	10	390	56.79
3765-580	8X3	1	4	390	57.34
3765-582	8X4	1	8	390	58.04
3765-585	8X6	1	4	390	59.69
3765-621	10X2	1	5	390	71.75
3765-623	10X3	1	5	390	72.77
3765-624	10X4	1	4	390	92.22
3765-626	10X6	1	2	390	85.51
3765-628	10X8	1	2	390	137.21
3765-661	12X2	1	6	390	84.86
3765-663	12X3	1	5	390	86.44
3765-664	12X4	1	2	390	88.28
3765-666	12X6	1	2	390	102.32
3765-668	12X8	1	2	390	163.23
3765-670	12X10	1	2	390	236.03
3765-691	14X2	1	10	390	108.77
3765-693	14X3	1	2	390	110.00
3765-694	14X4	1	5	390	111.38
3765-696	14X6	1	3	390	126.67
3765-698	14X8	1	0	390	193.11
3765-700	14X10	1	0	390	250.04
3765-702	14X12	1	0	390	275.62

Part Number	Size	Std Pk	Mstr Ctn	Prod Code	MSRP
-------------	------	--------	----------	-----------	------

Stub Saddle (continued)

IPS O.D. x Socket Schedule 40

3765-751	16X2	1	4	390	115.76
3765-753	16X3	1	5	390	117.35
3765-754	16X4	1	5	390	119.13
3765-756	16X6	1	2	390	136.48
3765-758	16X8	1	0	390	202.87
3765-760	16X10	1	0	390	257.85
3765-762	16X12	1	0	390	285.75
3765-764	16X14	1	0	390	297.04
3765-781	18X2	1	4	390	169.68
3765-783	18X3	1	10	390	133.45
3765-784	18X4	1	10	390	175.64
3765-786	18X6	1	2	390	187.02
3765-788	18X8	1	0	390	272.88
3765-790	18X10	1	0	390	302.51
3765-792	18X12	1	0	390	310.86
3765-794	18X14	1	0	390	469.63
3765-796	18X16	1	0	390	612.58
3765-811	20X2	1	0	390	170.09
3765-813	20X3	1	2	390	172.43
3765-814	20X4	1	2	390	180.85
3765-816	20X6	1	0	390	188.89
3765-818	20X8	1	0	390	272.54
3765-820	20X10	1	0	390	302.52
3765-822	20X12	1	0	390	431.33
3765-824	20X14	1	0	390	470.62
3765-826	20X16	1	0	390	615.34
3765-828	20X18	1	0	390	697.38
3765-901	24X2	1	4	390	162.25
3765-903	24X3	1	2	390	179.34
3765-904	24X4	1	4	390	181.35
3765-906	24X6	1	3	390	192.39
3765-908	24X8	1	0	390	275.06
3765-910	24X10	1	0	390	305.96
3765-912	24X12	1	0	390	432.83
3765-914	24X14	1	0	390	484.71
3765-916	24X16	1	0	390	544.75
3765-918	24X18	1	0	390	734.11
3765-920	24X20	1	0	390	821.97

Stub Saddle

IPS O.D. x Socket Schedule 80

Non Pressure Rated

3965-528	6X2	1	8	400	64.76
3965-530	6X3	1	3	400	65.32
3965-532	6X4	1	10	400	65.91
3965-578	8X2	1	5	409	90.52
3965-580	8X3	1	4	400	92.59
3965-582	8X4	1	6	400	93.58
3965-585	8X6	1	4	400	95.77
3965-621	10X2	1	6	400	84.71
3965-623	10X3	1	6	409	85.00
3965-624	10X4	1	4	400	86.26





Drain, Waste & Vent (DWV) Product
PVC Schedule 40 & 80 DWV Fabricated Fittings

Glue-On Saddles

Part Number	Size	Std Pk	Mstr Ctn	Prod Code	MSRP
-------------	------	--------	----------	-----------	------

Stub Saddle (continued)

IPS O.D.x Socket Schedule 80

3965-626	10X6	1	4	400	100.29
3965-628	10X8	1	2	400	160.74
3965-661	12X2	1	4	400	100.06
3965-663	12X3	1	4	400	101.13
3965-664	12X4	1	2	400	101.51
3965-666	12X6	1	2	400	117.73
3965-668	12X8	1	2	400	185.25
3965-670	12X10	1	2	400	271.75
3965-691	14X2	1	6	400	123.25
3965-693	14X3	1	4	400	124.40
3965-694	14X4	1	5	400	124.98
3965-696	14X6	1	2	400	142.27
3965-700	14X10	1	0	400	279.33
3965-702	14X12	1	0	400	308.41
3965-751	16X2	1	5	400	129.77
3965-753	16X3	1	4	400	130.89
3965-754	16X4	1	3	400	131.63
3965-756	16X6	1	2	400	150.03
3965-758	16X8	1	3	400	223.75
3965-760	16X10	1	3	400	284.92
3965-762	16X12	1	0	400	316.43
3965-764	16X14	1	0	400	329.76
3965-781	18X2	1	2	400	190.64
3965-783	18X3	1	0	400	191.80
3965-784	18X4	1	0	400	192.67
3965-786	18X6	1	2	400	203.93
3965-788	18X8	1	0	400	299.62
3965-790	18X10	1	0	400	332.16
3965-792	18X12	1	0	400	473.71
3965-794	18X14	1	0	400	515.58
3965-796	18X16	1	0	400	674.63
3965-811	20X2	1	4	400	192.82
3965-813	20X3	1	2	400	193.27
3965-814	20X4	1	4	400	195.59
3965-816	20X6	1	0	400	205.17
3965-818	20X8	1	0	400	296.39
3965-820	20X10	1	0	400	328.69
3965-822	20X12	1	0	400	468.84
3965-824	20X14	1	0	400	511.33
3965-826	20X16	1	0	400	669.96
3965-828	20X18	1	0	400	760.68
3965-901	24X2	1	5	400	196.20
3965-903	24X3	1	2	400	197.24
3965-904	24X4	1	5	400	198.15
3965-906	24X6	1	3	400	206.78
3965-908	24X8	1	0	400	296.86
3965-910	24X10	1	0	400	330.12
3965-912	24X12	1	0	409	460.98
3965-914	24X14	1	0	400	509.55
3965-916	24X16	1	0	400	697.43
3965-918	24X18	1	0	400	786.46

Part Number	Size	Std Pk	Mstr Ctn	Prod Code	MSRP
-------------	------	--------	----------	-----------	------

Stub Saddle (continued)

IPS O.D.x Socket Schedule 80

3965-920	24X20	1	0	400	885.16
----------	-------	---	---	-----	--------