



Drain, Waste & Vent (DWV) Product  
**PVC Schedule 40 & 80 DWV Fabricated Fittings**

# **PVC Schedule 40 & 80 DWV Fabricated Fittings**



## **PRODUCT**

Contact Spears® for any Information not found.

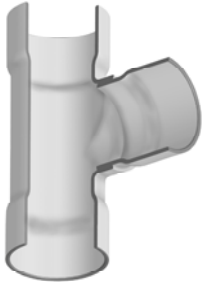
**Drain, Waste & Vent (DWV) Product**  
**PVC Schedule 40 & 80 DWV Fabricated Fittings**



<b>Tees</b>			
	<b>Size</b>	SCH 40 DWV	SCH 80 DWV
		Prod Code: 390	Prod Code: 400
		Part Number MSRP	Part Number MSRP

**TEE (Socket x Socket x Socket)**

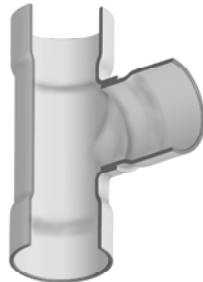
	6	3701-060 122.67	3901-060 283.66
	6X2	3701-528 106.01	3901-528 158.96
	6X3	3701-530 111.35	3901-530 166.44
	6X4	3701-532 116.46	3901-532 172.80
	8	3701-080 199.83	3901-080 338.64
	8X2	3701-578 124.64	3901-578 222.64
	8X3	3701-580 130.71	3901-580 250.85
	8X4	3701-582 134.26	3901-582 256.44
	8X6	3701-585 145.68	3901-585 266.24
	10	3701-100 388.66	3901-100 528.19
	10X2	3701-621 202.91	3901-621 314.14
	10X3	3701-623 206.66	3901-623 342.15
	10X4	3701-624 211.72	3901-624 387.06
	10X6	3701-626 258.79	3901-626 472.97
	10X8	3701-628 346.94	3901-628 495.63
	12	3701-120 516.54	3901-120 743.11
	12X2	3701-661 270.89	3901-661 389.03
	12X3	3701-663 274.89	3901-663 453.38
	12X4	3701-664 281.81	3901-664 515.09
	12X6	3701-666 327.32	3901-666 599.29
	12X8	3701-668 390.96	3901-668 659.83
	12X10	3701-670 445.51	3901-670 668.47
	14	3701-140 1015.36	3901-140 1307.02
	14X2	3701-691 429.61	3901-691 688.89
	14X3	3701-693 475.49	3901-693 770.74
	14X4	3701-694 530.12	3901-694 848.25



	<b>Size</b>	SCH 40 DWV	SCH 80 DWV
		Prod Code: 390	Prod Code: 400
		Part Number MSRP	Part Number MSRP

**TEE (Socket x Socket x Socket) (continued)**

	14X6	3701-696 622.14	3901-696 995.44
	14X8	3701-698 741.76	3901-698 1192.64
	14X10	3701-700 843.17	3901-700 1254.65
	14X12	3701-702 997.45	3901-702 1266.83
	16	3701-160 1437.26	3901-160 2059.07
	16X2	3701-751 612.61	3901-751 883.20
	16X3	3701-753 619.33	3901-753 976.91
	16X4	3701-754 657.43	3901-754 1051.82
	16X6	3701-756 711.14	3901-756 1137.73
	16X8	3701-758 832.51	3901-758 1332.75
	16X10	3701-760 1046.48	3901-760 1492.16
	16X12	3701-762 1188.29	3901-762 1891.66
	16X14	3701-764 1410.24	3901-764 1956.08
	18	3701-180 1786.15	3901-180 2223.06
	18X4	3701-784 1049.89	3901-784 1220.73
	18X6	3701-786 1066.52	3901-786 1381.35
	18X8	3701-788 1110.28	3901-788 1433.06
	18X10	3701-790 1251.41	3901-790 1448.13
	18X12	3701-792 1333.15	3901-792 1780.19
	18X14	3701-794 1429.91	3901-794 2047.15
	18X16	3701-796 1534.77	3901-796 2091.83
	20	3701-200 2378.61	3901-200 3199.09
	20X4	3701-814 1268.88	3901-814 1694.83
	20X6	3701-816 1342.68	3901-816 1911.32
	20X8	3701-818 1418.78	3901-818 2347.32
	20X10	3701-820 1522.60	3901-820 2425.12
	20X12	3701-822 1612.23	3901-822 2561.62



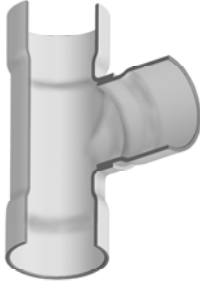


**Drain, Waste & Vent (DWV) Product**  
**PVC Schedule 40 & 80 DWV Fabricated Fittings**

**Tees**

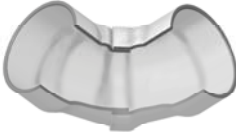
Size	SCH 40 DWV Prod Code: 390		SCH 80 DWV Prod Code: 400	
	Part Number		Part Number	
	MSRP		MSRP	

**TEE (Socket x Socket x Socket) (continued)**

	20X14	3701-824 1739.82	3901-824 2786.23
	20X16	3701-826 1852.64	3901-826 2837.05
	20X18	3701-828 2043.53	3901-828 3067.34
	24	3701-240 2963.36	3901-240 3837.12
	24X4	3701-904 1747.23	3901-904 2101.12
	24X6	3701-906 1836.58	3901-906 2369.57
	24X8	3701-908 1948.46	3901-908 2563.28
	24X10	3701-910 2058.48	3901-910 2789.14
	24X12	3701-912 2169.13	3901-912 2934.89
	24X14	3701-914 2317.67	3901-914 3254.19
	24X16	3701-916 2451.48	3901-916 3357.94
	24X18	3701-918 2663.35	3901-918 3521.75
	24X20	3701-920 2859.46	3901-920 3683.79

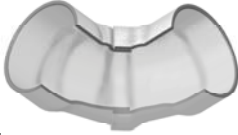
**90° Ells**

**90° ELBOW (Socket x Socket)**


	1-1/2	---	3906-015 85.72
	2	---	3906-020 95.77
	2-1/2	---	3906-025 113.17
	3	---	3906-030 133.65
	4	---	3906-040 151.21
	6	3706-060 121.11	3906-060 156.78
	8	3706-080 168.24	3906-080 263.32
	10	3706-100 265.95	3906-100 519.80
	12	3706-120 409.09	3906-120 758.01
	14	3706-140 547.88	3906-140 1115.25
	16	3706-160 812.49	3906-160 1387.04

Size	SCH 40 DWV Prod Code: 390		SCH 80 DWV Prod Code: 400	
	Part Number MSRP		Part Number MSRP	

**90° ELBOW (Socket x Socket) (continued)**

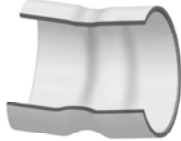
	18	3706-180 1208.41	3906-180 1785.61
	20	3706-200 1359.17	3906-200 2105.29
	24	3706-240 1699.69	3906-240 3150.13

**90° Elbow-Long sweep (Socket x Socket)**

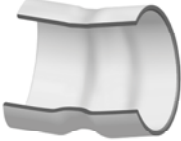
	2-1/2	3706-025LSF 52.71	---
	3	3706-030LSF 83.14	3906-030LSF 98.33
	4	3706-040LSF 123.82	3906-040LSF 146.77
	6	3706-060LSF 158.99	3906-060LSF 277.26
	8	3706-080LSF 316.54	3906-080LSF 409.29
	10	3706-100LSF 452.04	3906-100LSF 843.78

**Non 90° Ells**

**11-1/4° ELBOW (Socket x Socket)**

	4	3711-040 43.29	3911-040 58.87
	6	3711-060 69.55	3911-060 110.06
	8	3711-080 117.57	3911-080 180.16
	10	3711-100 177.41	3911-100 319.29
	12	3711-120 280.65	3911-120 466.66
	14	3711-140 441.23	3911-140 714.41
	16	3711-160 601.47	3911-160 954.97
	18	3711-180 673.15	3911-180 1232.81
	20	3711-200 892.89	3911-200 1580.43
	24	3711-240 1596.33	3911-240 1809.01

**15° ELBOW (Socket x Socket)**

	4	3718-040 43.29	3918-040 58.87
	6	3718-060 69.55	3918-060 110.06
	8	3718-080 117.57	3918-080 180.16
	10	3718-100 177.41	3918-100 319.29
	12	3718-120 280.65	3918-120 466.66

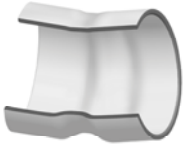
**Drain, Waste & Vent (DWV) Product**  
**PVC Schedule 40 & 80 DWV Fabricated Fittings**



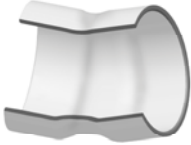
**Non 90° Ells**

	Size	SCH 40 DWV	SCH 80 DWV
		Prod Code: 390	Prod Code: 400
		Part Number MSRP	Part Number MSRP

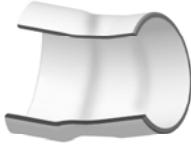
**15° ELBOW (Socket x Socket) (continued)**

	14	3718-140 <b>441.23</b>	3918-140 <b>714.41</b>
	16	3718-160 <b>601.47</b>	3918-160 <b>954.97</b>
	18	3718-180 <b>673.15</b>	3918-180 <b>1232.81</b>
	20	3718-200 <b>892.89</b>	3918-200 <b>1580.43</b>
	24	3718-240 <b>1596.33</b>	3918-240 <b>1809.01</b>

**22-1/2° ELBOW (Socket x Socket)**

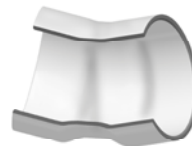
	4	3716-040 <b>43.29</b>	3916-040 <b>58.87</b>
	6	3716-060 <b>69.55</b>	3916-060 <b>110.06</b>
	8	3716-080 <b>117.57</b>	3916-080 <b>180.16</b>
	10	3716-100 <b>177.41</b>	3916-100 <b>319.29</b>
	12	3716-120 <b>280.65</b>	3916-120 <b>466.66</b>
	14	3716-140 <b>441.23</b>	3916-140 <b>714.41</b>
	16	3716-160 <b>601.47</b>	3916-160 <b>954.97</b>
	18	3716-180 <b>722.33</b>	3916-180 <b>1232.81</b>
	24	3716-240 <b>1596.33</b>	3916-240 <b>1809.01</b>

**22-1/2° STREET ELL (Spigot x Socket)**

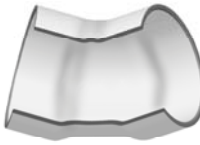
	6	3742-060 <b>76.49</b>	3942-060 <b>121.03</b>
	8	3742-080 <b>129.32</b>	3942-080 <b>198.16</b>
	10	3742-100 <b>195.14</b>	3942-100 <b>351.23</b>
	12	3742-120 <b>308.71</b>	3942-120 <b>513.34</b>
	14	3742-140 <b>485.34</b>	3942-140 <b>785.86</b>
	16	3742-160 <b>477.66</b>	3942-160 <b>1050.46</b>
	18	3742-180 <b>794.56</b>	3942-180 <b>1354.35</b>
	24	3742-240 <b>1878.02</b>	3942-240 <b>2128.71</b>

	Size	SCH 40 DWV	SCH 80 DWV
		Prod Code: 390	Prod Code: 400
		Part Number MSRP	Part Number MSRP

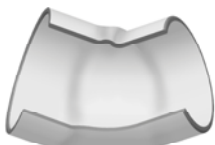
**30° ELBOW (Socket x Socket)**

	4	3715-040 <b>43.29</b>	3915-040 <b>58.87</b>
	6	3715-060 <b>69.55</b>	3915-060 <b>110.06</b>
	8	3715-080 <b>117.57</b>	3915-080 <b>180.16</b>
	10	3715-100 <b>177.41</b>	3915-100 <b>319.29</b>
	12	3715-120 <b>280.65</b>	3915-120 <b>466.66</b>
	14	3715-140 <b>441.23</b>	3915-140 <b>714.41</b>
	16	3715-160 <b>601.47</b>	3915-160 <b>954.97</b>
	18	3715-180 <b>722.33</b>	3915-180 <b>1232.81</b>
	20	3715-200 <b>892.89</b>	3915-200 <b>1580.43</b>
	24	3715-240 <b>1596.33</b>	3915-240 <b>1809.01</b>

**45° ELBOW (Socket x Socket)**

	4	3717-040 <b>105.76</b>	3917-040 <b>129.41</b>
	6	3717-060 <b>112.41</b>	3917-060 <b>184.45</b>
	8	3717-080 <b>134.60</b>	3917-080 <b>198.20</b>
	10	3717-100 <b>221.39</b>	3917-100 <b>363.08</b>
	12	3717-120 <b>310.93</b>	3917-120 <b>519.04</b>
	14	3717-140 <b>539.12</b>	3917-140 <b>745.93</b>
	16	3717-160 <b>665.66</b>	3917-160 <b>965.95</b>
	18	3717-180 <b>768.19</b>	3917-180 <b>1306.66</b>
	20	3717-200 <b>1048.88</b>	3917-200 <b>1641.23</b>
	24	3717-240 <b>1393.72</b>	3917-240 <b>1932.16</b>

**45° STREET ELL (Spigot x Socket)**

	4	3727-040 <b>105.76</b>	3927-040 <b>129.41</b>
	6	3727-060 <b>112.41</b>	3927-060 <b>184.45</b>
	8	3727-080 <b>134.60</b>	3927-080 <b>198.20</b>
	10	3727-100 <b>221.39</b>	3927-100 <b>363.08</b>
	12	3727-120 <b>310.93</b>	3927-120 <b>519.04</b>
	14	3727-140 <b>539.12</b>	3927-140 <b>745.93</b>

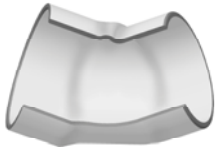


**Drain, Waste & Vent (DWV) Product**  
**PVC Schedule 40 & 80 DWV Fabricated Fittings**


**Non 90° Ells**

Size	SCH 40 DWV Prod Code: 390	SCH 80 DWV Prod Code: 400
	Part Number MSRP	Part Number MSRP

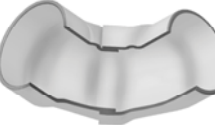
**45° STREET ELL (Spigot x Socket) (continued)**

	16	3727-160 <b>665.66</b>	3927-160 <b>965.95</b>
	18	3727-180 <b>768.19</b>	3927-180 <b>1306.66</b>
	20	3727-200 <b>1048.88</b>	3927-200 <b>1641.23</b>
	24	3727-240 <b>1393.72</b>	3927-240 <b>1932.16</b>

**60° ELBOW (Socket x Socket)**

	4	3724-040 <b>127.74</b>	3924-040 <b>169.42</b>
	6	3724-060 <b>134.34</b>	3924-060 <b>195.96</b>
	8	3724-080 <b>191.66</b>	3924-080 <b>329.20</b>
	10	3724-100 <b>321.19</b>	3924-100 <b>617.04</b>
	12	3724-120 <b>420.82</b>	3924-120 <b>908.18</b>
	14	3724-140 <b>771.37</b>	3924-140 <b>1319.69</b>
	16	3724-160 <b>937.83</b>	3924-160 <b>1603.48</b>
	18	3724-180 <b>1204.83</b>	3924-180 <b>1785.61</b>
	20	3724-200 <b>1285.27</b>	3924-200 <b>3556.27</b>
	24	3724-240 <b>1655.96</b>	3924-240 <b>6233.61</b>

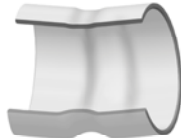
**90° STREET ELL (Spigot x Socket)**

	4	3709-040 <b>126.95</b>	3909-040 <b>147.52</b>
	6	3709-060 <b>128.56</b>	3909-060 <b>174.81</b>
	8	3709-080 <b>176.84</b>	3909-080 <b>287.88</b>
	10	3709-100 <b>295.49</b>	3909-100 <b>570.60</b>
	12	3709-120 <b>430.64</b>	3909-120 <b>838.33</b>
	14	3709-140 <b>595.52</b>	3909-140 <b>1225.08</b>
	16	3709-160 <b>926.22</b>	3909-160 <b>1521.46</b>
	18	3709-180 <b>1339.55</b>	3909-180 <b>1959.37</b>
	20	3709-200 <b>1509.98</b>	3909-200 <b>2311.83</b>
	24	3709-240 <b>1888.19</b>	3909-240 <b>2469.85</b>


**Couplings**

Size	SCH 40 DWV Prod Code: 390	SCH 80 DWV Prod Code: 400
	Part Number MSRP	Part Number MSRP

**COUPLING (Socket x Socket)**

	8	3729-080 <b>76.76</b>	3929-080 <b>169.92</b>
	10	3729-100 <b>94.38</b>	3929-100 <b>185.05</b>
	12	3729-120 <b>138.94</b>	3929-120 <b>213.31</b>
	14	3729-140 <b>225.61</b>	3929-140 <b>426.54</b>
	16	3729-160 <b>251.63</b>	3929-160 <b>507.11</b>
	18	3729-180 <b>429.12</b>	3929-180 <b>999.57</b>
	20	3729-200 <b>748.60</b>	3929-200 <b>1232.42</b>
	24	3729-240 <b>1039.65</b>	3929-240 <b>2126.02</b>

**REPAIR COUPLING (Gasket x Gasket)**

	4	3728-040 <b>74.39</b>	3928-040 <b>86.92</b>
	6	3728-060 <b>103.48</b>	3928-060 <b>122.48</b>
	8	3728-080 <b>162.89</b>	3928-080 <b>207.20</b>
	10	3728-100 <b>214.92</b>	3928-100 <b>289.93</b>
	12	3728-120 <b>269.62</b>	3928-120 <b>368.44</b>
	14	3728-140 <b>467.85</b>	3928-140 <b>815.83</b>
	16	3728-160 <b>689.31</b>	3928-160 <b>1223.99</b>
	18	3728-180 <b>901.13</b>	3928-180 <b>1591.09</b>
	20	3728-200 <b>1399.34</b>	3928-200 <b>1909.33</b>
	24	3728-240 <b>1897.84</b>	3928-240 <b>2575.38</b>

**Reducer Couplings**

**REDUCER COUPLING (Socket x Socket)**

	6X2	3729-528 <b>111.62</b>	3929-528 <b>193.54</b>
	6X3	3729-530 <b>109.87</b>	3929-530 <b>142.97</b>
	6X4	3729-532 <b>39.86</b>	3929-532 <b>94.06</b>
	8X2	3729-578 <b>187.76</b>	3929-578 <b>261.46</b>
	8X3	3729-580 <b>173.82</b>	3929-580 <b>228.52</b>
	8X4	3729-582 <b>98.81</b>	3929-582 <b>180.59</b>



**Drain, Waste & Vent (DWV) Product**  
**PVC Schedule 40 & 80 DWV Fabricated Fittings**



**Reducer Couplings**

	Size	SCH 40 DWV	SCH 80 DWV
		Prod Code: 390	Prod Code: 400
		Part Number MSRP	Part Number MSRP

**REDUCER COUPLING (Socket x Socket) (continued)**

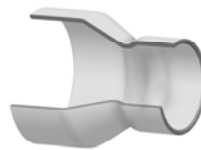
8X6	3729-585 84.93	3929-585 166.19
10X4	3729-624 222.98	3929-624 424.24
10X6	3729-626 207.80	3929-626 338.51
10X8	3729-628 145.44	3929-628 180.93
12X4	3729-664 419.25	3929-664 609.56
12X6	3729-666 317.89	3929-666 502.59
12X8	3729-668 279.78	3929-668 436.14
12X10	3729-670 211.72	3929-670 267.88
14X4	3729-694 674.69	3929-694 824.79
14X6	3729-696 653.18	3929-696 736.72
14X8	3729-698 472.81	3929-698 724.65
14X10	3729-700 399.33	3929-700 611.78
14X12	3729-702 354.62	3929-702 391.09
16X4	3729-754 722.13	3929-754 1211.98
16X6	3729-756 665.15	3929-756 1136.24
16X8	3729-758 605.25	3929-758 1073.13
16X10	3729-760 540.55	3929-760 746.08
16X12	3729-762 490.74	3929-762 685.86
16X14	3729-764 425.60	3929-764 578.20
18X6	3729-786 1202.07	3929-786 1751.71
18X8	3729-788 1019.55	3929-788 1621.01
18X10	3729-790 951.33	3929-790 1489.71
18X12	3729-792 890.71	3929-792 1245.02
18X14	3729-794 821.44	3929-794 1205.61
18X16	3729-796 613.62	3929-796 1030.52
20X6	3729-816 1505.63	3929-816 2463.22



Size	SCH 40 DWV	SCH 80 DWV
	Prod Code: 390	Prod Code: 400
	Part Number MSRP	Part Number MSRP

**REDUCER COUPLING (Socket x Socket) (continued)**

20X8	3729-818 1458.15	3929-818 2434.72
20X10	3729-820 1278.36	3929-820 2416.62
20X12	3729-822 1260.84	3929-822 2266.33
20X14	3729-824 1245.27	3929-824 2248.31
20X16	3729-826 1174.76	3929-826 1800.57
20X18	3729-828 1037.83	3929-828 1241.63
24X6	3729-906 3028.09	3929-906 4164.88
24X8	3729-908 2941.34	3929-908 4130.14
24X10	3729-910 2431.93	3929-910 4116.02
24X12	3729-912 2351.75	3929-912 4049.52
24X14	3729-914 2229.98	3929-914 4035.96
24X16	3729-916 2047.57	3929-916 3880.89
24X18	3729-918 1813.08	3929-918 2958.89
24X20	3729-920 1362.99	3929-920 2653.61



**ECCENTRIC REDUCER COUPLING (Socket x Socket)**

3X2	3729-338E 35.40	3929-338E 49.32
4X2	3729-420E <sup>2</sup> 48.07	3929-420E <sup>2</sup> 125.82
4X3	3729-422E 44.43	3929-422E 64.24
6X2	3729-528E <sup>2</sup> 108.52	3929-528E <sup>3</sup> 163.80
6X3	3729-530E <sup>2</sup> 99.96	3929-530E <sup>2</sup> 159.14
6X4	3729-532E <sup>1</sup> 49.98	3929-532E 121.38
8X3	3729-580E <sup>3</sup> 206.17	3929-580E <sup>3</sup> 231.28
8X4	3729-582E <sup>2</sup> 102.95	3929-582E <sup>2</sup> 209.93
8X6	3729-585E 83.22	3929-585E 161.43
10X4	3729-624E <sup>2</sup> 235.40	3929-624E <sup>3</sup> 355.24
10X6	3729-626E 216.44	3929-626E <sup>2</sup> 301.51
10X8	3729-628E 204.06	3929-628E 278.60
12X4	3729-664E <sup>3</sup> 439.20	3929-664E <sup>4</sup> 543.24






**Drain, Waste & Vent (DWV) Product**  
**PVC Schedule 40 & 80 DWV Fabricated Fittings**

**Reducer Couplings**

	Size	SCH 40 DWV	SCH 80 DWV
		Prod Code: 390	Prod Code: 400
		Part Number MSRP	Part Number MSRP

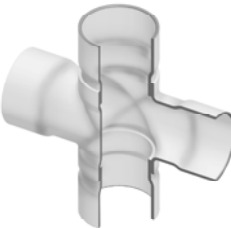
**ECCENTRIC REDUCER COUPLING (Socket x Socket) (continued)**

	12X6	3729-666E <sup>2</sup> 360.88	3929-666E <sup>3</sup> 447.08
	12X8	3729-668E <sup>2</sup> 239.32	3929-668E <sup>2</sup> 386.25
	12X10	3729-670E 207.49	3929-670E 246.89
	14X6	3729-696E <sup>2</sup> 733.12	3929-696E <sup>3</sup> 884.93
	14X8	3729-698E <sup>2</sup> 600.55	3929-698E <sup>2</sup> 791.62
	14X10	3729-700E <sup>1</sup> 545.17	3929-700E <sup>1</sup> 573.12
	14X12	3729-702E 333.28	3929-702E 527.07
	16X6	3729-756E <sup>4</sup> 766.05	3929-756E <sup>4</sup> 1634.95
	16X8	3729-758E <sup>3</sup> 755.32	3929-758E <sup>3</sup> 1497.15
	16X10	3729-760E <sup>3</sup> 558.53	3929-760E <sup>2</sup> 1089.13
	16X12	3729-762E 531.46	3929-762E <sup>2</sup> 966.97
	16X14	3729-764E 472.24	3929-764E 748.98
	18X6	3729-786E <sup>5</sup> 1088.83	3929-786E <sup>5</sup> 2256.91
	18X8	3729-788E <sup>4</sup> 1072.71	3929-788E <sup>4</sup> 2160.46
	18X10	3729-790E <sup>3</sup> 995.91	3929-790E <sup>3</sup> 2018.89
	18X12	3729-792E <sup>2</sup> 898.79	3929-792E <sup>3</sup> 1802.02
18X14	3729-794E <sup>2</sup> 794.66	3929-794E <sup>2</sup> 1485.65	
18X16	3729-796E 641.03	3929-796E 1449.65	

2=Two-Step Design, 3=Three-Step Design, 4=Four-Step Design, 5=Five-Step Design, 6=Six-Step Design

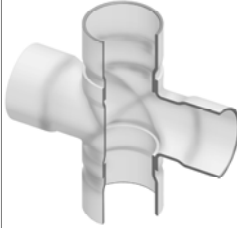
**Crosses**

**CROSS (Socket x Socket x Socket x Socket)**

	4X2	---	3920-420 135.53
	4X3	---	3920-422 149.14
	6	3720-060 157.60	3920-060 367.57
	6X2	3720-528 118.31	3920-528 190.44
	6X3	3720-530 140.09	3920-530 214.65
	6X4	3720-532 154.46	3920-532 265.02

Size	SCH 40 DWV	SCH 80 DWV
	Prod Code: 390	Prod Code: 400
	Part Number MSRP	Part Number MSRP

**CROSS (Socket x Socket x Socket x Socket) (continued)**

	8	3720-080 318.31	3920-080 442.69
	8X2	3720-578 204.36	3920-578 240.29
	8X3	3720-580 221.09	3920-580 255.28
	8X4	3720-582 242.89	3920-582 273.86
	8X6	3720-585 305.62	3920-585 354.93
	10	3720-100 518.14	3920-100 947.11
	10X2	3720-621 217.03	3920-621 434.94
	10X3	3720-623 249.97	3920-623 503.28
	10X4	3720-624 286.76	3920-624 516.03
	10X6	3720-626 328.84	3920-626 630.55
	10X8	3720-628 461.67	3920-628 832.07
	12	3720-120 683.07	3920-120 1334.61
	12X2	3720-661 286.82	3920-661 588.82
	12X3	3720-663 321.92	3920-663 658.18
	12X4	3720-664 340.33	3920-664 686.80
	12X6	3720-666 415.99	3920-666 797.48
	12X8	3720-668 505.52	3920-668 952.65
	12X10	3720-670 586.75	3920-670 1085.59
	14	3720-140 1134.73	3920-140 2373.05
	14X2	3720-691 559.84	3920-691 893.85
	14X3	3720-693 623.35	3920-693 984.73
	14X4	3720-694 692.06	3920-694 1100.93
	14X6	3720-696 778.46	3920-696 1235.60
	14X8	3720-698 896.84	3920-698 1421.19
	14X10	3720-700 1019.02	3920-700 1701.76
	14X12	3720-702 1078.08	3920-702 1993.85
	16	3720-160 1657.59	3920-160 3008.45

**Drain, Waste & Vent (DWV) Product**  
**PVC Schedule 40 & 80 DWV Fabricated Fittings**

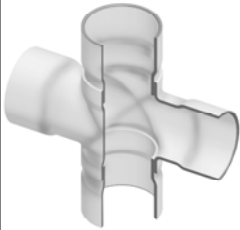


**Crosses**

Size	SCH 40 DWV	SCH 80 DWV
	Prod Code: 390	Prod Code: 400
	Part Number MSRP	Part Number MSRP

**CROSS (Socket x Socket x Socket x Socket) (continued)**

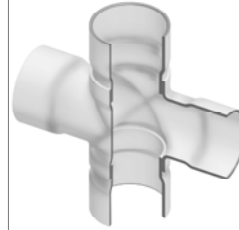
16X2	3720-751 768.22	3920-751 1212.34
16X3	3720-753 844.31	3920-753 1324.44
16X4	3720-754 876.57	3920-754 1402.45
16X6	3720-756 948.07	3920-756 1516.96
16X8	3720-758 1110.61	3920-758 1776.94
16X10	3720-760 1322.96	3920-760 2046.31
16X12	3720-762 1520.39	3920-762 2430.88
16X14	3720-764 1596.43	3920-764 2866.77
18	3720-180 2348.40	3920-180 3713.96
18X4	3720-784 950.44	3920-784 1769.98
18X6	3720-786 1340.02	3920-786 2023.07
18X8	3720-788 1518.20	3920-788 2413.45
18X10	3720-790 1642.03	3920-790 2735.19
18X12	3720-792 1745.83	3920-792 3034.37
18X14	3720-794 1839.71	3920-794 3242.99
18X16	3720-796 2135.17	3920-796 3522.65
20	3720-200 3995.23	3920-200 6270.04
20X4	3720-814 1678.07	3920-814 2326.03
20X6	3720-816 1742.62	3920-816 2516.18
20X8	3720-818 2164.86	3920-818 2738.15
20X10	3720-820 2473.08	3920-820 3214.51
20X12	3720-822 2580.63	3920-822 3557.89
20X14	3720-824 2807.08	3920-824 3843.72
20X16	3720-826 3156.84	3920-826 4274.36
20X18	3720-828 3415.59	3920-828 5097.92
24	3720-240 5261.87	3920-240 7600.65



Size	SCH 40 DWV	SCH 80 DWV
	Prod Code: 390	Prod Code: 400
	Part Number MSRP	Part Number MSRP

**CROSS (Socket x Socket x Socket x Socket) (continued)**

24X4	3720-904 2144.93	3920-904 2567.85
24X6	3720-906 2546.64	3920-906 2928.24
24X8	3720-908 2710.99	3920-908 3821.73
24X10	3720-910 2898.13	3920-910 4148.22
24X12	3720-912 3191.72	3920-912 4758.77
24X14	3720-914 3282.79	3920-914 5585.93
24X16	3720-916 3638.35	3920-916 5922.66
24X18	3720-918 4063.42	3920-918 6220.75
24X20	3720-920 4920.09	3920-920 6624.61



**Wyes**

**WYE (Socket x Socket x Socket)**

2	---	3975-020 166.45
3	---	3975-030 260.58
4	---	3975-040 302.64
6	---	3975-060 320.19
8	3775-080 220.80	3975-080 369.20
8X2	3775-578 144.05	3975-578 261.13
8X3	3775-580 149.72	3975-580 288.84
8X4	3775-582 155.91	3975-582 296.06
8X6	3775-585 204.62	3975-585 299.11
10	3775-100 441.12	3975-100 658.95
10X2	3775-621 257.93	3975-621 380.18
10X3	3775-623 270.15	3975-623 396.25
10X4	3775-624 277.62	3975-624 407.51
10X6	3775-626 334.74	3975-626 514.94
10X8	3775-628 410.27	3975-628 560.78
12	3775-120 581.91	3975-120 996.98
12X2	3775-661 306.88	3975-661 639.44







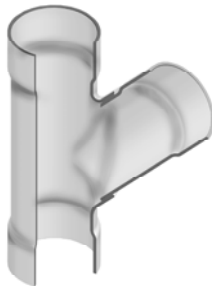
**Drain, Waste & Vent (DWV) Product**  
**PVC Schedule 40 & 80 DWV Fabricated Fittings**

**Wyes**

Size	SCH 40 DWV Prod Code: 390		SCH 80 DWV Prod Code: 400	
	Part Number MSRP		Part Number MSRP	

**WYE (Socket x Socket x Socket) (continued)**

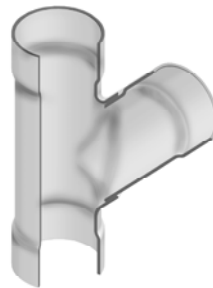
12X3	3775-663 318.69	3975-663 647.09
12X4	3775-664 329.60	3975-664 657.98
12X6	3775-666 392.76	3975-666 717.84
12X8	3775-668 436.39	3975-668 797.63
12X10	3775-670 512.81	3975-670 937.14
14	3775-140 1252.31	3975-140 1514.16
14X2	3775-691 623.03	3975-691 1023.56
14X3	3775-693 653.42	3975-693 1039.15
14X4	3775-694 664.37	3975-694 1047.51
14X6	3775-696 717.08	3975-696 1147.33
14X8	3775-698 820.60	3975-698 1271.15
14X10	3775-700 877.17	3975-700 1327.23
14X12	3775-702 1121.51	3975-702 1406.71
16	3775-160 1593.35	3975-160 2330.82
16X2	3775-751 707.93	3975-751 1187.28
16X3	3775-753 748.97	3975-753 1202.25
16X4	3775-754 782.93	3975-754 1252.63
16X6	3775-756 842.61	3975-756 1348.14
16X8	3775-758 960.80	3975-758 1420.66
16X10	3775-760 1154.22	3975-760 1555.25
16X12	3775-762 1257.00	3975-762 2084.05
16X14	3775-764 1523.25	3975-764 2218.66
18	3775-180 1832.17	3975-180 3131.18
18X4	3775-784 1255.35	3975-784 1619.00
18X6	3775-786 1275.57	3975-786 1646.15
18X8	3775-788 1317.15	3975-788 1774.38



Size	SCH 40 DWV Prod Code: 390	SCH 80 DWV Prod Code: 400
	Part Number MSRP	Part Number MSRP

**WYE (Socket x Socket x Socket) (continued)**

18X10	3775-790 1401.26	3975-790 1825.87
18X12	3775-792 1534.64	3975-792 2009.95
18X14	3775-794 1677.77	3975-794 2441.33
18X16	3775-796 1778.76	3975-796 2943.36
20	3775-200 2700.15	3975-200 5339.82
20X4	3775-814 1454.72	3975-814 1888.38
20X6	3775-816 1460.01	3975-816 2042.80
20X8	3775-818 1567.37	3975-818 2539.32
20X10	3775-820 1622.04	3975-820 2642.97
20X12	3775-822 1831.03	3975-822 2909.51
20X14	3775-824 2129.68	3975-824 3371.74
20X16	3775-826 2339.00	3975-826 3462.96
20X18	3775-828 2527.84	3975-828 3619.76
24	3775-240 3359.85	3975-240 9174.84
24X4	3775-904 1813.73	3975-904 2689.25
24X6	3775-906 2000.99	3975-906 2953.86
24X8	3775-908 2120.51	3975-908 3419.65
24X10	3775-910 2279.67	3975-910 3466.83
24X12	3775-912 2352.47	3975-912 3802.35
24X14	3775-914 2465.19	3975-914 4009.78
24X16	3775-916 2605.14	3975-916 4598.95
24X18	3775-918 2787.28	3975-918 5400.01
24X20	3775-920 3145.78	3975-920 5575.94



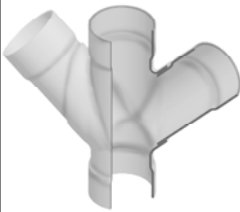
**Drain, Waste & Vent (DWV) Product**  
**PVC Schedule 40 & 80 DWV Fabricated Fittings**



		<b>Wyes</b>	
	<b>Size</b>	SCH 40 DWV	SCH 80 DWV
		Prod Code: 390	Prod Code: 400
		Part Number MSRP	Part Number MSRP

**DOUBLE WYE (Socket x Socket x Socket x Socket)**

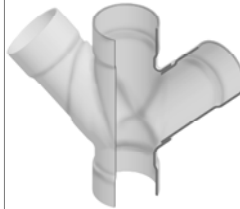
6	3776-060	3976-060
	<b>163.55</b>	<b>209.35</b>
6X4	3776-532	3976-532
	<b>127.96</b>	<b>194.45</b>
8	3776-080	3976-080
	<b>315.43</b>	<b>403.77</b>
8X2	3776-578	3976-578
	<b>171.75</b>	<b>230.91</b>
8X3	3776-580	3976-580
	<b>183.49</b>	<b>239.02</b>
8X4	3776-582	3976-582
	<b>191.27</b>	<b>272.09</b>
8X6	3776-585	3976-585
	<b>241.52</b>	<b>347.72</b>
10	3776-100	3976-100
	<b>462.65</b>	<b>740.26</b>
10X2	3776-621	3976-621
	<b>244.47</b>	<b>410.02</b>
10X3	3776-623	3976-623
	<b>255.43</b>	<b>420.39</b>
10X4	3776-624	3976-624
	<b>268.22</b>	<b>429.14</b>
10X6	3776-626	3976-626
	<b>331.82</b>	<b>530.89</b>
10X8	3776-628	3976-628
	<b>401.78</b>	<b>641.39</b>
12	3776-120	3976-120
	<b>755.34</b>	<b>1211.32</b>
12X2	3776-661	3976-661
	<b>330.93</b>	<b>676.15</b>
12X3	3776-663	3976-663
	<b>341.81</b>	<b>682.11</b>
12X4	3776-664	3976-664
	<b>349.46</b>	<b>687.96</b>
12X6	3776-666	3976-666
	<b>415.99</b>	<b>809.43</b>
12X8	3776-668	3976-668
	<b>530.98</b>	<b>983.31</b>
12X10	3776-670	3976-670
	<b>679.78</b>	<b>1110.39</b>
14	3776-140	3976-140
	<b>1339.74</b>	<b>1682.51</b>
14X2	3776-691	3976-691
	<b>638.44</b>	<b>1197.23</b>
14X3	3776-693	3976-693
	<b>668.24</b>	<b>1232.54</b>
14X4	3776-694	3976-694
	<b>696.34</b>	<b>1243.14</b>
14X6	3776-696	3976-696
	<b>775.21</b>	<b>1271.15</b>
14X8	3776-698	3976-698
	<b>898.36</b>	<b>1345.93</b>



	<b>Size</b>	SCH 40 DWV	SCH 80 DWV
		Prod Code: 390	Prod Code: 400
		Part Number MSRP	Part Number MSRP

**DOUBLE WYE (Socket x Socket x Socket x Socket) (continued)**

14X10	3776-700	3976-700
	<b>949.39</b>	<b>1420.66</b>
14X12	3776-702	3976-702
	<b>1229.55</b>	<b>1600.16</b>
16	3776-160	3976-160
	<b>1758.38</b>	<b>2614.97</b>
16X2	3776-751	3976-751
	<b>825.64</b>	<b>1404.67</b>
16X3	3776-753	3976-753
	<b>875.00</b>	<b>1416.46</b>
16X4	3776-754	3976-754
	<b>887.95</b>	<b>1420.66</b>
16X6	3776-756	3976-756
	<b>939.37</b>	<b>1502.93</b>
16X8	3776-758	3976-758
	<b>1028.13</b>	<b>1644.99</b>
16X10	3776-760	3976-760
	<b>1259.25</b>	<b>1876.79</b>
16X12	3776-762	3976-762
	<b>1357.13</b>	<b>2018.88</b>
16X14	3776-764	3976-764
	<b>1625.24</b>	<b>2401.01</b>
18	3776-180	3976-180
	<b>2456.37</b>	<b>3453.29</b>
18X4	3776-784	3976-784
	<b>1355.67</b>	<b>1818.66</b>
18X6	3776-786	3976-786
	<b>1377.53</b>	<b>2108.76</b>
18X8	3776-788	3976-788
	<b>1477.39</b>	<b>2163.58</b>
18X10	3776-790	3976-790
	<b>1798.76</b>	<b>2182.61</b>
18X12	3776-792	3976-792
	<b>1832.29</b>	<b>2345.09</b>
18X14	3776-794	3976-794
	<b>1967.45</b>	<b>2667.72</b>
18X16	3776-796	3976-796
	<b>2019.20</b>	<b>3118.20</b>
20	3776-200	3976-200
	<b>3193.91</b>	<b>5576.84</b>
20X4	3776-814	3976-814
	<b>1537.65</b>	<b>2238.31</b>
20X6	3776-816	3976-816
	<b>1617.54</b>	<b>2380.39</b>
20X8	3776-818	3976-818
	<b>1644.33</b>	<b>2574.67</b>
20X10	3776-820	3976-820
	<b>2165.41</b>	<b>2953.46</b>
20X12	3776-822	3976-822
	<b>2370.41</b>	<b>3277.40</b>
20X14	3776-824	3976-824
	<b>2588.78</b>	<b>3440.98</b>
20X16	3776-826	3976-826
	<b>2824.91</b>	<b>4375.99</b>






**Drain, Waste & Vent (DWV) Product**  
**PVC Schedule 40 & 80 DWV Fabricated Fittings**

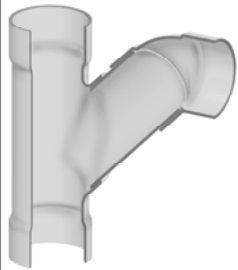
**Wyes**

Size	SCH 40 DWV Prod Code: 390		SCH 80 DWV Prod Code: 400	
	Part Number MSRP		Part Number MSRP	

**DOUBLE WYE (Socket x Socket x Socket x Socket) (continued)**

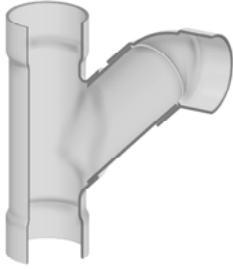
	20X18	3776-828 3089.56	3976-828 4653.35
	24	3776-240 3976.73	3976-240 7197.75
	24X4	3776-904 1981.21	3976-904 2909.51
	24X6	3776-906 2190.53	3976-906 3192.22
	24X8	3776-908 2247.65	3976-908 3494.54
	24X10	3776-910 2364.78	3976-910 3672.88
	24X12	3776-912 2503.46	3976-912 3766.98
	24X14	3776-914 2660.23	3976-914 5071.18
	24X16	3776-916 2894.13	3976-916 6335.03
	24X18	3776-918 2922.92	3976-918 6423.84
	24X20	3776-920 3756.45	3976-920 6773.04

**COMBO WYE (Socket x Socket x Socket)**

	6	3777-060 208.07	3977-060 333.02
	6X4	3777-532 162.11	3977-532 292.55
	8	3777-080 331.82	3977-080 548.67
	8X2	3777-578 181.95	3977-578 361.06
	8X3	3777-580 226.73	3977-580 369.91
	8X4	3777-582 230.96	3977-582 377.97
	8X6	3777-585 261.72	3977-585 418.71
	10	3777-100 592.66	3977-100 1046.82
	10X2	3777-621 270.66	3977-621 438.71
	10X3	3777-623 283.48	3977-623 455.34
	10X4	3777-624 289.75	3977-624 463.61
	10X6	3777-626 364.52	3977-626 583.24
	10X8	3777-628 453.57	3977-628 762.68
	12	3777-120 860.37	3977-120 1314.09
	12X2	3777-661 438.61	3977-661 716.38

Size	SCH 40 DWV Prod Code: 390	SCH 80 DWV Prod Code: 400
	Part Number MSRP	Part Number MSRP

**COMBO WYE (Socket x Socket x Socket) (continued)**

	12X3	3777-663 447.87	3977-663 728.21
	12X4	3777-664 457.96	3977-664 732.80
	12X6	3777-666 508.87	3977-666 818.81
	12X8	3777-668 570.91	3977-668 972.08
	12X10	3777-670 710.32	3977-670 1136.59
	14	3777-140 1490.26	3977-140 2009.56
	14X2	3777-691 659.97	3977-691 1103.99
	14X3	3777-693 674.87	3977-693 1116.72
	14X4	3777-694 713.75	3977-694 1141.89
	14X6	3777-696 812.13	3977-696 1299.43
	14X8	3777-698 893.48	3977-698 1359.93
	14X10	3777-700 1057.42	3977-700 1546.89
	14X12	3777-702 1247.77	3977-702 1878.69
	16	3777-160 1749.93	3977-160 2799.93
	16X2	3777-751 857.81	3977-751 1395.12
	16X3	3777-753 873.69	3977-753 1416.39
	16X4	3777-754 894.52	3977-754 1431.15
	16X6	3777-756 946.09	3977-756 1513.77
	16X8	3777-758 1040.86	3977-758 1719.81
	16X10	3777-760 1177.65	3977-760 1884.27
	16X12	3777-762 1264.19	3977-762 2022.58
	16X14	3777-764 1551.96	3977-764 2435.12
	18	3777-180 2203.66	3977-180 3823.14
	18X4	3777-784 1343.53	3977-784 1696.07
	18X6	3777-786 1385.38	3977-786 1799.22
	18X8	3777-788 1422.75	3977-788 1982.65
	18X10	3777-790 1514.48	3977-790 2132.41

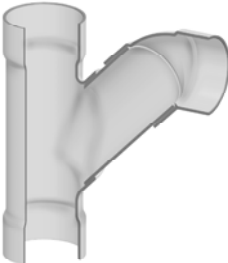
**Drain, Waste & Vent (DWV) Product**  
**PVC Schedule 40 & 80 DWV Fabricated Fittings**



**Wyes**

Size	SCH 40 DWV Prod Code: 390	SCH 80 DWV Prod Code: 400
	Part Number MSRP	Part Number MSRP

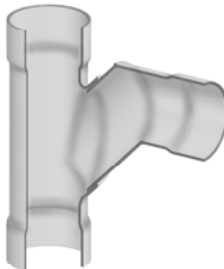
**COMBO WYE (Socket x Socket x Socket) (continued)**

	18X12	3777-792 1574.18	3977-792 2813.77
	18X14	3777-794 1787.38	3977-794 3219.25
	18X16	3777-796 2033.02	3977-796 3461.43
	20	3777-200 2855.48	3977-200 7044.09
	20X4	3777-814 1485.48	3977-814 1876.51
	20X6	3777-816 1608.72	3977-816 2078.08
	20X8	3777-818 1639.21	3977-818 2588.55
	20X10	3777-820 1718.44	3977-820 2893.55
	20X12	3777-822 2159.88	3977-822 3417.92
	20X14	3777-824 2273.76	3977-824 3767.11
	20X16	3777-826 2544.09	3977-826 4797.43
	20X18	3777-828 2599.80	3977-828 6559.76
	24	3777-240 3857.22	3977-240 7501.51
	24X4	3777-904 1980.36	3977-904 3037.67
	24X6	3777-906 2162.48	3977-906 3232.09
	24X8	3777-908 2412.29	3977-908 3370.02
	24X10	3777-910 2582.62	3977-910 3983.23
	24X12	3777-912 2690.06	3977-912 4287.46
	24X14	3777-914 2739.63	3977-914 5114.74
	24X16	3777-916 3168.00	3977-916 5971.33
24X18	3777-918 3384.29	3977-918 6769.11	
24X20	3777-920 3438.24	3977-920 7184.66	

**Sanitary Tees**

Size	SCH 40 DWV Prod Code: 390	SCH 80 DWV Prod Code: 400
	Part Number MSRP	Part Number MSRP

**SANITARY TEE (Socket x Socket x Socket)**

	2	---	3990-020 193.09
	3	---	3990-030 197.38
	4	---	3990-040 199.27
	6	3790-060 178.92	3990-060 300.91
	6X4	3790-532 134.04	3990-532 237.84
	8	3790-080 327.83	3990-080 544.81
	8X2	3790-578 167.71	3990-578 298.01
	8X3	3790-580 221.61	3990-580 339.43
	8X4	3790-582 210.29	3990-582 361.89
	8X6	3790-585 251.92	3990-585 402.98
	10	3790-100 586.12	3990-100 1034.79
	10X2	3790-621 257.36	3990-621 401.15
	10X3	3790-623 261.72	3990-623 412.56
	10X4	3790-624 280.41	3990-624 448.65
	10X6	3790-626 360.88	3990-626 568.28
	10X8	3790-628 441.87	3990-628 731.98
	12	3790-120 839.29	3990-120 1277.49
	12X2	3790-661 431.86	3990-661 678.15
	12X3	3790-663 436.79	3990-663 689.26
	12X4	3790-664 449.56	3990-664 717.84
	12X6	3790-666 490.17	3990-666 803.83
	12X8	3790-668 545.75	3990-668 954.79
	12X10	3790-670 687.45	3990-670 1106.14
	14	3790-140 1478.13	3990-140 1958.39
	14X2	3790-691 585.65	3990-691 1069.46
	14X3	3790-693 635.48	3990-693 1085.61



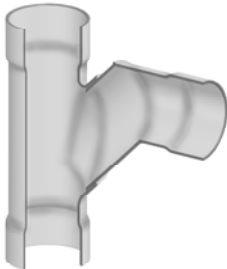
**Drain, Waste & Vent (DWV) Product**  
**PVC Schedule 40 & 80 DWV Fabricated Fittings**

**Sanitary Tees**

Size	SCH 40 DWV	SCH 80 DWV
	Prod Code: 390	Prod Code: 400
	Part Number MSRP	Part Number MSRP

**SANITARY TEE (Socket x Socket x Socket) (continued)**

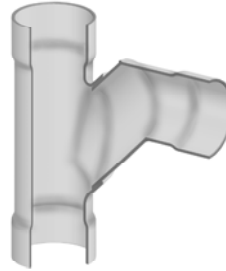
14X4	3790-694 <b>641.69</b>	3990-694 <b>1107.41</b>
14X6	3790-696 <b>765.28</b>	3990-696 <b>1262.73</b>
14X8	3790-698 <b>872.88</b>	3990-698 <b>1328.28</b>
14X10	3790-700 <b>1048.49</b>	3990-700 <b>1510.06</b>
14X12	3790-702 <b>1236.07</b>	3990-702 <b>1815.20</b>
16	3790-160 <b>1901.65</b>	3990-160 <b>2336.91</b>
16X2	3790-751 <b>852.23</b>	3990-751 <b>1320.58</b>
16X3	3790-753 <b>860.58</b>	3990-753 <b>1373.81</b>
16X4	3790-754 <b>879.94</b>	3990-754 <b>1416.93</b>
16X6	3790-756 <b>935.36</b>	3990-756 <b>1499.22</b>
16X8	3790-758 <b>1031.55</b>	3990-758 <b>1678.87</b>
16X10	3790-760 <b>1165.66</b>	3990-760 <b>1855.29</b>
16X12	3790-762 <b>1251.51</b>	3990-762 <b>1994.52</b>
16X14	3790-764 <b>1499.99</b>	3990-764 <b>2176.17</b>
18	3790-180 <b>1947.51</b>	3990-180 <b>3777.64</b>
18X4	3790-784 <b>1037.83</b>	3990-784 <b>1642.01</b>
18X6	3790-786 <b>1113.07</b>	3990-786 <b>1741.66</b>
18X8	3790-788 <b>1396.35</b>	3990-788 <b>1942.15</b>
18X10	3790-790 <b>1588.86</b>	3990-790 <b>2096.08</b>
18X12	3790-792 <b>1632.18</b>	3990-792 <b>2729.81</b>
18X14	3790-794 <b>1860.68</b>	3990-794 <b>2807.69</b>
18X16	3790-796 <b>2008.71</b>	3990-796 <b>3440.89</b>
20	3790-200 <b>2630.81</b>	3990-200 <b>6935.37</b>
20X4	3790-814 <b>1098.66</b>	3990-814 <b>1841.02</b>
20X6	3790-816 <b>1257.14</b>	3990-816 <b>2000.35</b>
20X8	3790-818 <b>1356.05</b>	3990-818 <b>2541.22</b>



Size	SCH 40 DWV	SCH 80 DWV
	Prod Code: 390	Prod Code: 400
	Part Number MSRP	Part Number MSRP

**SANITARY TEE (Socket x Socket x Socket) (continued)**

20X10	3790-820 <b>1529.93</b>	3990-820 <b>2825.28</b>
20X12	3790-822 <b>1713.05</b>	3990-822 <b>3340.38</b>
20X14	3790-824 <b>2037.22</b>	3990-824 <b>3623.81</b>
20X16	3790-826 <b>2348.93</b>	3990-826 <b>4712.05</b>
20X18	3790-828 <b>2531.13</b>	3990-828 <b>6523.28</b>
24	3790-240 <b>3442.12</b>	3990-240 <b>7442.62</b>
24X4	3790-904 <b>1608.77</b>	3990-904 <b>2966.79</b>
24X6	3790-906 <b>1786.09</b>	3990-906 <b>3110.55</b>
24X8	3790-908 <b>2370.48</b>	3990-908 <b>3254.27</b>
24X10	3790-910 <b>2563.02</b>	3990-910 <b>3897.92</b>
24X12	3790-912 <b>2678.17</b>	3990-912 <b>4197.91</b>
24X14	3790-914 <b>2732.22</b>	3990-914 <b>5060.63</b>
24X16	3790-916 <b>3133.41</b>	3990-916 <b>5809.24</b>
24X18	3790-918 <b>3284.69</b>	3990-918 <b>6680.72</b>
24X20	3790-920 <b>3403.33</b>	3990-920 <b>7056.34</b>



**Adapters**

Size	SCH 40 DWV	SCH 80 DWV
	Prod Code: 399	Prod Code: 400
	Part Number MSRP	Part Number MSRP

**IPS x SEWER ADAPTER (Socket x Spigot)**

4	3729-04013IXS <b>18.43</b>	---
6	3729-06013IXS <b>38.89</b>	---
8	3729-08013IXS <b>75.29</b>	---
10	3729-10013IXS <b>203.88</b>	---
12	3729-12013IXS <b>221.82</b>	---

**IPS x SEWER ADAPTER (Socket x Socket)**

4	3729-040IXS <b>31.69</b>	---
6	3729-060IXS <b>57.91</b>	---
8	3729-080IXS <b>93.04</b>	---



**Drain, Waste & Vent (DWV) Product**  
**PVC Schedule 40 & 80 DWV Fabricated Fittings**




**Adapters**

	Size	SCH 40 DWV	SCH 80 DWV
		Prod Code: 399	Prod Code: 400
		Part Number MSRP	Part Number MSRP

**IPS x SEWER ADAPTER (Socket x Socket) (continued)**

	10	3729-100IXS 150.45	---
	12	3729-120IXS 222.67	---


**IPS x SEWER ADAPTER (Spigot x Socket)**

	4	3729-04031IXS 24.19	---
	6	3729-06031IXS 56.01	---
	8	3729-08031IXS 91.74	---
	10	3729-10031IXS 142.81	---
	12	3729-12031IXS 212.12	---

**Caps**


	Size	SCH 40 DWV	SCH 80 DWV
		Prod Code: 390	Prod Code: 400
		Part Number MSRP	Part Number MSRP

**CAP (Socket)**

	4	3747-040 39.77	3947-040 48.27
	6	3747-060 49.64	3947-060 122.03
	8	3747-080 86.26	3947-080 157.35
	10	3747-100 123.15	3947-100 240.46
	12	3747-120 155.52	3947-120 416.31
	14	3747-140 264.43	3947-140 472.15
	16	3747-160 338.51	3947-160 623.16
	18	3747-180 374.56	3947-180 818.72
	20	3747-200 659.77	3947-200 946.09
	24	3747-240 975.25	3947-240 1097.80


**Plugs**

**SPIGOT PLUG (Spigot)**

	6	3749-060 47.60	3949-060 143.97
	8	3749-080 121.59	3949-080 242.99
	10	3749-100 138.66	3949-100 307.21

	Size	SCH 40 DWV	SCH 80 DWV
		Prod Code: 390	Prod Code: 400
		Part Number MSRP	Part Number MSRP

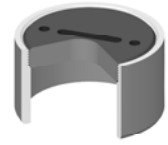
**SPIGOT PLUG (Spigot) (continued)**

	12	3749-120 198.75	3949-120 489.15
	14	3749-140 337.20	3949-140 665.82
	16	3749-160 410.88	3949-160 711.54

**Cleanouts**

**Cleanout Adapter W/Plug (Spigot x Cleanout)**

SOLD AS SET ONLY (Non-Pressure Rated)

	2	---	3978-020 101.72
	3	---	3978-030 130.32
	4	---	3978-040 163.77
	5	---	3978-050 174.08
	6	---	3978-060 184.42
	8	---	3978-080 293.36
	10	---	3978-100* 489.93
	12	---	3978-120* 684.02
	14	---	3978-140* 848.24
	16	---	3978-160 1668.37
	18	---	3978-180 1997.74
	20	---	3978-200 2113.35
24	---	3978-240 2454.96	

Cleanouts Have HDPE Plug

**Glue-On Saddles**

Part Number	Size	Std Pk	Mstr Ctn	Prod Code	MSRP
-------------	------	--------	----------	-----------	------

**Saddle**

**IPS O.D.x Socket Schedule 40**



Non Pressure Rated

3763-528	6X2	1	10	390	37.72
3763-530	6X3	1	10	390	38.61
3763-532	6X4	1	8	390	40.16
3763-578	8X2	1	10	390	55.59
3763-580	8X3	1	10	390	56.14
3763-582	8X4	1	10	390	56.82
3763-585	8X6	1	10	390	58.43



**Drain, Waste & Vent (DWV) Product**  
**PVC Schedule 40 & 80 DWV Fabricated Fittings**

**Glue-On Saddles**

Part Number	Size	Std Pk	Mstr Ctn	Prod Code	MSRP
<b>Saddle (continued)</b>					
<b>IPS O.D.x Socket Schedule 40</b>					
3763-621	10X2	1	5	390	70.25
3763-623	10X3	1	10	390	71.23
3763-624	10X4	1	8	390	71.53
3763-626	10X6	1	5	390	83.71
3763-628	10X8	1	5	390	134.33
3763-661	12X2	1	5	390	83.08
3763-663	12X3	1	10	390	84.62
3763-664	12X4	1	10	390	86.43
3763-666	12X6	1	4	390	100.23
3763-668	12X8	1	5	390	159.79
3763-670	12X10	1	4	390	231.06
3763-691	14X2	1	10	390	106.48
3763-693	14X3	1	8	390	113.80
3763-694	14X4	1	5	390	121.56
3763-696	14X6	1	8	390	124.00
3763-698	14X8	1	4	390	190.28
3763-700	14X10	1	3	390	244.78
3763-702	14X12	1	0	390	269.81
3763-751	16X2	1	10	390	113.33
3763-753	16X3	1	5	390	114.88
3763-754	16X4	1	10	390	125.05
3763-756	16X6	1	3	390	133.62
3763-758	16X8	1	3	390	198.60
3763-760	16X10	1	0	390	252.42
3763-762	16X12	1	0	390	279.74
3763-764	16X14	1	0	390	290.79
3763-781	18X2	1	10	390	166.13
3763-783	18X3	1	5	390	169.36
3763-784	18X4	1	5	390	171.95
3763-786	18X6	1	4	390	183.08
3763-788	18X8	1	0	390	267.15
3763-790	18X10	1	0	390	296.15
3763-792	18X12	1	0	390	304.33
3763-794	18X14	1	0	390	459.76
3763-796	18X16	1	0	390	600.19
3763-811	20X2	1	12	390	166.52
3763-813	20X3	1	5	390	168.80
3763-814	20X4	1	6	390	177.04
3763-816	20X6	1	0	390	184.91
3763-818	20X8	1	5	390	266.80
3763-820	20X10	1	0	390	296.16
3763-822	20X12	1	0	390	422.23
3763-824	20X14	1	0	390	460.71
3763-826	20X16	1	0	390	602.39
3763-828	20X18	1	0	390	682.69
3763-901	24X2	1	5	390	158.85
3763-903	24X3	1	5	390	175.58
3763-904	24X4	1	5	390	177.53
3763-906	24X6	1	5	390	188.34
3763-908	24X8	1	5	390	269.27
3763-910	24X10	1	0	390	299.54

Part Number	Size	Std Pk	Mstr Ctn	Prod Code	MSRP
<b>Saddle (continued)</b>					
<b>IPS O.D.x Socket Schedule 40</b>					
3763-912	24X12	1	0	390	423.73
3763-914	24X14	1	0	390	474.49
3763-916	24X16	1	0	390	533.27
3763-918	24X18	1	0	390	718.67
3763-920	24X20	1	0	390	804.66

**Saddle**



**IPS O.D. x Socket Schedule 80**

**Non Pressure Rated**

3963-528	6X2	1	6	400	63.39
3963-530	6X3	1	10	400	63.96
3963-532	6X4	1	8	400	64.51
3963-578	8X2	1	10	400	89.55
3963-580	8X3	1	10	400	90.64
3963-582	8X4	1	5	400	91.61
3963-585	8X6	1	5	400	93.75
3963-621	10X2	1	8	400	82.92
3963-623	10X3	1	5	400	84.08
3963-624	10X4	1	8	400	84.44
3963-626	10X6	1	5	400	98.19
3963-628	10X8	1	5	400	157.36
3963-661	12X2	1	10	400	97.96
3963-663	12X3	1	8	400	98.54
3963-664	12X4	1	10	400	99.37
3963-666	12X6	1	5	400	115.24
3963-668	12X8	1	2	400	181.35
3963-670	12X10	1	4	400	221.96
3963-691	14X2	1	10	400	120.64
3963-693	14X3	1	8	400	121.77
3963-694	14X4	1	5	400	122.36
3963-696	14X6	1	8	400	139.28
3963-698	14X8	1	4	400	213.53
3963-700	14X10	1	3	400	273.44
3963-702	14X12	1	4	400	301.93
3963-751	16X2	1	10	400	127.04
3963-753	16X3	1	8	400	128.15
3963-754	16X4	1	10	400	128.87
3963-756	16X6	1	8	400	146.88
3963-758	16X8	1	3	400	219.03
3963-760	16X10	1	0	400	278.91
3963-762	16X12	1	0	400	309.77
3963-764	16X14	1	0	400	322.80
3963-781	18X2	1	10	400	186.64
3963-783	18X3	1	4	400	187.77
3963-784	18X4	1	5	400	188.62
3963-786	18X6	1	5	400	199.63
3963-788	18X8	1	5	400	293.32
3963-790	18X10	1	0	400	325.17
3963-792	18X12	1	0	400	463.74
3963-794	18X14	1	0	400	504.72
3963-796	18X16	1	0	400	660.43
3963-811	20X2	1	12	400	188.77

**Drain, Waste & Vent (DWV) Product**  
**PVC Schedule 40 & 80 DWV Fabricated Fittings**



**Glue-On Saddles**

Part Number	Size	Std Pk	Mstr Ctn	Prod Code	MSRP
<b>Saddle (continued)</b>					
<b>IPS O.D. x Socket Schedule 80</b>					
3963-813	20X3	1	4	400	189.21
3963-814	20X4	1	6	400	191.48
3963-816	20X6	1	0	400	200.86
3963-818	20X8	1	5	400	290.15
3963-820	20X10	1	0	400	321.77
3963-822	20X12	1	0	400	458.97
3963-824	20X14	1	0	400	500.57
3963-826	20X16	1	0	400	655.83
3963-828	20X18	1	0	400	744.66
3963-901	24X2	1	5	400	192.07
3963-903	24X3	1	5	400	193.09
3963-904	24X4	1	5	400	193.98
3963-906	24X6	1	5	400	202.41
3963-908	24X8	1	5	409	287.56
3963-910	24X10	1	5	400	323.16
3963-912	24X12	1	0	409	451.25
3963-914	24X14	1	0	400	498.82
3963-916	24X16	1	0	400	682.75
3963-918	24X18	1	0	400	769.91
3963-920	24X20	1	0	400	866.53

**Stub Saddle**



**IPS O.D. x Socket Schedule 40**

**Non Pressure Rated**

3765-528	6X2	1	8	390	40.56
3765-530	6X3	1	4	390	41.52
3765-532	6X4	1	10	390	43.19
3765-578	8X2	1	10	390	59.78
3765-580	8X3	1	4	390	60.36
3765-582	8X4	1	8	390	61.09
3765-585	8X6	1	4	390	62.83
3765-621	10X2	1	5	390	75.53
3765-623	10X3	1	5	390	76.60
3765-624	10X4	1	4	390	97.07
3765-626	10X6	1	2	390	90.01
3765-628	10X8	1	2	390	144.43
3765-661	12X2	1	6	390	89.33
3765-663	12X3	1	5	390	90.99
3765-664	12X4	1	2	390	92.93
3765-666	12X6	1	2	390	107.71
3765-668	12X8	1	2	390	171.82
3765-670	12X10	1	2	390	248.45
3765-691	14X2	1	10	390	114.49
3765-693	14X3	1	2	390	115.79
3765-694	14X4	1	5	390	117.24
3765-696	14X6	1	3	390	133.34
3765-698	14X8	1	0	390	203.27
3765-700	14X10	1	0	390	263.20
3765-702	14X12	1	0	390	290.13

Part Number	Size	Std Pk	Mstr Ctn	Prod Code	MSRP
-------------	------	--------	----------	-----------	------

**Stub Saddle (continued)**

**IPS O.D. x Socket Schedule 40**

3765-751	16X2	1	4	390	121.85
3765-753	16X3	1	5	390	123.53
3765-754	16X4	1	5	390	125.40
3765-756	16X6	1	2	390	143.66
3765-758	16X8	1	0	390	213.55
3765-760	16X10	1	0	390	271.42
3765-762	16X12	1	0	390	300.79
3765-764	16X14	1	0	390	312.67
3765-781	18X2	1	4	390	178.61
3765-783	18X3	1	10	390	140.47
3765-784	18X4	1	10	390	184.88
3765-786	18X6	1	2	390	196.86
3765-788	18X8	1	0	390	287.24
3765-790	18X10	1	0	390	318.43
3765-792	18X12	1	0	390	327.22
3765-794	18X14	1	0	390	494.35
3765-796	18X16	1	0	390	644.82
3765-811	20X2	1	0	390	179.04
3765-813	20X3	1	2	390	181.51
3765-814	20X4	1	2	390	190.37
3765-816	20X6	1	0	390	198.83
3765-818	20X8	1	0	390	286.88
3765-820	20X10	1	0	390	318.44
3765-822	20X12	1	0	390	454.03
3765-824	20X14	1	0	390	495.39
3765-826	20X16	1	0	390	647.73
3765-828	20X18	1	0	390	734.08
3765-901	24X2	1	5	390	170.79
3765-903	24X3	1	2	390	188.78
3765-904	24X4	1	4	390	190.89
3765-906	24X6	1	3	390	202.52
3765-908	24X8	1	0	390	289.54
3765-910	24X10	1	0	390	322.06
3765-912	24X12	1	0	390	455.61
3765-914	24X14	1	0	390	510.22
3765-916	24X16	1	0	390	573.42
3765-918	24X18	1	0	390	772.75
3765-920	24X20	1	0	390	865.23

**Stub Saddle**



**IPS O.D. x Socket Schedule 80**

**Non Pressure Rated**

3965-528	6X2	1	8	400	68.17
3965-530	6X3	1	3	400	68.76
3965-532	6X4	1	10	400	69.38
3965-578	8X2	1	5	409	95.28
3965-580	8X3	1	4	400	97.46
3965-582	8X4	1	6	400	98.51
3965-585	8X6	1	4	400	100.81
3965-621	10X2	1	6	400	89.17
3965-623	10X3	1	6	409	89.47
3965-624	10X4	1	4	400	90.80



Drain, Waste & Vent (DWV) Product  
**PVC Schedule 40 & 80 DWV Fabricated Fittings**

**Glue-On Saddles**

Part Number	Size	Std Pk	Mstr Ctn	Prod Code	MSRP
-------------	------	--------	----------	-----------	------

**Stub Saddle (continued)**

**IPS O.D.x Socket Schedule 80**

3965-626	10X6	1	4	400	105.57
3965-628	10X8	1	2	400	169.20
3965-661	12X2	1	4	400	105.33
3965-663	12X3	1	4	400	106.45
3965-664	12X4	1	2	400	106.85
3965-666	12X6	1	2	400	123.93
3965-668	12X8	1	2	400	195.00
3965-670	12X10	1	2	400	286.05
3965-691	14X2	1	6	400	129.74
3965-693	14X3	1	4	400	130.95
3965-694	14X4	1	5	400	131.56
3965-696	14X6	1	2	400	149.76
3965-700	14X10	1	0	400	294.03
3965-702	14X12	1	0	400	324.64
3965-751	16X2	1	5	400	136.60
3965-753	16X3	1	4	400	137.78
3965-754	16X4	1	3	400	138.56
3965-756	16X6	1	2	400	157.93
3965-758	16X8	1	3	400	235.53
3965-760	16X10	1	3	400	299.92
3965-762	16X12	1	0	400	333.08
3965-764	16X14	1	0	400	347.12
3965-781	18X2	1	2	400	200.67
3965-783	18X3	1	0	400	201.89
3965-784	18X4	1	0	400	202.81
3965-786	18X6	1	2	400	214.66
3965-788	18X8	1	0	400	315.39
3965-790	18X10	1	0	400	349.64
3965-792	18X12	1	0	400	498.64
3965-794	18X14	1	0	400	542.72
3965-796	18X16	1	0	400	710.14
3965-811	20X2	1	4	400	202.97
3965-813	20X3	1	2	400	203.44
3965-814	20X4	1	4	400	205.88
3965-816	20X6	1	0	400	215.97
3965-818	20X8	1	0	400	311.99
3965-820	20X10	1	0	400	345.99
3965-822	20X12	1	0	400	493.52
3965-824	20X14	1	0	400	538.24
3965-826	20X16	1	0	400	705.22
3965-828	20X18	1	0	400	800.72
3965-901	24X2	1	5	400	206.53
3965-903	24X3	1	2	400	207.62
3965-904	24X4	1	5	400	208.58
3965-906	24X6	1	3	400	217.66
3965-908	24X8	1	0	400	312.48
3965-910	24X10	1	0	400	347.49
3965-912	24X12	1	0	409	485.24
3965-914	24X14	1	0	400	536.37
3965-916	24X16	1	0	400	734.14
3965-918	24X18	1	0	400	827.85

Part Number	Size	Std Pk	Mstr Ctn	Prod Code	MSRP
-------------	------	--------	----------	-----------	------

**Stub Saddle (continued)**

**IPS O.D.x Socket Schedule 80**

3965-920	24X20	1	0	400	931.75
----------	-------	---	---	-----	--------