



**Double Containment Product**  
**90° Ells & 45° Ells**

**90° Ells**

**DC 90° EII CPVC Sch 80 x PVC Sch 40**

Part Number	Size	Std Pk	Mstr Ctn	Prod Code	MSRP
DC06-C005-A020	<b>1/2X2</b>	1	8	470	54.54
DC06-C007-A030	<b>3/4X3</b>	1	5	470	71.86
DC06-C010-A030	<b>1X3</b>	1	5	470	83.61
DC06-C015-A040	<b>1-1/2X4</b>	1	8	470	135.84
DC06-C020-A040	<b>2X4</b>	1	5	470	163.94
DC06-C030-A060	<b>3X6</b>	1	5	470	318.57
DC06-C040-A080	<b>4X8</b>	1	2	470	612.73
DC06-C060-A100	<b>6X10</b>	1	0	470	1626.96
DC06-C080-A120	<b>8X12</b>	1	0	470	3121.56

**DC 90° EII CPVC Sch 80 x PVC Sch 80**

Part Number	Size	Std Pk	Mstr Ctn	Prod Code	MSRP
DC06-C005-B020	<b>1/2X2</b>	1	25	470	62.91
DC06-C007-B030	<b>3/4X3</b>	1	5	470	89.76
DC06-C010-B030	<b>1X3</b>	1	5	470	115.41
DC06-C015-B040	<b>1-1/2X4</b>	1	4	470	159.06
DC06-C020-B040	<b>2X4</b>	1	4	470	187.15
DC06-C030-B060	<b>3X6</b>	1	0	470	417.69
DC06-C040-B080	<b>4X8</b>	1	2	470	785.76
DC06-C060-B100	<b>6X10</b>	1	0	470	2554.64
DC06-C080-B120	<b>8X12</b>	1	0	470	4300.26

**DC 90° EII CPVC Sch 80 x CPVC Sch 80**

Part Number	Size	Std Pk	Mstr Ctn	Prod Code	MSRP
DC06-C005-C020	<b>1/2X2</b>	1	25	470	88.01
DC06-C007-C030	<b>3/4X3</b>	1	10	470	155.38
DC06-C010-C030	<b>1X3</b>	1	5	470	166.69
DC06-C015-C040	<b>1-1/2X4</b>	1	5	470	294.05
DC06-C020-C040	<b>2X4</b>	1	4	470	313.80
DC06-C030-C060	<b>3X6</b>	1	2	470	547.21
DC06-C040-C080	<b>4X8</b>	1	2	470	1263.15
DC06-C060-C100	<b>6X10</b>	1	0	470	3128.45
DC06-C080-C120	<b>8X12</b>	1	0	470	5162.69

**DC 90° EII CPVC Sch 80 x PVC Sch 40 Clear**

Part Number	Size	Std Pk	Mstr Ctn	Prod Code	MSRP
DC06-C005-G020	<b>1/2X2</b>	1	23	470	115.14
DC06-C007-G030	<b>3/4X3</b>	1	4	470	292.29
DC06-C010-G030	<b>1X3</b>	1	5	470	303.60
DC06-C015-G040	<b>1-1/2X4</b>	1	8	470	529.78
DC06-C020-G040	<b>2X4</b>	1	8	470	557.75
DC06-C030-G060	<b>3X6</b>	1	5	470	1033.06
DC06-C040-G080	<b>4X8</b>	1	2	470	1761.11

**45° Ells**



DC 45° Ells are made from standard Spears® pressure fittings in designated material and Schedule selected. Included are separate internal Carrier and external Containment fittings of the same configuration. Carrier fittings are equipped with extenders to facilitate cement assembly. See *Double Containment Design & Installation Guide* for proper installation.

Centralizers are used inside the Containment piping system, but not inside fittings, installed on Carrier pipe and must be ordered separately according to same Carrier x Containment size and pipe schedule selected.

**DC 45° EII PVC Sch 40 x PVC Sch 40**

Part Number	Size	Std Pk	Mstr Ctn	Prod Code	MSRP
DC17-A005-A020	<b>1/2X2</b>	1	25	470	37.39
DC17-A007-A030	<b>3/4X3</b>	1	5	470	52.81
DC17-A010-A030	<b>1X3</b>	1	5	470	54.08
DC17-A015-A040	<b>1-1/2X4</b>	1	5	470	71.86
DC17-A020-A040	<b>2X4</b>	1	4	470	88.59
DC17-A030-A060	<b>3X6</b>	2	0	470	165.55
DC17-A040-A080	<b>4X8</b>	1	3	470	307.67
DC17-A060-A100	<b>6X10</b>	1	0	470	732.88
DC17-A080-A120	<b>8X12</b>	1	0	470	1205.75

**DC 45° EII PVC Sch 40 x PVC Sch 40 Clear**

Part Number	Size	Std Pk	Mstr Ctn	Prod Code	MSRP
DC17-A005-G020	<b>1/2X2</b>	1	25	470	117.09
DC17-A007-G030	<b>3/4X3</b>	1	8	470	338.64
DC17-A010-G030	<b>1X3</b>	1	5	470	339.83
DC17-A015-G040	<b>1-1/2X4</b>	1	5	470	598.96
DC17-A020-G040	<b>2X4</b>	1	4	470	602.03
DC17-A030-G060	<b>3X6</b>	1	2	470	1066.91
DC17-A040-G080	<b>4X8</b>	1	3	470	1286.58

**DC 45° EII PVC Sch 80 x PVC Sch 40**

Part Number	Size	Std Pk	Mstr Ctn	Prod Code	MSRP
DC17-B005-A020	<b>1/2X2</b>	1	25	470	53.81
DC17-B007-A030	<b>3/4X3</b>	1	8	470	76.89
DC17-B010-A030	<b>1X3</b>	1	10	470	82.37
DC17-B015-A040	<b>1-1/2X4</b>	1	5	470	116.42

**Double Containment Product**  
**45° Ells & Couplings**



**45° Ells**

**DC 45° EII PVC Sch 80 x PVC Sch 40 (continued)**

Part Number	Size	Std Pk	Mstr Ctn	Prod Code	MSRP
DC17-B020-A040	<b>2X4</b>	1	5	470	139.17
DC17-B030-A060	<b>3X6</b>	1	7	470	291.77
DC17-B040-A080	<b>4X8</b>	1	2	470	493.15
DC17-B060-A100	<b>6X10</b>	1	0	470	981.86
DC17-B080-A120	<b>8X12</b>	1	0	470	1521.49

**DC 45° EII PVC Sch 80 x PVC Sch 40 Clear**

Part Number	Size	Std Pk	Mstr Ctn	Prod Code	MSRP
DC17-B005-G020	<b>1/2X2</b>	1	10	470	125.45
DC17-B007-G030	<b>3/4X3</b>	1	8	470	362.74
DC17-B010-G030	<b>1X3</b>	1	5	470	369.71
DC17-B015-G040	<b>1-1/2X4</b>	1	5	470	631.72
DC17-B020-G040	<b>2X4</b>	1	5	470	652.61
DC17-B030-G060	<b>3X6</b>	1	4	470	1193.01
DC17-B040-G080	<b>4X8</b>	1	3	470	1971.62

**DC 45° EII PVC Sch 80 x PVC Sch 80**

Part Number	Size	Std Pk	Mstr Ctn	Prod Code	MSRP
DC17-B005-B020	<b>1/2X2</b>	1	10	470	79.12
DC17-B007-B030	<b>3/4X3</b>	1	8	470	132.57
DC17-B010-B030	<b>1X3</b>	1	5	470	143.60
DC17-B015-B040	<b>1-1/2X4</b>	1	5	470	216.81
DC17-B020-B040	<b>2X4</b>	1	5	470	225.47
DC17-B030-B060	<b>3X6</b>	1	2	470	376.03
DC17-B040-B080	<b>4X8</b>	1	2	470	656.73
DC17-B060-B100	<b>6X10</b>	1	0	470	1611.12
DC17-B080-B120	<b>8X12</b>	1	0	470	2227.44

**DC 45° EII CPVC Sch 80 x PVC Sch 40**

Part Number	Size	Std Pk	Mstr Ctn	Prod Code	MSRP
DC17-C005-A020	<b>1/2X2</b>	1	25	470	56.59
DC17-C007-A030	<b>3/4X3</b>	1	8	470	79.83
DC17-C010-A030	<b>1X3</b>	1	10	470	93.02
DC17-C015-A040	<b>1-1/2X4</b>	1	5	470	148.75
DC17-C020-A040	<b>2X4</b>	1	5	470	174.58
DC17-C030-A060	<b>3X6</b>	1	5	470	285.93
DC17-C040-A080	<b>4X8</b>	1	3	470	570.68
DC17-C060-A100	<b>6X10</b>	1	0	470	1438.98
DC17-C080-A120	<b>8X12</b>	1	0	470	2884.31

**DC 45° EII CPVC Sch 80 x PVC Sch 80**

Part Number	Size	Std Pk	Mstr Ctn	Prod Code	MSRP
DC17-C005-B020	<b>1/2X2</b>	1	25	470	81.14
DC17-C007-B030	<b>3/4X3</b>	1	5	470	135.49
DC17-C010-B030	<b>1X3</b>	1	5	470	148.25
DC17-C015-B040	<b>1-1/2X4</b>	1	4	470	169.03
DC17-C020-B040	<b>2X4</b>	1	5	470	195.07
DC17-C030-B060	<b>3X6</b>	1	5	470	402.44
DC17-C040-B080	<b>4X8</b>	1	2	470	733.75
DC17-C060-B100	<b>6X10</b>	1	0	470	2065.44
DC17-C080-B120	<b>8X12</b>	1	0	470	3590.25

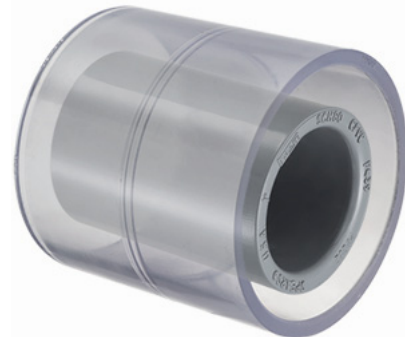
**DC 45° EII CPVC Sch 80 x CPVC Sch 80**

Part Number	Size	Std Pk	Mstr Ctn	Prod Code	MSRP
DC17-C005-C020	<b>1/2X2</b>	1	10	470	92.27
DC17-C007-C030	<b>3/4X3</b>	1	8	470	166.74
DC17-C010-C030	<b>1X3</b>	1	10	470	179.92
DC17-C015-C040	<b>1-1/2X4</b>	1	5	470	259.99
DC17-C020-C040	<b>2X4</b>	1	5	470	286.03
DC17-C030-C060	<b>3X6</b>	1	2	470	649.68
DC17-C040-C080	<b>4X8</b>	1	2	470	1299.19
DC17-C060-C100	<b>6X10</b>	1	0	470	3935.39
DC17-C080-C120	<b>8X12</b>	1	0	470	5406.85

**DC 45° EII CPVC Sch 80 x PVC Sch 40 Clear**

Part Number	Size	Std Pk	Mstr Ctn	Prod Code	MSRP
DC17-C005-G020	<b>1/2X2</b>	1	10	470	127.36
DC17-C007-G030	<b>3/4X3</b>	1	8	470	365.66
DC17-C010-G030	<b>1X3</b>	1	10	470	378.83
DC17-C015-G040	<b>1-1/2X4</b>	1	5	470	676.16
DC17-C020-G040	<b>2X4</b>	1	5	470	688.24
DC17-C030-G060	<b>3X6</b>	1	5	470	1281.75
DC17-C040-G080	<b>4X8</b>	1	3	470	2168.68

**Couplings**



DC Couplings are made from standard Spears® pressure fittings in designated material and Schedule selected. Included are separate internal Carrier and external Containment fittings of the same configuration. Carrier fittings are equipped with extenders to facilitate cement assembly. See *Double Containment Design & Installation Guide* for proper installation.

Centralizers are used inside the Containment piping system, but not inside fittings, installed on Carrier pipe and must be ordered separately according to same Carrier x Containment size and pipe schedule selected.

**DC Coupling PVC Sch 40 x PVC Sch 40**

Part Number	Size	Std Pk	Mstr Ctn	Prod Code	MSRP
DC29-A005-A020	<b>1/2X2</b>	1	25	470	7.13
DC29-A007-A030	<b>3/4X3</b>	1	10	470	9.01
DC29-A010-A030	<b>1X3</b>	1	10	470	9.47
DC29-A015-A040	<b>1-1/2X4</b>	1	6	470	13.71
DC29-A020-A040	<b>2X4</b>	1	10	470	14.55