



## PRODUCT INFORMATION

### APPLICATION

Spears® Copper Tube Size (CTS) fittings are manufactured from chlorinated polyvinyl chloride (CPVC) for use with SDR-11 piping systems of CTS outside diameter in hot and cold water distribution systems. Check state and local codes for application and restrictions.

### CONFORMANCE STANDARDS

Spears® CPVC CTS fittings conform to ASTM D 2846 Specification for Chlorinated Poly (Vinyl Chloride) (CPVC) Plastic Hot and Cold Water Distribution Systems.

### WORKING PRESSURE

Spears® CPVC CTS fittings have a continuous working pressure rating of 100 psi at 180°F (82°C) [400 psi at 73°F (23°C)].

### PRODUCT CERTIFICATION

Spears® CPVC CTS fittings and Special Reinforced (SR) Thread transition adapters are tested and certified by the National Sanitation Foundation (NSF®) to ASTM D 2846 for use in Hot and Cold Water Distribution Systems, and for safe use in potable water systems under NSF® Standard 14/61.

### TESTING

Once the system has been installed and allowed to cure properly, the system shall be tested in accordance with applicable code requirements. When testing with water (hydrostatic testing), the system must be slowly filled with water and the air bled from the highest and furthest points in the system before test pressure is applied. Failure to do so can cause damage to the piping system and could be harmful to the job site personnel should a failure occur. If a leak is found, the affected product must be cut out and discarded. A new section can be installed using couplings or other approved means.

Part Number	Size	Std Pk	Mstr Ctn	Prod Code	MSRP
-------------	------	--------	----------	-----------	------

### Tee

#### Socket x Socket x Socket



NSF® Certified Lead Free

Part Number	Size	Std Pk	Mstr Ctn	Prod Code	MSRP
4101-005	1/2	100	500	035	1.02
4101-007	3/4	50	250	035	1.90
4101-010	1	10	100	035	9.53
4101-012	1-1/4	10	100	035	14.69
4101-015	1-1/2	5	50	035	19.13
4101-020	2	5	25	035	30.93

### Tee - Reducing

#### Socket x Socket x Socket



NSF® Certified Lead Free

Part Number	Size	Std Pk	Mstr Ctn	Prod Code	MSRP
4101-074	1/2X1/2X3/4	10	100	035	3.53
4101-094	3/4X1/2X1/2	50	250	035	1.89
4101-095	3/4X1/2X3/4	25	250	035	2.58
4101-101	3/4X3/4X1/2	50	250	035	1.97
4101-102 <sup>1</sup>	3/4X3/4X1	10	100	035	21.11
4101-120 <sup>1</sup>	1X1/2X1/2	10	100	035	22.75
4101-121 <sup>1</sup>	1X1/2X3/4	10	100	035	23.37
4101-122 <sup>1</sup>	1X1/2X1	10	100	035	17.81
4101-124 <sup>1</sup>	1X3/4X1/2	10	100	035	21.24
4101-125	1X3/4X3/4	10	100	035	11.61
4101-126 <sup>1</sup>	1X3/4X1	10	100	035	17.00
4101-130	1X1X1/2	10	100	035	10.87
4101-131	1X1X3/4	10	100	035	10.37
4101-138 <sup>1</sup>	1-1/4X1/2X1/2	10	80	035	26.52
4101-139 <sup>1</sup>	1-1/4X1/2X3/4	10	80	035	26.52

Part Number	Size	Std Pk	Mstr Ctn	Prod Code	MSRP
-------------	------	--------	----------	-----------	------

### Tee - Reducing (continued)

#### Socket x Socket x Socket

4101-142 <sup>1</sup>	1-1/4X1/2X1-1/4	10	80	035	26.52
4101-146 <sup>1</sup>	1-1/4X3/4X1/2	10	80	035	26.52
4101-147 <sup>1</sup>	1-1/4X3/4X3/4	10	80	035	23.69
4101-148 <sup>1</sup>	1-1/4X3/4X1	10	80	035	25.68
4101-149 <sup>1</sup>	1-1/4X3/4X1-1/4	10	80	035	23.60
4101-156 <sup>1</sup>	1-1/4X1X1/2	10	80	035	25.08
4101-157 <sup>1</sup>	1-1/4X1X3/4	10	80	035	24.01
4101-158 <sup>1</sup>	1-1/4X1X1	10	100	035	24.65
4101-159 <sup>1</sup>	1-1/4X1X1-1/4	10	80	035	27.65
4101-166	1-1/4X1-1/4X1/2	10	100	035	26.52
4101-168	1-1/4X1-1/4X1	10	100	035	24.95
4101-167	1-1/4X1-1/4X3/4	10	100	035	23.60
4101-169 <sup>1</sup>	1-1/4X1-1/4X1-1/2	5	40	035	26.52
4101-173 <sup>1</sup>	1-1/2X1/2X1/2	5	40	035	32.13
4101-174 <sup>1</sup>	1-1/2X1/2X3/4	5	40	035	32.13
4101-175 <sup>1</sup>	1-1/2X1/2X1	5	40	035	32.13
4101-176 <sup>1</sup>	1-1/2X1/2X1-1/4	5	40	035	32.13
4101-177 <sup>1</sup>	1-1/2X1/2X1-1/2	5	40	035	32.13
4101-182 <sup>1</sup>	1-1/2X3/4X1/2	5	40	035	32.13
4101-184 <sup>1</sup>	1-1/2X3/4X3/4	5	40	035	32.13
4101-185 <sup>1</sup>	1-1/2X3/4X1	5	40	035	32.13
4101-186 <sup>1</sup>	1-1/2X3/4X1-1/4	5	40	035	32.13
4101-188 <sup>1</sup>	1-1/2X3/4X1-1/2	5	40	035	32.13
4101-193 <sup>1</sup>	1-1/2X1X1/2	5	40	035	32.13
4101-194 <sup>1</sup>	1-1/2X1X3/4	5	40	035	32.13
4101-195 <sup>1</sup>	1-1/2X1X1	10	100	035	32.13
4101-196 <sup>1</sup>	1-1/2X1X1-1/4	5	40	035	32.13
4101-197 <sup>1</sup>	1-1/2X1X1-1/2	5	40	035	32.13
4101-199 <sup>1</sup>	1-1/2X1-1/4X1/2	5	40	035	32.13
4101-201 <sup>1</sup>	1-1/2X1-1/4X3/4	5	40	035	32.13
4101-202 <sup>1</sup>	1-1/2X1-1/4X1	5	40	035	32.13



**CTS CPVC Product**  
**EverTUFF® CPVC CTS Products**

Part Number	Size	Std Pk	Mstr Ctn	Prod Code	MSRP
-------------	------	--------	----------	-----------	------

**Tee - Reducing (continued)**

**Socket x Socket x Socket**

4101-203 <sup>1</sup>	1-1/2X1-1/4X1-1/4	5	40	035	32.13
4101-204 <sup>1</sup>	1-1/2X1-1/4X1-1/2	5	40	035	32.13
4101-209	1-1/2X1-1/2X1/2	10	50	035	28.55
4101-210	1-1/2X1-1/2X3/4	10	100	035	23.80
4101-211	<b>1-1/2X1-1/2X1</b>	5	50	035	21.79
4101-212 <sup>1</sup>	1-1/2X1-1/2X1-1/4	5	50	035	32.13
4101-213 <sup>1</sup>	<b>1-1/2X1-1/2X2</b>	5	0	035	32.13
4101-216 <sup>1</sup>	<b>2X1/2X1/2</b>	5	0	035	40.22
4101-217 <sup>1</sup>	<b>2X1/2X3/4</b>	5	0	035	40.22
4101-218 <sup>1</sup>	<b>2X1/2X1</b>	5	0	035	40.22
4101-219 <sup>1</sup>	<b>2X1/2X1-1/4</b>	5	0	035	40.22
4101-220 <sup>1</sup>	<b>2X1/2X1-1/2</b>	5	0	035	40.22
4101-221 <sup>1</sup>	<b>2X1/2X2</b>	5	0	035	40.22
4101-222 <sup>1</sup>	<b>2X3/4X1/2</b>	5	0	035	40.22
4101-223 <sup>1</sup>	<b>2X3/4X3/4</b>	5	0	035	40.22
4101-224 <sup>1</sup>	<b>2X3/4X1</b>	5	0	035	40.22
4101-225 <sup>1</sup>	<b>2X3/4X1-1/4</b>	5	0	035	40.22
4101-226 <sup>1</sup>	<b>2X3/4X1-1/2</b>	5	0	035	40.22
4101-227 <sup>1</sup>	<b>2X3/4X2</b>	5	0	035	40.22
4101-228 <sup>1</sup>	<b>2X1X1/2</b>	5	0	035	40.22
4101-229 <sup>1</sup>	<b>2X1X3/4</b>	5	0	035	40.22
4101-230 <sup>1</sup>	<b>2X1X1</b>	5	0	035	40.22
4101-231 <sup>1</sup>	<b>2X1X1-1/4</b>	5	0	035	40.22
4101-232 <sup>1</sup>	<b>2X1X1-1/2</b>	5	0	035	40.22
4101-233 <sup>1</sup>	<b>2X1X2</b>	5	0	035	40.22
4101-234 <sup>1</sup>	<b>2X1-1/4X1/2</b>	5	0	035	40.22
4101-235 <sup>1</sup>	<b>2X1-1/4X3/4</b>	5	0	035	40.22
4101-236 <sup>1</sup>	<b>2X1-1/4X1</b>	5	0	035	40.22
4101-237 <sup>1</sup>	<b>2X1-1/2X1/2</b>	5	0	035	40.22
4101-238 <sup>1</sup>	<b>2X1-1/2X3/4</b>	5	0	035	40.22
4101-239 <sup>1</sup>	<b>2X1-1/2X1</b>	5	0	035	40.22
4101-240 <sup>1</sup>	<b>2X1-1/2X1-1/4</b>	5	0	035	40.22
4101-241 <sup>1</sup>	<b>2X1-1/2X1-1/2</b>	5	0	035	40.22
4101-242 <sup>1</sup>	<b>2X1-1/4X1-1/4</b>	5	0	035	40.22
4101-243 <sup>1</sup>	<b>2X1-1/4X1-1/2</b>	5	0	035	40.22
4101-244 <sup>1</sup>	<b>2X1-1/4X2</b>	5	0	035	40.22
4101-247	<b>2X2X1/2</b>	10	30	035	36.08
4101-248	<b>2X2X3/4</b>	5	25	035	31.03
4101-249	<b>2X2X1</b>	5	25	035	31.03
4101-250 <sup>1</sup>	<b>2X2X1-1/4</b>	5	25	035	34.97
4101-251	<b>2X2X1-1/2</b>	5	25	035	34.97
4101-257 <sup>1</sup>	<b>2X1-1/2X2</b>	5	0	035	34.97

<sup>1</sup> Outlet sized with bushing.

**Drop Ear Tee - CPVC Fitting with Bracket**

**Socket x Socket x Socket**

NSF® Certified Lead Free

DE4101-005	<b>1/2</b>	25	150	035	3.61
------------	------------	----	-----	-----	------



Part Number	Size	Std Pk	Mstr Ctn	Prod Code	MSRP
-------------	------	--------	----------	-----------	------

**90° Ell**

**Socket x Socket**



NSF® Certified Lead Free

4106-005	<b>1/2</b>	100	1000	035	.79
4106-007	<b>3/4</b>	50	500	035	1.30
4106-010	<b>1</b>	10	100	035	3.80
4106-012	<b>1-1/4</b>	10	100	035	7.59
4106-015	<b>1-1/2</b>	10	100	035	13.68
4106-020	<b>2</b>	5	100	035	26.26

**90° Ell - Reducing**

**Socket x Socket**



NSF® Certified Lead Free

4106-101	<b>3/4X1/2</b>	50	250	035	2.75
4106-130 <sup>1</sup>	<b>1X1/2</b>	25	200	035	10.38
4106-131 <sup>1</sup>	<b>1X3/4</b>	25	200	035	10.39
4106-167 <sup>1</sup>	<b>1-1/4X3/4</b>	10	80	035	17.27
4106-168 <sup>1</sup>	<b>1-1/4X1</b>	10	80	035	16.47
4106-209 <sup>1</sup>	<b>1-1/2X1/2</b>	10	0	035	27.97
4106-210 <sup>1</sup>	<b>1-1/2X3/4</b>	10	0	035	27.97
4106-211 <sup>1</sup>	<b>1-1/2X1</b>	10	0	035	27.59
4106-212 <sup>1</sup>	<b>1-1/2X1-1/4</b>	10	0	035	27.59
4106-247 <sup>1</sup>	<b>2X1/2</b>	5	30	035	57.41
4106-248 <sup>1</sup>	<b>2X3/4</b>	5	30	035	56.10
4106-249 <sup>1</sup>	<b>2X1</b>	5	30	035	55.48
4106-250 <sup>1</sup>	<b>2X1-1/4</b>	5	30	035	55.44
4106-251 <sup>1</sup>	<b>2X1-1/2</b>	5	30	035	55.44

<sup>1</sup> Outlet sized with bushing.

**90° Ell - Special Reinforced**

**Socket x SR Fipt - Stainless Steel Collar**



NSF® Certified Lead Free

4107-005SR	<b>1/2</b>	50	300	035	8.82
------------	------------	----	-----	-----	------

**Drop Ear 90° Ell - CPVC Zinc Reinforced(One Piece Unit)**

**Socket x SR Fipt - Zinc Collar**



NSF® Certified Lead Free

DEZ4107-005SR	<b>1/2</b>	10	150	035	18.47
---------------	------------	----	-----	-----	-------

**Drop Ear 90° Ell - CPVC Fitting with Bracket**

**Socket x Socket**



NSF® Certified Lead Free

DE4106-005	<b>1/2</b>	25	150	035	2.39
------------	------------	----	-----	-----	------

CTS CPVC Product  
**EverTUFF® CPVC CTS Products**



Part Number	Size	Std Pk	Mstr Ctn	Prod Code	MSRP
-------------	------	--------	----------	-----------	------

**Drop Ear 90° EII - Special Reinforced CPVC Fitting with Bracket**

**Socket x SR Fipt - Stainless Steel Collar**

NSF® Certified Lead Free

DE4107-005SR	1/2	10	200	035	9.09
--------------	-----	----	-----	-----	------



**Drop Ear Tee & EII Bracket ONLY**

**For 4101-005 and 4106-005**

DES-005	1/2	1	800	035	1.80
---------	-----	---	-----	-----	------



**Drop Ear SR EII Bracket ONLY**

**For 4107-005SR**

DET-005	1/2	400	0	035	1.80
---------	-----	-----	---	-----	------



**Drop Ear EII - CPVC One Piece**

**Socket x Socket**

NSF® Certified Lead Free

DE4106-005C	1/2	50	250	035	2.36
-------------	-----	----	-----	-----	------



**Drop Ear EII - CPVC One Piece with Gasket**

**Socket x Fipt**

NSF® Certified Lead Free

DE4107-005CG	1/2	50	250	035	4.00
--------------	-----	----	-----	-----	------



**Drop Ear EII - Stainless Steel Thread**

**Socket x SS Fipt**

NSF® Certified Lead Free

DE4107-005SS	1/2	100	0	036	18.94
--------------	-----	-----	---	-----	-------



**Drop Ear EII - Stainless Steel Thread/CPVC Body**

**Socket x SS Fipt**

NSF® Certified Lead Free

DE4107-005CSS	1/2	100	0	036	13.47
---------------	-----	-----	---	-----	-------



**90° Street EII**

**Spigot x Socket**

NSF® Certified Lead Free

4109-005	1/2	100	500	035	.93
----------	-----	-----	-----	-----	-----



Part Number	Size	Std Pk	Mstr Ctn	Prod Code	MSRP
-------------	------	--------	----------	-----------	------

**90° Street EII (continued)**

**Spigot x Socket**

4109-007	3/4	50	250	035	1.49
4109-010	1	50	100	035	6.85

**90° Stub Out EII**

**Socket x Closed End**

NSF® Certified Lead Free

S4106-005	1/2	50	0	035	13.40
-----------	-----	----	---	-----	-------



**45° EII**

**Socket x Socket**

NSF® Certified Lead Free

4117-005	1/2	100	500	035	1.00
4117-007	3/4	50	250	035	1.74
4117-010	1	10	100	035	4.41
4117-012	1-1/4	10	100	035	9.35
4117-015	1-1/2	10	100	035	13.55
4117-020	2	10	100	035	28.38



**45° Street EII**

**Spigot x Socket**

NSF® Certified Lead Free

4127-005	1/2	100	500	035	2.13
4127-007	3/4	50	250	035	2.85
4127-010	1	50	250	035	8.20



**Coupling**

**Socket x Socket**

NSF® Certified Lead Free

4129-005	1/2	100	1000	035	.65
4129-007	3/4	50	500	035	.86
4129-010	1	10	100	035	3.87
4129-012	1-1/4	10	100	035	5.00
4129-015	1-1/2	10	100	035	7.07
4129-020	2	10	50	035	13.46



**Coupling - Reducer**

**Socket x Socket**

NSF® Certified Lead Free

4129-101	3/4X1/2	50	250	035	1.38
4129-130	1X1/2	25	150	035	4.64
4129-131	1X3/4	25	150	035	4.64





CTS CPVC Product  
**EverTUFF® CPVC CTS Products**

Part Number	Size	Std Pk	Mstr Ctn	Prod Code	MSRP
-------------	------	--------	----------	-----------	------

**Coupling - Reducer (continued)**

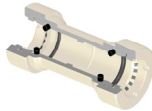
**Socket x Socket**

4129-166 <sup>1</sup>	1-1/4X1/2	10	120	035	14.65
4129-167 <sup>1</sup>	1-1/4X3/4	10	120	035	14.65
4129-168 <sup>1</sup>	1-1/4X1	10	120	035	14.65
4129-209 <sup>1</sup>	1-1/2X1/2	10	60	035	14.65
4129-210 <sup>1</sup>	1-1/2X3/4	10	60	035	14.65
4129-211 <sup>1</sup>	1-1/2X1	10	60	035	14.65
4129-212 <sup>1</sup>	1-1/2X1-1/4	10	120	035	14.65
4129-247 <sup>1</sup>	2X1/2	10	0	035	39.03
4129-248 <sup>1</sup>	2X3/4	10	0	035	39.03
4129-249	2X1	10	0	035	39.03
4129-250 <sup>1</sup>	2X1-1/4	10	0	035	39.03
4129-251 <sup>1</sup>	2X1-1/2	10	0	035	39.03

<sup>1</sup> Outlet sized with bushing.

**GripLoc™ Coupling**

**WARNING: DO NOT INSERT FINGERS**  
**Grip Socket x Grip Socket - Uses No Solvent Cement**



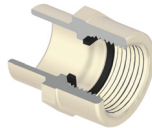
NSF® Certified Lead Free

GL4129-005	1/2	1	75	135	15.00
GL4129-007	3/4	1	50	135	15.63
GL4129-010	1	12	24	135	19.79

Note: The GripLoc™ is water tight, permanent and cannot be removed.

**Female Adapter - with Gasket**

**Socket x Thread**

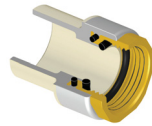


For Cold Water Service Only - NSF® Certified Lead Free

4135-005OR	1/2	100	500	035	2.80
4135-007OR	3/4	50	250	035	3.95
4135-010OR	1	10	100	035	4.58

**Female Adapter - Gasket Sealed Brass Thread Transition**

**Socket x Gasket Fipt - Use NO Thread Sealant**

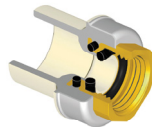


NSF® Certified Lead Free

4135-005BRG	1/2	25	150	033	14.18
4135-007BRG	3/4	25	150	033	18.78
4135-010BRG	1	15	90	033	64.85
4135-012BRG	1-1/4	15	60	033	108.71
4135-015BRG	1-1/2	10	40	033	123.77
4135-020BRG	2	8	32	033	193.48

**Female Adapter - Reducing Gasket Sealed Brass Thread Transition**

**Socket x Gasket Fipt - Use NO Thread Sealant**



NSF® Certified Lead Free

4135-101BRG	3/4X1/2	25	150	033	27.72
4135-130BRG	1X1/2	50	0	033	47.02

Part Number	Size	Std Pk	Mstr Ctn	Prod Code	MSRP
-------------	------	--------	----------	-----------	------

**Female Adapter - CPVC Special Reinforced**

**Socket x SR Fipt - Stainless Steel Collar**



NSF® Certified Lead Free

4135-005SR	1/2	25	200	036	7.57
4135-007SR	3/4	25	300	036	8.32
4135-010SR	1	5	100	036	10.55

**Female Adapter - CPVC Reducing Special Reinforced**

**Socket x SR Fipt - Stainless Steel Collar**



NSF® Certified Lead Free

4135-131SR	1X3/4	25	150	036	14.70
------------	-------	----	-----	-----	-------

**Female Adapter - Stainless Steel Thread Transition**

**Socket x SS Fipt**



NSF® Certified Lead Free

4135-005SS	1/2	25	150	036	9.45
4135-007SS	3/4	25	100	036	13.56
4135-010SS	1	25	50	036	22.51
4135-012SS	1-1/4	16	0	036	51.83
4135-015SS	1-1/2	16	0	036	86.97
4135-020SS	2	8	0	036	128.56

**Male Adapter**

**Mipt x Socket**



For Cold Water Service Only - NSF® Certified Lead Free

4136-005	1/2	100	1000	035	.83
4136-007	3/4	50	500	035	1.40
4136-010	1	10	100	035	6.63
4136-012	1-1/4	10	100	035	10.26
4136-015	1-1/2	10	100	035	12.66
4136-020	2	10	100	035	20.87

**Male Adapter - Reducing**

**Mipt x Socket**



For Cold Water Service Only - NSF® Certified Lead Free

4136-074	1/2X3/4	50	250	035	3.38
4136-101	3/4X1/2	50	250	035	3.38

**Male Adapter - Spigot**

**Mipt x Spigot**



For Cold Water Service Only - NSF® Certified Lead Free

4161-005	1/2	50	700	035	2.67
----------	-----	----	-----	-----	------



CTS CPVC Product  
**EverTUFF® CPVC CTS Products**



Part Number	Size	Std Pk	Mstr Ctn	Prod Code	MSRP
-------------	------	--------	----------	-----------	------

**Male Adapter - Internal Stainless Steel Reinforced**

**R Mipt x Socket - Stainless Steel Sleeve**

NSF® Certified Lead Free

4136-005R	1/2	25	300	036	9.71
4136-007R	3/4	25	300	036	10.79
4136-010R	1	10	120	036	16.08

**Male Adapter - Transition with CPVC Lined Brass Thread**

**Brass Mipt x Socket**

NSF® Certified Lead Free

4136-005BR	1/2	60	360	033	17.01
4136-007BR	3/4	40	160	033	22.53
4136-010BR	1	10	60	033	77.82
4136-012BR	1-1/4	10	60	033	130.45
4136-015BR	1-1/2	10	40	033	148.52
4136-020BR	2	8	32	033	232.16

**Male Adapter - Transition with Stainless Steel Thread**

**Socket x SS Mipt**

NSF® Certified Lead Free

4136-005SS	1/2	25	150	036	9.46
4136-007SS	3/4	25	100	036	14.97
4136-010SS	1	25	50	036	25.34
4136-012SS	1-1/4	16	0	036	50.76
4136-015SS	1-1/2	16	0	036	86.97
4136-020SS	2	8	0	036	95.67

**Reducer Bushing**

**Spigot x Socket**

NSF® Certified Lead Free

4137-101	3/4X1/2	10	500	035	.99
4137-130	1X1/2	10	100	035	3.23
4137-131	1X3/4	10	100	035	3.23
4137-166	1-1/4X1/2	10	100	035	4.18
4137-167	1-1/4X3/4	10	100	035	4.18
4137-168	1-1/4X1	10	100	035	4.18
4137-209	1-1/2X1/2	10	100	035	5.26
4137-210	1-1/2X3/4	10	100	035	5.26
4137-211	1-1/2X1	10	100	035	5.52
4137-212	1-1/2X1-1/4	10	100	035	5.74
4137-247	2X1/2	10	50	035	11.96
4137-248	2X3/4	10	50	035	11.96
4137-249	2X1	10	50	035	11.96
4137-250	2X1-1/4	10	50	035	11.96
4137-251	2X1-1/2	10	100	035	11.96

Made in the U.S.A.

Part Number	Size	Std Pk	Mstr Ctn	Prod Code	MSRP
-------------	------	--------	----------	-----------	------

**Transition Bushing**

**IPS Spigot x CTS Socket**

NSF® Certified Lead Free

4140-005	1/2	10	600	035	4.17
4140-007	3/4	10	100	035	4.36
4140-010	1	10	100	035	4.82
4140-012	1-1/4	10	100	035	5.96
4140-015	1-1/2	10	100	035	7.51
4140-020	2	10	50	035	8.20

**Transition Coupling**

**IPS Socket x CTS Socket**

NSF® Certified Lead Free

4141-007	3/4	25	300	035	2.98
4141-010	1	10	150	035	5.64

**Cap**

**Socket**

NSF® Certified Lead Free

4147-005	1/2	100	500	035	.71
4147-007	3/4	50	250	035	.90
4147-010	1	10	100	035	3.30
4147-012	1-1/4	10	100	035	4.54
4147-015	1-1/2	10	100	035	6.99
4147-020	2	10	50	035	14.11

**GripLoc™ Cap**

**WARNING: DO NOT INSERT FINGERS  
Grip Socket - Uses No Solvent Cement**

NSF® Certified Lead Free

GL4147-005	1/2	25	200	135	14.59
GL4147-007	3/4	25	150	135	15.49
GL4147-010	1	10	50	135	17.26

Note: The GripLoc™ is water tight, permanent and cannot be removed.

**Union**

**Socket with EPDM O-ring Seal**

100 psi Maximum Internal Pressure @ 180°F (82°C) -  
NSF® Certified Lead Free

4197-005	1/2	25	150	035	7.60
4197-007	3/4	12	48	035	12.05
4197-010	1	36	0	035	19.75
4197-012	1-1/4	12	48	035	38.55
4197-015	1-1/2	12	0	035	40.96
4197-020	2	6	36	035	64.38

Suitable for Oil-Free air handling to 25 psi, not for distribution of compressed air or gas  
See MSRP-1 Sheet or Check Spears® On-line Catalog @ [www.spearsmfg.com](http://www.spearsmfg.com) for Pricing



**CTS CPVC Product**  
**EverTUFF® CPVC CTS Products**

Part Number	Size	Std Pk	Mstr Ctn	Prod Code	MSRP
-------------	------	--------	----------	-----------	------

**Union - Special Reinforced**

**Socket x SR Fipt - Stainless Steel Collar**

100 psi Maximum Internal Pressure @ 180°F (82°C) - NSF® Certified Lead Free

4199-005SR	1/2	20	120	036	13.86
4199-007SR	3/4	10	60	036	23.79
4199-010SR	1	10	40	036	39.50

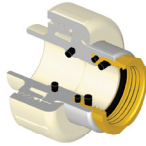


**Union - Gasket Sealed Brass Thread Transition**

**Socket x Gasket Fipt - Use No Thread Sealant**

100 psi Maximum Internal Pressure @ 180°F (82°C) - NSF® Certified Lead Free

4199-005BRG	1/2	20	120	033	22.80
4199-007BRG	3/4	10	60	033	34.37
4199-010BRG	1	10	40	033	59.25



**Transition Compression Adapter**

**Comp w/Gasket x CPVC Spigot**

NSF® Certified Lead Free

TCA-005	1/2	25	200	035	2.82
TCA-007	3/4	25	100	035	3.34



**Transition Union - Brass Compression**

**Brass Comp x CPVC Spigot**

NSF® Certified Lead Free

TUC-005	1/2	150	0	036	18.94
TUC-007	3/4	75	0	036	31.66



**Transition Union - Brass Male Thread**

**Brass Mipt x CPVC Spigot**

NSF® Certified Lead Free

TUM-005	1/2	150	0	036	17.59
TUM-007	3/4	75	0	036	32.06



**Transition Union - Brass Female Thread**

**Brass Fipt x CPVC Spigot**

NSF® Certified Lead Free

TUF-005	1/2	150	0	036	15.83
TUF-007	3/4	75	0	036	32.00



Part Number	Size	Std Pk	Mstr Ctn	Prod Code	MSRP
-------------	------	--------	----------	-----------	------

**CPVC-PEX Transition Spigot Adapters**

**Spigot x PEX Barb-Crimp Style**

CPVC Spigot is also (Socket) NSF® Certified Lead Free

TPC-005	1/2	25	150	036	23.50
TPC-007	3/4 (1/2)	25	100	036	26.50
TPC-010	1 (3/4)	25	50	036	36.80



ASTM F1807 Standard PEX Connector, Stainless Steel

**CPVC-PEX Transition Socket Adapters**

**Socket x PEX Barb-Crimp Style**

CPVC Socket is also (Spigot) NSF® Certified Lead Free

TPC-005-S	1/2 (3/4)	25	150	036	23.50
TPC-007-S	3/4 (1)	25	100	036	26.50
TPC-010-S	1 (1-1/4)	50	300	036	36.83



ASTM F1807 Standard PEX Connector, Stainless Steel

**Water Hammer Arrester**

**Spigot**

NSF® Certified Lead Free

WHA-005	1/2	25	100	035	19.11
---------	-----	----	-----	-----	-------



**Quarter Turn Angle Supply Stop**

**Socket x NPT**

100 psi @ 180°F (82°C)

Male Thread for Connection to Flexible Supply Line having 1/2" Female NPT Thread Inlet - NSF® Certified Lead Free

7722-005	1/2	50	400	217	10.71
----------	-----	----	-----	-----	-------



**Quarter Turn Angle Supply Stop**

**SR Fipt x NPT**

100 psi @ 180°F (82°C)

Male Thread for Connection to Flexible Supply Line having 1/2" Female NPT Thread Inlet - NSF® Certified Lead Free

7721-005SR	1/2	50	400	217	12.17
------------	-----	----	-----	-----	-------



CTS CPVC Product  
**EverTUFF® CPVC CTS Products**



Part Number	Size	Std Pk	Mstr Ctn	Prod Code	MSRP
-------------	------	--------	----------	-----------	------

**Quarter Turn Angle Supply Stop**

**SR Fipt x Comp Thread**

100 psi @ 180°F (82°C)  
Male Thread for Connection to Flexible Supply Line having Female 3/8" Compression Thread Inlet - NSF® Certified Lead Free

7721-073SR	1/2X3/8	50	400	217	12.17
------------	---------	----	-----	-----	-------



**Quarter Turn Angle Supply Stop**

**Socket x Comp Thread**

100 psi @ 180°F (82°C)  
Male Thread for Connection to Flexible Supply Line having 1/4", 3/8" or 1/2" Female Compression Thread Inlet - NSF® Certified Lead Free

7722CM-072	1/2X1/4	72	0	217	10.71
7722-073	1/2X3/8	50	400	217	10.71
7722CM-005	1/2	72	0	217	10.71



**Quarter Turn Straight Supply Stop**

**Socket x Comp Thread**

100 psi @ 180°F (82°C)  
Male Thread for Connection to Flexible Supply Line having Female 3/8" or 1/2" Compression Thread Inlet - NSF® Certified Lead Free

7422CM-073	1/2X3/8	72	0	217	10.71
7422CM-005	1/2	72	0	217	10.71



**Quarter Turn Straight Supply Stop**

**Socket x NPT**

100 psi @ 180°F (82°C)  
Male Thread for Connection to Flexible Supply Line having Female 1/2" NPT Thread Inlet - NSF® Certified Lead Free

7422-005	1/2	72	0	217	10.71
----------	-----	----	---	-----	-------



**Ball Valve - Commercial CTS**

**Socket with EPDM O-ring Seal**

100 psi Maximum Internal Pressure @ 180°F (82°C)  
NSF® Certified Lead Free

1922-005	1/2	25	200	217	18.15
1922-007	3/4	24	0	217	26.32
1922-010	1	25	0	217	33.74
1922-012	1-1/4	8	0	217	57.47
1922-015	1-1/2	6	0	217	80.13
1922-020	2	4	0	217	102.07



Part Number	Size	Std Pk	Mstr Ctn	Prod Code	MSRP
-------------	------	--------	----------	-----------	------

**Ball Valve - Residential CTS**

**Socket x Socket**

NSF® Certified Lead Free

1922R-005	1/2	72	0	217	10.52
1922R-007	3/4	36	0	217	14.97
1922R-010	1	24	0	217	26.05
1922R-012	1-1/4	8	32	217	52.87
1922R-015	1-1/2	6	0	217	62.19
1922R-020	2	4	16	217	81.25



**Stop Valve - Red Handle**

**Socket x Socket**

NSF® Certified Lead Free

8422-005	1/2	36	0	217	12.78
8422-007	3/4	36	0	217	12.78



**Stop Valve - Clear Handle**

**Socket x Socket**

NSF® Certified Lead Free

8422CH-005	1/2	36	0	217	12.78
8422CH-007	3/4	36	0	217	12.78



**Stop & Waste Valve**

**Socket x Socket**

NSF® Certified Lead Free

8422W-005	1/2	36	0	217	13.40
8422W-007	3/4	36	0	217	13.40



**Boiler Drain Valve**

**Socket x MHT**

NSF® Certified Lead Free

82MH-005	1/2	36	0	217	13.40
82MH-007	3/4	36	0	217	13.40



**Pipe - CPVC CTS SDR 11**

**10' Lengths, Priced Per Foot**

NSF® Certified Lead Free

CTS-005	1/2	500	0	034	.98
CTS-007	3/4	250	0	034	1.76
CTS-010	1	150	0	034	3.61
CTS-012	1-1/4	100	0	034	5.35
CTS-015	1-1/2	100	0	034	7.10





**CTS CPVC Product**  
**EverTUFF® CPVC CTS Products**

Part Number	Size	Std Pk	Mstr Ctn	Prod Code	MSRP
-------------	------	--------	----------	-----------	------

**Pipe - CPVC CTS SDR 11 (continued)**

**10' Lengths, Priced Per Foot**

CTS-020	2	50	0	034	12.01
---------	---	----	---	-----	-------

• Pipe sold in bag quantities only - no broken bags • No return on Pipe • Large orders may be shipped directly from Spears® manufacturing facility. Note: Multiple drops may be made on TL shipments. Contact Spears® Regional Distribution Center for requirements and drop-off charges. • See Spears® Manufacturing Company Terms and Conditions of Sale for freight requirements.

**Pipe - CPVC CTS SDR 11**

**20' Lengths, Priced Per Foot**



NSF® Certified Lead Free

CTS-005-20	1/2	1000	0	034	.98
CTS-007-20	3/4	500	0	034	1.76
CTS-010-20	1	300	0	034	3.61
CTS-012-20	1-1/4	200	0	034	5.35
CTS-015-20	1-1/2	200	0	034	7.10
CTS-020-20	2	100	0	034	12.01

**Pipe - CPVC CTS Coiled SDR 11**

**100 ft. Coil, Priced Per Foot**



NSF® Certified Lead Free

CTS-005-100	1/2	100	0	034	1.15
CTS-007-100	3/4	100	0	034	2.09
CTS-010-100	1	100	0	034	4.11

**CPVC CTS COILED PIPE WEIGHTS:**

CTS-005-100 Weight per Foot .090 lbs; per Coil Weight 9 lbs.  
 CTS-007-100 Weight per Foot .149 lbs; per Coil Weight 14.9 lbs.  
 CTS-010-100 Weight per Foot .239 lbs; per Coil Weight 23.9 lbs.  
**WARNING: Banded coils will expand when opened. Exercise caution to avoid injury during banding removal.**

**CTS Tubing Straps**

**Std Pk Bag of 25 For Anchoring CTS Pipe**

Priced Each - Sold in Full Bag Quantity Only

556A	1/2	25	500	299	.38
556B	3/4	25	500	299	.39

**CTS Tube Talon with Nail**

**Std Pk Bag Quantities as Specified. For Anchoring CTS Pipe**

Priced Each - Sold in Full Bag Quantity Only

555A	1/2	100	1000	299	1.09
555B	3/4	100	1000	299	1.66
555C	1	50	500	299	4.67



Part Number	Size	Std Pk	Mstr Ctn	Prod Code	MSRP
-------------	------	--------	----------	-----------	------

**Solvent Cement -EverTUFF® CTS One Step**

NSF® Certified Lead Free



CTS5-005	1/4 Pint	24	0	701	9.01
CTS5-010	1/2 Pint	24	0	701	14.34
CTS5-020	Pint	12	0	701	23.23
CTS5-030	Quart	12	0	701	40.42
CTS5-040	Gallon	6	0	701	138.29

**Cap Daubers**

DHP-38	3/8" for 1/2 Pint	50	400	710	1.23
DHP-50	1/2" for 1/2 Pint	50	400	710	1.23
DHP-75	3/4" for 1/2 Pint	50	0	710	1.31
DP-50	1/2" for Pint	50	0	710	1.23
DP-75	3/4" for Pint	50	0	710	1.31
DP-125	1-1/4" for Pint	50	0	710	1.58
DQ-50	1/2" for Quart	50	0	710	1.23
DQ-75	3/4" for Quart	50	0	710	1.23
DQ-125	1-1/4" for Quart	50	0	710	1.58

3/8" for pipe to 3/4" • 1/2" for pipe to 1" • 3/4" for pipe to 1-1/2" • 1-1/4" for pipe 1-1/2" to 3"



**Can-Mate Daubers**

**Adjustable Plastic Applicator with Telescoping Stem for use with Standard 1/2 Pint, Pint and Quart Cans**

CM-50	1/2"	50	0	710	5.26
CM-75	3/4"	50	0	710	5.26
CM-150	1-1/4"	50	0	710	5.26

1/2" for pipe to 1" • 3/4" for pipe to 1-1/2" • 1-1/4" for pipe 1-1/2" to 3"



**Deburring Tool**

**Cone Type for pipe from 1/2" through 2"**

DEB-2	1/2" to 2" Pipe	1	6	710	97.71
-------	-----------------	---	---	-----	-------

