



CTS CPVC Product  
**EverTUFF® CPVC CTS Fittings, Valves, Pipe & Cement**

# **EverTUFF® CPVC CTS Fittings, Valves, Pipe & Cement**



## **PRODUCT**

Contact Spears® for any Information not found.



## PRODUCT INFORMATION

### APPLICATION

Spears® Copper Tube Size (CTS) fittings are manufactured from chlorinated polyvinyl chloride (CPVC) for use with SDR-11 piping systems of CTS outside diameter in hot and cold water distribution systems. Check state and local codes for application and restrictions.

### CONFORMANCE STANDARDS

Spears® CPVC CTS fittings conform to ASTM D 2846 Specification for Chlorinated Poly (Vinyl Chloride) (CPVC) Plastic Hot and Cold Water Distribution Systems.

### WORKING PRESSURE

Spears® CPVC CTS fittings have a continuous working pressure rating of 100 psi at 180°F (82°C) [400 psi at 73°F (23°C)].

### PRODUCT CERTIFICATION

Spears® CPVC CTS fittings and Special Reinforced (SR) Thread transition adapters are tested and certified by the National Sanitation Foundation (NSF®) to ASTM D 2846 for use in Hot and Cold Water Distribution Systems, and for safe use in potable water systems under NSF® Standard 14/61.

### TESTING

Once the system has been installed and allowed to cure properly, the system shall be tested in accordance with applicable code requirements. When testing with water (hydrostatic testing), the system must be slowly filled with water and the air bled from the highest and furthest points in the system before test pressure is applied. Failure to do so can cause damage to the piping system and could be harmful to the job site personnel should a failure occur. If a leak is found, the affected product must be cut out and discarded. A new section can be installed using couplings or other approved means.

Part Number	Size	Std Pk	Mstr Ctn	Prod Code	MSRP
-------------	------	--------	----------	-----------	------

### Tee

#### Socket x Socket x Socket



NSF® Certified Lead Free

4101-005	1/2	100	500	035	1.07
4101-007	3/4	50	250	035	2.00
4101-010	1	10	100	035	10.03
4101-012	1-1/4	10	100	035	15.46
4101-015	1-1/2	5	50	035	20.14
4101-020	2	5	25	035	32.56

### Tee - Reducing

#### Socket x Socket x Socket



NSF® Certified Lead Free

4101-074	1/2X1/2X3/4	10	100	035	3.72
4101-094	3/4X1/2X1/2	50	250	035	1.99
4101-095	3/4X1/2X3/4	25	250	035	2.72
4101-101	3/4X3/4X1/2	50	250	035	2.07
4101-102 <sup>1</sup>	3/4X3/4X1	10	100	035	22.22
4101-120 <sup>1</sup>	1X1/2X1/2	10	100	035	23.95
4101-121 <sup>1</sup>	1X1/2X3/4	10	100	035	24.60
4101-122 <sup>1</sup>	1X1/2X1	10	100	035	18.75
4101-124 <sup>1</sup>	1X3/4X1/2	10	100	035	22.36
4101-125	1X3/4X3/4	10	100	035	12.22
4101-126 <sup>1</sup>	1X3/4X1	10	100	035	17.89
4101-130	1X1X1/2	10	100	035	11.44
4101-131	1X1X3/4	10	100	035	10.92
4101-138 <sup>1</sup>	1-1/4X1/2X1/2	10	80	035	27.92
4101-139 <sup>1</sup>	1-1/4X1/2X3/4	10	80	035	27.92

Part Number	Size	Std Pk	Mstr Ctn	Prod Code	MSRP
-------------	------	--------	----------	-----------	------

### Tee - Reducing (continued)

#### Socket x Socket x Socket

4101-142 <sup>1</sup>	1-1/4X1/2X1-1/4	10	80	035	27.92
4101-146 <sup>1</sup>	1-1/4X3/4X1/2	10	80	035	27.92
4101-147 <sup>1</sup>	1-1/4X3/4X3/4	10	80	035	24.94
4101-148 <sup>1</sup>	1-1/4X3/4X1	10	80	035	27.03
4101-149 <sup>1</sup>	1-1/4X3/4X1-1/4	10	80	035	24.84
4101-156 <sup>1</sup>	1-1/4X1X1/2	10	80	035	26.40
4101-157 <sup>1</sup>	1-1/4X1X3/4	10	80	035	25.27
4101-158 <sup>1</sup>	1-1/4X1X1	10	100	035	25.95
4101-159 <sup>1</sup>	1-1/4X1X1-1/4	10	80	035	29.11
4101-166	1-1/4X1-1/4X1/2	10	100	035	27.92
4101-168	1-1/4X1-1/4X1	10	100	035	26.26
4101-167	1-1/4X1-1/4X3/4	10	100	035	24.84
4101-169 <sup>1</sup>	1-1/4X1-1/4X1-1/2	5	40	035	27.92
4101-173 <sup>1</sup>	1-1/2X1/2X1/2	5	40	035	33.82
4101-174 <sup>1</sup>	1-1/2X1/2X3/4	5	40	035	33.82
4101-175 <sup>1</sup>	1-1/2X1/2X1	5	40	035	33.82
4101-176 <sup>1</sup>	1-1/2X1/2X1-1/4	5	40	035	33.82
4101-177 <sup>1</sup>	1-1/2X1/2X1-1/2	5	40	035	33.82
4101-182 <sup>1</sup>	1-1/2X3/4X1/2	5	40	035	33.82
4101-184 <sup>1</sup>	1-1/2X3/4X3/4	5	40	035	33.82
4101-185 <sup>1</sup>	1-1/2X3/4X1	5	40	035	33.82
4101-186 <sup>1</sup>	1-1/2X3/4X1-1/4	5	40	035	33.82
4101-188 <sup>1</sup>	1-1/2X3/4X1-1/2	5	40	035	33.82
4101-193 <sup>1</sup>	1-1/2X1X1/2	5	40	035	33.82
4101-194 <sup>1</sup>	1-1/2X1X3/4	5	40	035	33.82
4101-195 <sup>1</sup>	1-1/2X1X1	10	100	035	33.82
4101-196 <sup>1</sup>	1-1/2X1X1-1/4	5	40	035	33.82
4101-197 <sup>1</sup>	1-1/2X1X1-1/2	5	40	035	33.82
4101-199 <sup>1</sup>	1-1/2X1-1/4X1/2	5	40	035	33.82
4101-201 <sup>1</sup>	1-1/2X1-1/4X3/4	5	40	035	33.82
4101-202 <sup>1</sup>	1-1/2X1-1/4X1	5	40	035	33.82



**CTS CPVC Product**  
**EverTUFF® CPVC CTS Products**

Part Number	Size	Std Pk	Mstr Ctn	Prod Code	MSRP
-------------	------	-----------	-------------	--------------	------

**Tee - Reducing (continued)**

**Socket x Socket x Socket**

4101-203 <sup>1</sup>	1-1/2X1-1/4X1-1/4	5	40	035	33.82
4101-204 <sup>1</sup>	1-1/2X1-1/4X1-1/2	5	40	035	33.82
4101-209	1-1/2X1-1/2X1/2	10	50	035	30.05
4101-210	1-1/2X1-1/2X3/4	10	100	035	25.05
4101-211	1-1/2X1-1/2X1	5	50	035	22.94
4101-212 <sup>1</sup>	1-1/2X1-1/2X1-1/4	5	50	035	33.82
4101-213 <sup>1</sup>	1-1/2X1-1/2X2	5	0	035	33.82
4101-216 <sup>1</sup>	2X1/2X1/2	5	0	035	42.34
4101-217 <sup>1</sup>	2X1/2X3/4	5	0	035	42.34
4101-218 <sup>1</sup>	2X1/2X1	5	0	035	42.34
4101-219 <sup>1</sup>	2X1/2X1-1/4	5	0	035	42.34
4101-220 <sup>1</sup>	2X1/2X1-1/2	5	0	035	42.34
4101-221 <sup>1</sup>	2X1/2X2	5	0	035	42.34
4101-222 <sup>1</sup>	2X3/4X1/2	5	0	035	42.34
4101-223 <sup>1</sup>	2X3/4X3/4	5	0	035	42.34
4101-224 <sup>1</sup>	2X3/4X1	5	0	035	42.34
4101-225 <sup>1</sup>	2X3/4X1-1/4	5	0	035	42.34
4101-226 <sup>1</sup>	2X3/4X1-1/2	5	0	035	42.34
4101-227 <sup>1</sup>	2X3/4X2	5	0	035	42.34
4101-228 <sup>1</sup>	2X1X1/2	5	0	035	42.34
4101-229 <sup>1</sup>	2X1X3/4	5	0	035	42.34
4101-230 <sup>1</sup>	2X1X1	5	0	035	42.34
4101-231 <sup>1</sup>	2X1X1-1/4	5	0	035	42.34
4101-232 <sup>1</sup>	2X1X1-1/2	5	0	035	42.34
4101-233 <sup>1</sup>	2X1X2	5	0	035	42.34
4101-234 <sup>1</sup>	2X1-1/4X1/2	5	0	035	42.34
4101-235 <sup>1</sup>	2X1-1/4X3/4	5	0	035	42.34
4101-236 <sup>1</sup>	2X1-1/4X1	5	0	035	42.34
4101-237 <sup>1</sup>	2X1-1/2X1/2	5	0	035	42.34
4101-238 <sup>1</sup>	2X1-1/2X3/4	5	0	035	42.34
4101-239 <sup>1</sup>	2X1-1/2X1	5	0	035	42.34
4101-240 <sup>1</sup>	2X1-1/2X1-1/4	5	0	035	42.34
4101-241 <sup>1</sup>	2X1-1/2X1-1/2	5	0	035	42.34
4101-242 <sup>1</sup>	2X1-1/4X1-1/4	5	0	035	42.34
4101-243 <sup>1</sup>	2X1-1/4X1-1/2	5	0	035	42.34
4101-244 <sup>1</sup>	2X1-1/4X2	5	0	035	42.34
4101-247	2X2X1/2	10	30	035	37.98
4101-248	2X2X3/4	5	25	035	32.66
4101-249	2X2X1	5	25	035	32.66
4101-250 <sup>1</sup>	2X2X1-1/4	5	25	035	36.81
4101-251	2X2X1-1/2	5	25	035	36.81
4101-257 <sup>1</sup>	2X1-1/2X2	5	0	035	36.81

<sup>1</sup> Outlet sized with bushing.

**Drop Ear Tee - CPVC Fitting with Bracket**

**Socket x Socket x Socket**

NSF® Certified Lead Free

DE4101-005	1/2	25	150	035	3.80
------------	-----	----	-----	-----	------



Part Number	Size	Std Pk	Mstr Ctn	Prod Code	MSRP
-------------	------	-----------	-------------	--------------	------

**90° EII**

**Socket x Socket**



NSF® Certified Lead Free

4106-005	1/2	100	1000	035	.83
4106-007	3/4	50	500	035	1.37
4106-010	1	10	100	035	4.00
4106-012	1-1/4	10	100	035	7.99
4106-015	1-1/2	10	100	035	14.40
4106-020	2	5	100	035	27.64

**90° EII - Reducing**

**Socket x Socket**



NSF® Certified Lead Free

4106-101	3/4X1/2	50	250	035	2.89
4106-130 <sup>1</sup>	1X1/2	25	200	035	10.93
4106-131 <sup>1</sup>	1X3/4	25	200	035	10.94
4106-167 <sup>1</sup>	1-1/4X3/4	10	80	035	18.18
4106-168 <sup>1</sup>	1-1/4X1	10	80	035	17.34
4106-209 <sup>1</sup>	1-1/2X1/2	10	0	035	29.44
4106-210 <sup>1</sup>	1-1/2X3/4	10	0	035	29.44
4106-211 <sup>1</sup>	1-1/2X1	10	0	035	29.04
4106-212 <sup>1</sup>	1-1/2X1-1/4	10	0	035	29.04
4106-247 <sup>1</sup>	2X1/2	5	30	035	60.43
4106-248 <sup>1</sup>	2X3/4	5	30	035	59.05
4106-249 <sup>1</sup>	2X1	5	30	035	58.40
4106-250 <sup>1</sup>	2X1-1/4	5	30	035	58.36
4106-251 <sup>1</sup>	2X1-1/2	5	30	035	58.36

<sup>1</sup> Outlet sized with bushing.

**90° EII - Special Reinforced**

**Socket x SR Fipt - Stainless Steel Collar**



NSF® Certified Lead Free

4107-005SR	1/2	50	300	035	9.28
------------	-----	----	-----	-----	------

**Drop Ear 90° EII - CPVC Zinc Reinforced(One Piece Unit)**

**Socket x SR Fipt - Zinc Collar**



NSF® Certified Lead Free

DEZ4107-005SR	1/2	10	150	035	19.44
---------------	-----	----	-----	-----	-------

**Drop Ear 90° EII - CPVC Fitting with Bracket**

**Socket x Socket**



NSF® Certified Lead Free

DE4106-005	1/2	25	150	035	2.52
------------	-----	----	-----	-----	------

CTS CPVC Product  
**EverTUFF® CPVC CTS Products**



Part Number	Size	Std Pk	Mstr Ctn	Prod Code	MSRP
-------------	------	--------	----------	-----------	------

**Drop Ear 90° EII - Special Reinforced CPVC Fitting with Bracket**

**Socket x SR Fipt - Stainless Steel Collar**

NSF® Certified Lead Free

DE4107-005SR	1/2	10	200	035	9.57
--------------	-----	----	-----	-----	------



**Drop Ear Tee & EII Bracket ONLY**

**For 4101-005 and 4106-005**

DES-005	1/2	1	800	035	1.89
---------	-----	---	-----	-----	------



**Drop Ear SR EII Bracket ONLY**

**For 4107-005SR**

DET-005	1/2	400	0	035	1.89
---------	-----	-----	---	-----	------



**Drop Ear EII - CPVC One Piece**

**Socket x Socket**

NSF® Certified Lead Free

DE4106-005C	1/2	50	250	035	2.48
-------------	-----	----	-----	-----	------



**Drop Ear EII - CPVC One Piece with Gasket**

**Socket x Fipt**

NSF® Certified Lead Free

DE4107-005CG	1/2	50	250	035	4.21
--------------	-----	----	-----	-----	------



**Drop Ear EII - Stainless Steel Thread**

**Socket x SS Fipt**

NSF® Certified Lead Free

DE4107-005SS	1/2	100	0	036	19.94
--------------	-----	-----	---	-----	-------



**Drop Ear EII - Stainless Steel Thread/CPVC Body**

**Socket x SS Fipt**

NSF® Certified Lead Free

DE4107-005CSS	1/2	100	0	036	14.18
---------------	-----	-----	---	-----	-------



**90° Street EII**

**Spigot x Socket**

NSF® Certified Lead Free

4109-005	1/2	100	500	035	.98
----------	-----	-----	-----	-----	-----



Part Number	Size	Std Pk	Mstr Ctn	Prod Code	MSRP
-------------	------	--------	----------	-----------	------

**90° Street EII (continued)**

**Spigot x Socket**

4109-007	3/4	50	250	035	1.57
4109-010	1	50	100	035	7.21

**90° Stub Out EII**

**Socket x Closed End**

NSF® Certified Lead Free

S4106-005	1/2	50	0	035	14.11
-----------	-----	----	---	-----	-------



**45° EII**

**Socket x Socket**

NSF® Certified Lead Free

4117-005	1/2	100	500	035	1.05
4117-007	3/4	50	250	035	1.83
4117-010	1	10	100	035	4.64
4117-012	1-1/4	10	100	035	9.84
4117-015	1-1/2	10	100	035	14.26
4117-020	2	10	100	035	29.87



**45° Street EII**

**Spigot x Socket**

NSF® Certified Lead Free

4127-005	1/2	100	500	035	2.24
4127-007	3/4	50	250	035	3.00
4127-010	1	50	250	035	8.63



**Coupling**

**Socket x Socket**

NSF® Certified Lead Free

4129-005	1/2	100	1000	035	.68
4129-007	3/4	50	500	035	.91
4129-010	1	10	100	035	4.07
4129-012	1-1/4	10	100	035	5.26
4129-015	1-1/2	10	100	035	7.44
4129-020	2	10	50	035	14.17



**Coupling - Reducer**

**Socket x Socket**

NSF® Certified Lead Free

4129-101	3/4X1/2	50	250	035	1.45
4129-130	1X1/2	25	150	035	4.88
4129-131	1X3/4	25	150	035	4.88





CTS CPVC Product  
**EverTUFF® CPVC CTS Products**

Part Number	Size	Std Pk	Mstr Ctn	Prod Code	MSRP
-------------	------	--------	----------	-----------	------

**Coupling - Reducer (continued)**

**Socket x Socket**

4129-166 <sup>1</sup>	1-1/4X1/2	10	120	035	15.42
4129-167 <sup>1</sup>	1-1/4X3/4	10	120	035	15.42
4129-168 <sup>1</sup>	1-1/4X1	10	120	035	15.42
4129-209 <sup>1</sup>	1-1/2X1/2	10	60	035	15.42
4129-210 <sup>1</sup>	1-1/2X3/4	10	60	035	15.42
4129-211 <sup>1</sup>	1-1/2X1	10	60	035	15.42
4129-212 <sup>1</sup>	1-1/2X1-1/4	10	120	035	15.42
4129-247 <sup>1</sup>	2X1/2	10	0	035	41.08
4129-248 <sup>1</sup>	2X3/4	10	0	035	41.08
4129-249	2X1	10	0	035	41.08
4129-250 <sup>1</sup>	2X1-1/4	10	0	035	41.08
4129-251 <sup>1</sup>	2X1-1/2	10	0	035	41.08

<sup>1</sup> Outlet sized with bushing.

**GripLoc™ Coupling**

**WARNING: DO NOT INSERT FINGERS**  
**Grip Socket x Grip Socket - Uses No Solvent Cement**



NSF® Certified Lead Free

GL4129-005	1/2	1	75	135	15.79
GL4129-007	3/4	1	50	135	16.45
GL4129-010	1	12	24	135	20.83

Note: The GripLoc™ is water tight, permanent and cannot be removed.

**Female Adapter - with Gasket**

**Socket x Thread**



For Cold Water Service Only - NSF® Certified Lead Free

4135-005OR	1/2	100	500	035	2.95
4135-007OR	3/4	50	250	035	4.16
4135-010OR	1	10	100	035	4.82

**Female Adapter - Gasket Sealed Brass Thread Transition**

**Socket x Gasket Fipt - Use NO Thread Sealant**



NSF® Certified Lead Free

4135-005BRG	1/2	25	150	033	14.93
4135-007BRG	3/4	25	150	033	19.77
4135-010BRG	1	15	90	033	68.26
4135-012BRG	1-1/4	15	60	033	114.43
4135-015BRG	1-1/2	10	40	033	130.28
4135-020BRG	2	8	32	033	203.66

**Female Adapter - Reducing Gasket Sealed Brass Thread Transition**

**Socket x Gasket Fipt - Use NO Thread Sealant**



NSF® Certified Lead Free

4135-101BRG	3/4X1/2	25	150	033	29.18
4135-130BRG	1X1/2	50	0	033	49.49

Part Number	Size	Std Pk	Mstr Ctn	Prod Code	MSRP
-------------	------	--------	----------	-----------	------

**Female Adapter - CPVC Special Reinforced**

**Socket x SR Fipt - Stainless Steel Collar**



NSF® Certified Lead Free

4135-005SR	1/2	25	200	036	7.97
4135-007SR	3/4	25	300	036	8.76
4135-010SR	1	5	100	036	11.11

**Female Adapter - CPVC Reducing Special Reinforced**

**Socket x SR Fipt - Stainless Steel Collar**



NSF® Certified Lead Free

4135-131SR	1X3/4	25	150	036	15.47
------------	-------	----	-----	-----	-------

**Female Adapter - Stainless Steel Thread Transition**

**Socket x SS Fipt**



NSF® Certified Lead Free

4135-005SS	1/2	25	150	036	9.95
4135-007SS	3/4	25	150	036	14.27
4135-010SS	1	25	100	036	23.69
4135-012SS	1-1/4	16	0	036	54.56
4135-015SS	1-1/2	16	0	036	91.55
4135-020SS	2	8	0	036	135.33

**Male Adapter**

**Mipt x Socket**



For Cold Water Service Only - NSF® Certified Lead Free

4136-005	1/2	100	1000	035	.87
4136-007	3/4	50	500	035	1.47
4136-010	1	10	100	035	6.98
4136-012	1-1/4	10	100	035	10.80
4136-015	1-1/2	10	100	035	13.33
4136-020	2	10	100	035	21.97

**Male Adapter - Reducing**

**Mipt x Socket**



For Cold Water Service Only - NSF® Certified Lead Free

4136-074	1/2X3/4	50	250	035	3.56
4136-101	3/4X1/2	50	250	035	3.56

**Male Adapter - Spigot**

**Mipt x Spigot**



For Cold Water Service Only - NSF® Certified Lead Free

4161-005	1/2	50	700	035	2.81
----------	-----	----	-----	-----	------

**CTS CPVC Product**  
**EverTUFF® CPVC CTS Products**



Part Number	Size	Std Pk	Mstr Ctn	Prod Code	MSRP
-------------	------	--------	----------	-----------	------

**Male Adapter - Internal Stainless Steel Reinforced**



**R Mipt x Socket - Stainless Steel Sleeve**

NSF® Certified Lead Free

4136-005R	1/2	25	300	036	10.22
4136-007R	3/4	25	300	036	11.36
4136-010R	1	10	120	036	16.93
4136-012R	1-1/4	20	120	036	51.96
4136-015R	1-1/2	10	120	036	79.28
4136-020R	2	10	120	036	91.36

**Male Adapter - Transition with CPVC Lined Brass Thread**



**Brass Mipt x Socket**

NSF® Certified Lead Free

4136-005BR	1/2	60	240	033	17.91
4136-007BR	3/4	40	160	033	23.72
4136-010BR	1	10	60	033	81.92
4136-012BR	1-1/4	10	60	033	137.32
4136-015BR	1-1/2	10	40	033	156.34
4136-020BR	2	8	32	033	244.38

**Male Adapter - Transition with Stainless Steel Thread**



**Socket x SS Mipt**

NSF® Certified Lead Free

4136-005SS	1/2	25	150	036	9.96
4136-007SS	3/4	25	150	036	15.76
4136-010SS	1	25	0	036	26.67
4136-012SS	1-1/4	16	0	036	53.43
4136-015SS	1-1/2	16	0	036	91.55
4136-020SS	2	8	0	036	100.71

**Reducer Bushing**



**Spigot x Socket**

NSF® Certified Lead Free

4137-101	3/4X1/2	10	500	035	1.04
4137-130	1X1/2	10	100	035	3.40
4137-131	1X3/4	10	100	035	3.40
4137-166	1-1/4X1/2	10	100	035	4.40
4137-167	1-1/4X3/4	10	100	035	4.40
4137-168	1-1/4X1	10	100	035	4.40
4137-209	1-1/2X1/2	10	100	035	5.54
4137-210	1-1/2X3/4	10	100	035	5.54
4137-211	1-1/2X1	10	100	035	5.81
4137-212	1-1/2X1-1/4	10	100	035	6.04
4137-247	2X1/2	10	50	035	12.59
4137-248	2X3/4	10	50	035	12.59
4137-249	2X1	10	60	035	12.59

Part Number	Size	Std Pk	Mstr Ctn	Prod Code	MSRP
-------------	------	--------	----------	-----------	------

**Reducer Bushing (continued)**

**Spigot x Socket**

4137-250	2X1-1/4	10	50	035	12.59
4137-251	2X1-1/2	10	100	035	12.59

**Transition Bushing**



**IPS Spigot x CTS Socket**

NSF® Certified Lead Free

4140-005	1/2	10	600	035	4.39
4140-007	3/4	10	100	035	4.59
4140-010	1	10	100	035	5.07
4140-012	1-1/4	10	100	035	6.27
4140-015	1-1/2	10	100	035	7.91
4140-020	2	10	50	035	8.63

**Transition Coupling**



**IPS Socket x CTS Socket**

NSF® Certified Lead Free

4141-007	3/4	25	300	035	3.14
4141-010	1	10	150	035	5.94

**Cap**

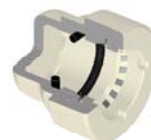


**Socket**

NSF® Certified Lead Free

4147-005	1/2	100	500	035	.75
4147-007	3/4	50	250	035	.95
4147-010	1	10	100	035	3.47
4147-012	1-1/4	10	100	035	4.78
4147-015	1-1/2	10	100	035	7.36
4147-020	2	10	50	035	14.85

**GripLoc™ Cap**



**WARNING: DO NOT INSERT FINGERS**  
**Grip Socket - Uses No Solvent Cement**

NSF® Certified Lead Free

GL4147-005	1/2	25	200	135	15.36
GL4147-007	3/4	25	150	135	16.31
GL4147-010	1	10	50	135	18.17

Note: The GripLoc™ is water tight, permanent and cannot be removed.

**Union**



**Socket with EPDM O-ring Seal**

100 psi Maximum Internal Pressure @ 180°F (82°C) -  
 NSF® Certified Lead Free

4197-005	1/2	25	150	035	8.00
4197-007	3/4	12	48	035	12.68



CTS CPVC Product  
**EverTUFF® CPVC CTS Products**

Part Number	Size	Std Pk	Mstr Ctn	Prod Code	MSRP
-------------	------	--------	----------	-----------	------

**Union (continued)**

**Socket with EPDM O-ring Seal**

4197-010	1	36	0	035	20.79
4197-012	1-1/4	12	48	035	40.58
4197-015	1-1/2	12	0	035	43.12
4197-020	2	6	36	035	67.77

**Union - Special Reinforced**

**Socket x SR Fipt - Stainless Steel Collar**

100 psi Maximum Internal Pressure @ 180°F (82°C) -  
 NSF® Certified Lead Free

4199-005SR	1/2	20	120	036	14.59
4199-007SR	3/4	10	60	036	25.04
4199-010SR	1	10	40	036	41.58

**Union - Gasket Sealed Brass Thread Transition**

**Socket x Gasket Fipt  
 - Use No Thread Sealant**

100 psi Maximum Internal Pressure @ 180°F (82°C) -  
 NSF® Certified Lead Free

4199-005BRG	1/2	20	120	033	24.00
4199-007BRG	3/4	10	60	033	36.18
4199-010BRG	1	10	40	033	62.37

**Transition Compression Adapter**

**Comp w/Gasket x CPVC Spigot**

NSF® Certified Lead Free

TCA-005	1/2	25	200	035	2.97
TCA-007	3/4	25	100	035	3.52

**Transition Union - Brass Compression**

**Brass Comp x CPVC Spigot**

NSF® Certified Lead Free

TUC-005	1/2	150	0	036	19.94
TUC-007	3/4	75	0	036	33.33

**Transition Union - Brass Male Thread**

**Brass Mipt x CPVC Spigot**

NSF® Certified Lead Free

TUM-005	1/2	150	0	036	18.52
TUM-007	3/4	75	0	036	33.75

Part Number	Size	Std Pk	Mstr Ctn	Prod Code	MSRP
-------------	------	--------	----------	-----------	------

**Transition Union - Brass Female Thread**

**Brass Fipt x CPVC Spigot**

NSF® Certified Lead Free

TUF-005	1/2	150	0	036	16.66
TUF-007	3/4	75	0	036	33.68

**CPVC-PEX Transition Spigot Adapters**

**Spigot x PEX Barb-Crimp Style**

CPVC Spigot is also (Socket)  
 NSF® Certified Lead Free

TPC-005	1/2	25	150	036	24.74
TPC-007	3/4 (1/2)	25	100	036	27.89
TPC-010	1 (3/4)	25	50	036	38.74

ASTM F1807 Standard PEX Connector, Stainless Steel

**CPVC-PEX Transition Socket Adapters**

**Socket x PEX Barb-Crimp Style**

CPVC Socket is also (Spigot)  
 NSF® Certified Lead Free

TPC-005-S	1/2 (3/4)	25	150	036	24.74
TPC-007-S	3/4 (1)	25	100	036	27.89
TPC-010-S	1 (1-1/4)	50	300	036	38.74

ASTM F1807 Standard PEX Connector, Stainless Steel

**Water Hammer Arrester**

**Spigot**

NSF® Certified Lead Free

WHA-005	1/2	25	100	035	20.12
---------	-----	----	-----	-----	-------

Part Number	Size	Travel - T	Std Pk	Mstr Ctn	Prod Code	MSRP
-------------	------	------------	--------	----------	-----------	------

**Expansion Joint/Repair Couplings - Socket x Spigot**

**CPVC With EPDM O-Rings**

NSF Certified Lead Free

CTS118-07	3/4	3	30	0	027	15.51
CTS118-10	1	4	24	0	027	17.60

**Unit Must Be Thrust Blocked**  
**T = Repair Coupling Travel**

CTS CPVC Product  
**EverTUFF® CPVC CTS Products**



Part Number	Size	Travel - T	Std Pk	Mstr Ctn	Prod Code	MSRP
-------------	------	------------	--------	----------	-----------	------

**Expansion Joint/Repair Couplings - Socket x Socket**

**CPVC With EPDM O-Rings**

NSF® Certified Lead Free

CTS119-07	3/4	3	30	0	027	15.51
CTS119-10	1	4	24	0	027	17.60

**Unit Must Be Thrust Blocked**  
**T = Repair Coupling Travel**



Part Number	Size	Std Pk	Mstr Ctn	Prod Code	MSRP
-------------	------	--------	----------	-----------	------

**Quarter Turn Angle Supply Stop**

**Socket x NPT**

100 psi @ 180°F (82°C)

Male Thread for Connection to Flexible Supply Line having 1/2" Female NPT Thread Inlet - NSF® Certified Lead Free

7722-005	1/2	50	400	217	11.27
----------	-----	----	-----	-----	-------



**Quarter Turn Angle Supply Stop**

**SR Fipt x NPT**

100 psi @ 180°F (82°C)

Male Thread for Connection to Flexible Supply Line having 1/2" Female NPT Thread Inlet - NSF® Certified Lead Free

7721-005SR	1/2	50	400	217	12.81
------------	-----	----	-----	-----	-------



**Quarter Turn Angle Supply Stop**

**SR Fipt x Comp Thread**

100 psi @ 180°F (82°C)

Male Thread for Connection to Flexible Supply Line having Female 3/8" Compression Thread Inlet - NSF® Certified Lead Free

7721-073SR	1/2X3/8	50	400	217	12.81
------------	---------	----	-----	-----	-------



**Quarter Turn Angle Supply Stop**

**Socket x Comp Thread**

100 psi @ 180°F (82°C)

Male Thread for Connection to Flexible Supply Line having 1/4", 3/8" or 1/2" Female Compression Thread Inlet - NSF® Certified Lead Free

7722CM-072	1/2X1/4	72	0	217	11.27
7722CM-073	1/2X3/8	72	0	217	11.27
7722CM-005	1/2	72	0	217	11.27



Part Number	Size	Std Pk	Mstr Ctn	Prod Code	MSRP
-------------	------	--------	----------	-----------	------

**Quarter Turn Straight Supply Stop**

**Socket x Comp Thread**

100 psi @ 180°F (82°C)

Male Thread for Connection to Flexible Supply Line having Female 3/8" or 1/2" Compression Thread Inlet - NSF® Certified Lead Free

7422CM-073	1/2X3/8	72	0	217	11.27
7422CM-005	1/2	72	0	217	11.27



**Quarter Turn Straight Supply Stop**

**Socket x NPT**

100 psi @ 180°F (82°C)

Male Thread for Connection to Flexible Supply Line having Female 1/2" NPT Thread Inlet - NSF® Certified Lead Free

7422-005	1/2	72	0	217	11.27
----------	-----	----	---	-----	-------



**Ball Valve - Commercial CTS**

**Socket with EPDM O-ring Seal**

100 psi Maximum Internal Pressure @ 180°F (82°C)

NSF® Certified Lead Free

1922-005	1/2	25	200	217	19.11
1922-007	3/4	24	0	217	27.71
1922-010	1	25	0	217	35.52
1922-012	1-1/4	8	0	217	60.49
1922-015	1-1/2	6	0	217	84.35
1922-020	2	4	0	217	107.44



**Ball Valve - Residential CTS**

**Socket x Socket**

100 psi Maximum Internal Pressure @ 180°F (82°C)

NSF® Certified Lead Free

1922R-005	1/2	72	0	217	11.07
1922R-007	3/4	36	0	217	15.76
1922R-010	1	24	0	217	27.42
1922R-012	1-1/4	8	32	217	55.65
1922R-015	1-1/2	6	0	217	65.46
1922R-020	2	4	16	217	85.53



**Stop Valve - Red Handle**

**Socket x Socket**

NSF® Certified Lead Free

8422-005	1/2	36	0	217	13.45
8422-007	3/4	36	0	217	13.45







**CTS CPVC Product**  
**EverTUFF® CPVC CTS Products**

Part Number	Size	Std Pk	Mstr Ctn	Prod Code	MSRP
-------------	------	--------	----------	-----------	------

**Stop Valve - Clear Handle**

**Socket x Socket**



NSF® Certified Lead Free

8422CH-005	1/2	36	0	217	13.45
8422CH-007	3/4	36	0	217	13.45

**Stop & Waste Valve**

**Socket x Socket**



NSF® Certified Lead Free

8422W-005	1/2	36	0	217	14.11
8422W-007	3/4	36	0	217	14.11

**Boiler Drain Valve**

**Socket x MHT**



NSF® Certified Lead Free

82MH-005	1/2	36	0	217	14.11
82MH-007	3/4	36	0	217	14.11

**Pipe - CPVC CTS SDR 11**

**10' Lengths, Priced Per Foot**



NSF® Certified Lead Free

CTS-005	1/2	500	0	034	1.03
CTS-007	3/4	250	0	034	1.85
CTS-010	1	150	0	034	3.80
CTS-012	1-1/4	100	0	034	5.63
CTS-015	1-1/2	100	0	034	7.47
CTS-020	2	50	0	034	12.64

• Pipe sold in bag quantities only - no broken bags • No return on Pipe • Large orders may be shipped directly from Spears® manufacturing facility. Note: Multiple drops may be made on TL shipments. Contact Spears® Regional Distribution Center for requirements and drop-off charges. • See Spears® Manufacturing Company Terms and Conditions of Sale for freight requirements.

**Pipe - CPVC CTS SDR 11**

**20' Lengths, Priced Per Foot**



NSF® Certified Lead Free

CTS-005-20	1/2	1000	0	034	1.03
CTS-007-20	3/4	500	0	034	1.85
CTS-010-20	1	300	0	034	3.80
CTS-012-20	1-1/4	200	0	034	5.63
CTS-015-20	1-1/2	200	0	034	7.47
CTS-020-20	2	100	0	034	12.64

Part Number	Size	Std Pk	Mstr Ctn	Prod Code	MSRP
-------------	------	--------	----------	-----------	------

**Pipe - CPVC CTS Coiled SDR 11**

**100 ft. Coil, Priced Per Foot**



NSF® Certified Lead Free

CTS-005-100	1/2	100	0	034	1.21
CTS-007-100	3/4	100	0	034	2.20
CTS-010-100	1	100	0	034	4.33

**CPVC CTS COILED PIPE WEIGHTS:**

CTS-005-100 Weight per Foot .090 lbs; per Coil Weight 9 lbs.

CTS-007-100 Weight per Foot .149 lbs; per Coil Weight 14.9 lbs.

CTS-010-100 Weight per Foot .239 lbs; per Coil Weight 23.9 lbs.

**WARNING: Banded coils will expand when opened. Exercise caution to avoid injury during banding removal.**

**CTS Tubing Straps**

**Std Pk Bag of 25 For Anchoring CTS Pipe**



Priced Each - Sold in Full Bag Quantity Only

556A	1/2	25	500	299	.40
556B	3/4	25	500	299	.41

**CTS Tube Talon with Nail**

**Std Pk Bag Quantities as Specified. For Anchoring CTS Pipe**



Priced Each - Sold in Full Bag Quantity Only

555A	1/2	100	1000	299	1.15
555B	3/4	100	1000	299	1.75
555C	1	50	500	299	4.92

**Solvent Cement -EverTUFF® CTS One Step**

NSF® Certified Lead Free



CTS5-005	1/4 Pint	24	0	701	9.48
CTS5-010	1/2 Pint	24	0	701	15.09
CTS5-020	Pint	12	0	701	24.45
CTS5-030	Quart	12	0	701	42.55
CTS5-040	Gallon	6	0	701	145.57

**Cap Daubers**

DHP-38	3/8" for 1/2 Pint	50	400	710	1.29
DHP-50	1/2" for 1/2 Pint	50	400	710	1.29
DHP-75	3/4" for 1/2 Pint	50	0	710	1.38
DP-50	1/2" for Pint	50	0	710	1.29
DP-75	3/4" for Pint	50	0	710	1.38



CTS CPVC Product  
**EverTUFF® CPVC CTS Products**



Part Number	Size	Std Pk	Mstr Ctn	Prod Code	MSRP
-------------	------	-----------	-------------	--------------	------

**Cap Daubers (continued)**

DP-125	1-1/4" for Pint	50	0	710	1.66
DQ-50	1/2" for Quart	50	0	710	1.29
DQ-75	3/4" for Quart	50	0	710	1.29
DQ-125	1-1/4" for Quart	50	0	710	1.66

3/8" for pipe to 3/4" • 1/2" for pipe to 1" • 3/4" for pipe to 1-1/2" • 1-1/4" for pipe 1-1/2" to 3"

**Can-Mate Daubers**

**Adjustable Plastic Applicator with Telescoping Stem for use with Standard 1/2 Pint, Pint and Quart Cans**



CM-50	1/2"	50	0	710	5.54
CM-75	3/4"	50	0	710	5.54
CM-150	1-1/4"	50	0	710	5.54

1/2" for pipe to 1" • 3/4" for pipe to 1-1/2" • 1-1/4" for pipe 1-1/2" to 3"

**Deburring Tool**

**Cone Type for pipe from 1/2" through 2"**



DEB-2	1/2" to 2" Pipe	1	6	710	102.85
-------	-----------------	---	---	-----	--------