

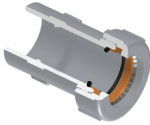
LabWaste® Product
LabWaste® CPVC Corrosive Waste Drainage Systems



Part Number	Size	Std Pk	Mstr Ctn	Prod Code	MSRP
-------------	------	--------	----------	-----------	------

P092 GripLoc™ Transition Coupling -

H x GripLoc™ Compression
WARNING: DO NOT INSERT FINGERS
FKM Gasket



For connection to PP or PVDF systems

P092-015C	1-1/2	1	16	132	56.69
P092-020C	2	1	12	132	75.22

P093 Elastomer Transition Coupling - Glass/IPS Pipe

IPS Clamp Joint x IPS Clamp Joint

For connection to plain end Glass or any same-size IPS pipe systems. Shielded FKM (Fluorocarbon) w/gear clamps.

P093-015	1-1/2	1	20	171	309.15
P093-020	2	16	0	171	321.79
P093-030	3	1	6	171	339.83
P093-040	4	10	0	171	359.58
P093-060	6	5	0	171	406.07



P094 Elastomer Transition Coupling-Duriron

IPS Clamp Joint x Duriron Clamp Joint

For connection to Duriron plain end pipe. Shielded FKM (Fluorocarbon) w/gear clamps.

P094-015	1-1/2	1	20	171	358.17
P094-020	2	10	0	171	370.26
P094-030	3	10	0	171	390.13
P094-040	4	10	0	171	416.21



P095 Duriron Transition Fitting

Mechanical Joint x Pipe Size

For connection to Duriron system. Requires Duriron mechanical joint coupling.

P095-015C	1-1/2	30	0	169	56.65
P095-020C	2	16	0	169	71.69
P095-030C	3	9	0	169	119.65
P095-040C	4	5	0	169	165.36



P096 Grooved Coupling

Grv x Soc

P096-015C	1-1/2	10	60	169	28.39
P096-020C	2	10	80	169	38.19
P096-030C	3	10	0	169	74.83
P096-040C	4	5	0	169	127.34
P096-060C	6	5	0	169	182.17



Part Number	Size	Std Pk	Mstr Ctn	Prod Code	MSRP
-------------	------	--------	----------	-----------	------

P097 Duriron Transition Coupling

Spig x Caulk Joint

For connection to Duriron system. Requires packing and plastic lead. Warning: Do not use hot lead or oiled Oakum

P097-015C	1-1/2	25	0	169	56.65
P097-020C	2	15	0	169	71.69
P097-030C	3	6	0	169	119.65
P097-040C	4	6	0	169	165.36



P098 Glass Transition Coupling

Spig x Clamp

For connection to glass system. Requires use of clamp from glass system manufacturer.

P098-015C	1-1/2	50	0	169	42.51
P098-020C	2	30	0	169	57.36
P098-030C	3	20	0	169	89.72
P098-040C	4	12	0	169	115.77
P098-060C	6	12	0	169	201.01



P099 Transition Coupling

H x Compression

For connection to PP or PVDF systems. Requires Safety Retaining Groove Tool. Contact Spears®.

P099-015C	1-1/2	16	0	169	117.40
P099-020C	2	12	0	169	133.49
P099-030C	3	4	0	169	167.20
P099-040C	4	4	0	169	199.95
P099-060C	6	1	0	169	231.66
P099-080C	8	1	0	169	1603.12



P100 Coupling

H x H

P100-015C	1-1/2	100	0	160	27.91
P100-020C	2	100	0	160	34.83
P100-030C	3	60	0	160	44.57
P100-040C	4	25	0	160	63.43
P100-060C	6	5	0	160	100.53
P100-080C	8	8	0	159	271.12
P100-100C	10	1	0	159	393.14
P100-120C	12	1	0	159	552.41
P100-140C	14	1	0	159	701.43





LabWaste® Product

LabWaste® CPVC Corrosive Waste Drainage Systems

Part Number	Size	Std Pk	Mstr Ctn	Prod Code	MSRP
-------------	------	--------	----------	-----------	------

P101 Female Adapter

Fpt x H

P101-015C	1-1/2	100	0	160	21.95
P101-020C	2	100	0	160	29.91
P101-030C	3	30	0	160	49.36
P101-040C	4	6	0	160	94.87
P101-060C	6	10	0	160	158.93



P102 Increaser - Reducer

H x H

P102-251C	2X1-1/2	25	0	160	54.62
P102-337C	3X1-1/2	25	0	160	57.65
P102-338C	3X2	20	0	160	63.43
P102-420C	4X2	10	0	160	69.72
P102-422C	4X3	20	0	160	76.06
P102-530C	6X3	6	0	160	106.86
P102-532C	6X4	4	0	160	128.61
P102-582C	8X4	2	0	159	235.51
P102-585C	8X6	2	0	159	173.54
P102-624C	10X4	2	0	159	397.56
P102-626C	10X6	1	0	159	425.26
P102-628C	10X8	1	0	159	444.13
P102-666C	12X6	1	0	159	544.27
P102-668C	12X8	1	0	159	616.84
P102-670C	12X10	1	0	159	678.97



P103P Trap Adapter - Male

Spig x Slip with Plastic Nut

P103P-015C	1-1/2	50	0	160	23.21
P103P-020C	2	25	0	160	27.14



P104R Trap Adapter - Female

w/1-1/2 Plastic Nut & Washer and 1-1/2x1-1/4 Washer H x Slip w/Plastic Nut

P104R-015C	1-1/2	50	0	160	25.45
------------	-------	----	---	-----	-------



P104X Trap Adapter - Female

H x Slip w/Chrome Nut & Washer

P104X-015C	1-1/2	50	0	160	27.07
------------	-------	----	---	-----	-------



Part Number	Size	Std Pk	Mstr Ctn	Prod Code	MSRP
-------------	------	--------	----------	-----------	------

P105 Cleanout Adapter

Spig x Fpt

P105-015C	1-1/2	50	0	160	21.95
P105-020C	2	50	0	160	23.47
P105-030C	3	25	0	160	45.24
P105-040C	4	10	0	160	80.83
P105-060C	6	10	0	160	142.25
P105-080C	8	8	0	159	220.08



P105X Cleanout Adapter with Square Head Plug

Spig

P105X-015C	1-1/2	50	0	160	23.12
P105X-020C	2	50	0	160	27.25
P105X-030C	3	25	0	160	50.27
P105X-040C	4	10	0	160	86.49
P105X-060C	6	10	0	160	149.61
P105X-080C	8	6	0	159	407.29



P106 Square Head Cleanout Plug

Mpt

P106-015C	1-1/2	50	400	160	7.99
P106-020C	2	50	0	160	8.74
P106-030C	3	25	0	160	15.26
P106-040C	4	30	0	160	17.12
P106-060C	6	10	0	160	39.95
P106-080C	8	12	0	159	206.49



P107 Flush Bushing

Spig x H

P107-251C	2X1-1/2	50	0	160	29.76
P107-337C	3X1-1/2	30	0	160	31.46
P107-338C	3X2	30	0	160	34.29
P107-420C	4X2	30	0	160	76.11
P107-422C	4X3	30	0	160	77.88
P107-530C ¹	6X3	10	0	160	142.85
P107-532C	6X4	10	0	160	136.24
P107-582C	8X4	4	0	159	495.17
P107-585C	8X6	4	0	159	516.59
P107-624C ¹	10X4	4	0	159	962.19
P107-628C	10X8	3	0	159	757.01
P107-670C	12X10	2	0	159	943.82



¹ Outlet-sized with Bushing

LabWaste® Product
LabWaste® CPVC Corrosive Waste Drainage Systems



Part Number	Size	Std Pk	Mstr Ctn	Prod Code	MSRP
-------------	------	--------	----------	-----------	------

P108 Flush Bushing (Cleanout Adapter)

Spig x FPT



P108-212C	1-1/2X1-1/4	50	200	160	7.07
-----------	-------------	----	-----	-----	------

P109 Male Adapter

Mpt x H



P109-015C	1-1/2	50	0	160	21.72
P109-020C	2	50	0	160	26.28
P109-030C	3	25	0	160	43.21
P109-040C	4	25	0	160	90.08
P109-060C	6	7	0	160	242.20

P110 Counter Sunk Cleanout Plug

Mpt



P110-015C	1-1/2	25	150	160	13.32
P110-020C	2	25	150	160	14.46
P110-030C	3	50	0	160	14.95
P110-040C	4	25	0	160	16.82
P110-060C	6	10	0	160	36.46

P116 Cap

Socket



P116-015C	1-1/2	20	240	160	21.72
P116-020C	2	15	180	160	25.98
P116-030C	3	10	0	160	44.88
P116-040C	4	5	0	160	91.49
P116-060C	6	5	0	160	150.68
P116-080C	8	3	0	159	261.57

P119 No-Hub Adapter

S x H



P119-015C	1-1/2	25	0	160	38.22
P119-020C	2	25	0	160	40.78
P119-030C	3	20	0	160	51.37
P119-040C	4	15	0	160	75.02
P119-060C	6	5	0	160	162.93

P123 Hub Adapter

H x S



For connection to Cast Iron system. Requires packing and plastic lead. Warning: Do not use hot lead or oiled Oakum

P123-020C	2	20	0	160	45.32
-----------	---	----	---	-----	-------

Made in the U.S.A.

Part Number	Size	Std Pk	Mstr Ctn	Prod Code	MSRP
-------------	------	--------	----------	-----------	------

P123 Hub Adapter (continued)

H x S

P123-030C	3	25	0	160	57.08
-----------	---	----	---	-----	-------

P130 Repair Coupling

H x H



P130-015C	1-1/2	25	200	160	29.13
P130-020C	2	25	0	160	17.24
P130-030C	3	10	0	160	57.08
P130-040C	4	5	0	160	95.78

P300 1/4 Bend (90° Ell)

H x H



P300-015C	1-1/2	100	0	160	35.73
P300-020C	2	50	0	160	44.39
P300-030C	3	25	0	160	75.36
P300-040C	4	10	0	160	119.93
P300-060C	6	4	0	160	310.33
P300-080C	8	2	0	159	432.55
P300-100C	10	1	0	159	999.69
P300-120C	12	1	0	159	1676.24

P300S 1/4 Bend w/Side Inlet (90° Ell)

All Hub



P300S-338C	3X3X2	10	0	160	165.76
------------	-------	----	---	-----	--------

P302 1/4 Bend, Street (90° Street Ell)

H x Spig



P302-015C	1-1/2	100	0	160	41.95
P302-020C	2	25	0	160	53.24
P302-030C	3	20	0	160	71.28
P302-040C	4	10	0	160	113.24
P302-060C	6	4	0	160	274.78
P302-080C	8	2	0	159	427.57
P302-100C	10	1	0	159	995.88
P302-120C	12	1	0	159	1659.09

P303 1/4 Bend w/Low Heel Inlet

H x H x H



P303-338C	3X3X2	25	0	160	104.22
P303-420C	4X4X2	6	0	160	215.15



LabWaste® Product

LabWaste® CPVC Corrosive Waste Drainage Systems

Part Number	Size	Std Pk	Mstr Ctn	Prod Code	MSRP
-------------	------	--------	----------	-----------	------



P304 1/4 Bend, Long Sweep (90° LS Ell)

H x H

P304-015C	1-1/2	50	0	160	36.96
P304-020C	2	25	0	160	50.40
P304-030C	3	10	0	160	86.21
P304-040C	4	5	0	160	123.91
P304-060C	6	5	0	160	398.32



P309 1/4 Bend Long Sweep, Street (90° LS Street Ell)

H x Spig

P309-015C	1-1/2	50	0	160	38.87
P309-020C	2	25	0	160	52.11
P309-030C	3	20	0	160	88.73
P309-040C	4	5	0	160	126.08
P309-060C	6	5	0	160	323.32



P319 1/6 Bend (60° Ell)

H x H

P319-015C	1-1/2	40	0	160	35.81
P319-020C	2	25	0	160	43.23
P319-030C	3	20	0	160	78.11
P319-040C	4	10	0	160	125.22
P319-060CF	6	1	4	160	351.96



P320 1/6 Bend, Street (60° Street Ell)

H x Spig

P320-015C	1-1/2	40	0	160	35.81
P320-020C	2	25	0	160	43.23
P320-030C	3	20	0	160	78.92
P320-040C	4	10	0	160	125.22



P321 1/8 Bend (45° Ell)

H x H

P321-015C	1-1/2	100	0	160	35.09
P321-020C	2	50	0	160	42.77
P321-030C	3	25	0	160	78.47
P321-040C	4	15	0	160	88.94
P321-060C	6	5	0	160	259.78
P321-080C	8	1	0	159	374.57
P321-100C	10	1	0	159	714.19
P321-120C	12	1	0	159	1293.93

Part Number	Size	Std Pk	Mstr Ctn	Prod Code	MSRP
-------------	------	--------	----------	-----------	------



P323 1/8 Bend, Street (45° Street Ell)

H x Spig

P323-015C	1-1/2	100	0	160	26.59
P323-020C	2	50	0	160	30.20
P323-030C	3	25	0	160	66.93
P323-040C	4	10	0	160	68.68
P323-060C	6	5	0	160	246.78
P323-080C	8	1	0	159	284.24



P324 1/16 Bend (22-1/2° Ell)

H x H

P324-015C	1-1/2	50	0	160	35.81
P324-020C	2	25	0	160	42.69
P324-030C	3	20	0	160	77.19
P324-040C	4	15	0	160	95.08
P324-060C	6	3	0	160	257.33
P324-080C	8	2	0	159	279.31



P326 1/16 Bend, Street (22-1/2° Street Ell)

H x Spig

P326-015C	1-1/2	50	0	160	31.85
P326-020C	2	25	0	160	42.69
P326-030C	3	20	0	160	77.19
P326-040C	4	10	0	160	95.08
P326-060C	6	5	0	160	221.42
P326-080C	8	2	0	159	268.33



P327 Double 1/4 Bend (3 Way Ell)

All Hub

P327-015C	1-1/2	20	0	160	72.11
P327-020C	2	25	0	160	126.02
P327-030C	3	15	0	160	161.09
P327-040C	4	6	0	160	176.33
P327-241C	2X1-1/2X1-1/2	25	0	160	116.42



P331 Vent Ell

H x H

P331-015C	1-1/2	25	0	160	35.41
P331-020C	2	30	0	160	41.52
P331-030C	3	25	0	160	71.83
P331-040C	4	10	0	160	115.20
P331-060C	6	5	0	160	178.67

LabWaste® Product
LabWaste® CPVC Corrosive Waste Drainage Systems



Part Number	Size	Std Pk	Mstr Ctn	Prod Code	MSRP
-------------	------	--------	----------	-----------	------

P333 Vent Ell, Street

H x Spig



P333-015C	1-1/2	25	0	160	37.87
P333-020C	2	20	0	160	44.82
P333-030C	3	25	0	160	79.81
P333-040C	4	10	0	160	127.99

P400 Sanitary Tee

All Hub



P400-015C	1-1/2	100	0	160	44.39
P400-020C	2	30	0	160	53.16
P400-030C	3	30	0	160	106.40
P400-040C	4	5	0	160	159.37
P400-060C	6	6	0	160	451.54
P400-080C	8	2	0	159	740.21
P400-100C	10	1	0	159	1660.46
P400-120C	12	1	0	159	2339.92

P401 Sanitary Tee, Reducing

All Hub



P401-241C	2X1-1/2X1-1/2	25	0	160	53.07
P401-251C	2X2X1-1/2	50	0	160	53.07
P401-257C	2X1-1/2X2	25	0	160	55.47
P401-337C	3X3X1-1/2	10	0	160	92.35
P401-338C	3X3X2	10	0	160	99.28
P401-420C	4X4X2	10	0	160	142.39
P401-422C	4X4X3	10	0	160	148.77
P401-532C	6X4	4	0	160	371.98
P401-582C	8X4	2	0	159	872.75

P403 Sanitary Tee, Street

S x H x H



P403-015C	1-1/2	20	0	160	52.21
P403-020C	2	25	0	160	63.31
P403-030C	3	30	0	160	126.35
P403-040C	4	10	0	160	189.71
P403-060C	6	6	0	160	518.36
P403-080C	8	2	0	159	846.57
P403-100C	10	1	0	159	2016.73
P403-120C	12	1	0	159	2886.62

P404 Sanitary Tee, Street, Reducing

S x H x H



P404-241C	2X1-1/2X1-1/2	50	0	160	54.12
-----------	---------------	----	---	-----	-------

Part Number	Size	Std Pk	Mstr Ctn	Prod Code	MSRP
-------------	------	--------	----------	-----------	------

P404 Sanitary Tee, Street, Reducing (continued)

S x H x H

P404-251C	2X1-1/2	50	0	160	58.51
P404-337C	3X3X1-1/2	10	0	160	103.44
P404-338C	3X3X2	10	0	160	110.33

P428 Double Sanitary Tee

All Hub



P428-015C	1-1/2	25	0	160	66.87
P428-020C	2	25	0	160	78.85
P428-030C	3	8	0	160	105.46
P428-040C	4	6	0	160	140.75

P429 Double Sanitary Tee, Reducing

All Hub



P429-241C	2X1-1/2X1-1/2X1-1/2	25	0	160	87.98
P429-251C	2X2X1-1/2X1-1/2	25	0	160	88.08
P429-337C	3X3X1-1/2X1-1/2	6	0	160	136.82
P429-338C	3X3X2X2	10	0	160	148.21
P429-419C	4X4X1-1/2X1-1/2	7	0	160	146.56
P429-420C	4X4X2X2	7	0	160	148.64
P429-422C	4X4X3X3	8	0	160	164.11

P441 Vent Tee

All Hub



P441-015C	1-1/2	25	0	160	84.80
P441-020C	2	25	0	160	86.88
P441-030C	3	10	0	160	111.77
P441-040C	4	5	0	160	157.82
P441-060C	6	4	0	160	386.20
P441-080C	8	2	0	159	760.67

P444X Cleanout Tee w/Plug

H x H x Fpt



P444X-015C	1-1/2	20	0	160	52.85
P444X-020C	2	10	0	160	58.39
P444X-030C	3	10	0	160	122.42
P444X-040C	4	10	0	160	166.73
P444X-060C	6	2	0	160	450.27

P445 Cleanout Tee

H x H x Fpt



P445-015C	1-1/2	20	0	160	44.83
P445-020C	2	25	0	160	49.65
P445-030C	3	10	0	160	107.17

Made in the U.S.A.

Suitable for Oil-Free air handling to 25 psi, not for distribution of compressed air or gas
 See MSRP-1 Sheet or Check Spears® On-line Catalog @ www.spearsmfg.com for Pricing



LabWaste® Product

LabWaste® CPVC Corrosive Waste Drainage Systems

Part Number	Size	Std Pk	Mstr Ctn	Prod Code	MSRP
-------------	------	--------	----------	-----------	------

P445 Cleanout Tee (continued)

H x H x Fpt

P445-040C	4	10	0	160	149.61
P445-060C	6	3	0	160	470.20

P445X Cleanout Tee with Counter Sunk Plug

H x H

P445X-015C	1-1/2	20	0	160	52.85
P445X-020C	2	10	0	160	58.39
P445X-030C	3	10	0	160	122.42
P445X-040C	4	10	0	160	166.73
P445X-060C	6	2	0	160	504.04

P448 2-WAY Cleanout

All Hub

P448-030C	3	12	0	160	181.07
P448-040C	4	5	0	160	255.05

P500 Double Fixture Fitting

All Hub

P500-020C	2X2X2X2	10	0	160	103.16
P500-030C	3X3X3X3	10	0	160	212.68
P500-241C	2X1-1/2X1-1/2X1-1/2	20	0	160	93.29
P500-251C	2X2X1-1/2X1-1/2	20	0	160	95.72
P500-338C	3X2X3X3	10	0	160	193.57

P501 Combo Wye + 1/8 Bend (Long Turn Tee Wye)

All Hub

P501-015C	1-1/2	50	0	160	59.06
P501-020C	2	20	0	160	78.82
P501-030C	3	10	0	160	125.83
P501-040C	4	8	0	160	178.72

P502 Combination Wye + 1/8 Bend Reducing (Long Turn Tee Wye)

All Hub

P502-251C	2X2X1-1/2	20	0	160	70.96
P502-337C	3X3X1-1/2	15	0	160	104.66
P502-338C	3X3X2	10	0	160	113.38
P502-420C	4X4X2	5	0	160	156.99
P502-422C	4X4X3	5	0	160	164.72
P502-578C	8X8X2	1	0	159	403.60

Part Number	Size	Std Pk	Mstr Ctn	Prod Code	MSRP
-------------	------	--------	----------	-----------	------

P503 Combination Wye and 1/8 Bend (Two Piece)

All Hub

P503-060C	6	4	0	160	483.05
P503-080C	8	1	0	159	888.80
P503-100C	10	1	0	159	1157.15

P504 Combination Wye and 1/8 Bend, Reducing (Two Piece)

All Hub

P504-241C	2X1-1/2X1-1/2	5	0	160	91.91
P504-528C ¹	6X2	5	0	160	326.89
P504-530C	6X3	5	0	160	365.62
P504-532C	6X4	5	0	160	379.71
P504-582C	8X4	2	0	159	587.84
P504-585C	8X6	1	0	159	596.68
P504-623C ¹	10X3	1	0	159	725.81
P504-624C	10X4	1	0	159	780.07
P504-626C	10X6	1	0	159	817.95
P504-628C	10X8	1	0	159	912.54
P504-664C	12X4	1	0	159	1724.68
P504-668C ¹	12X8	1	0	159	1515.31
P504-670C	12X10	1	0	159	1744.32

¹ Sized with Bushing

P507 Double Combination Wye and 1/8 Bend

All Hub

P507-020C	2	10	0	160	155.82
P507-030C	3	10	0	160	267.80
P507-040C	4	5	0	160	507.46
P507-060C	6	2	0	160	1148.66
P507-338C	3X3X2X2	10	0	160	224.51
P507-422C	4X4X3X3	5	0	160	281.13
P507-530C	6X6X3X3	2	0	160	596.48
P507-532C	6X6X4X4	1	0	160	680.68

P600 45° Wye

All Hub

P600-015C	1-1/2	45	0	160	45.24
P600-020C	2	25	0	160	63.46
P600-030C	3	8	0	160	113.12
P600-040C	4	8	0	160	164.88
P600-060C	6	4	0	160	418.58
P600-080C	8	1	0	159	455.60
P600-100C	10	1	0	159	717.14
P600-120C	12	1	0	159	1573.11

LabWaste® Product
LabWaste® CPVC Corrosive Waste Drainage Systems



Part Number	Size	Std Pk	Mstr Ctn	Prod Code	MSRP
-------------	------	--------	----------	-----------	------

P601 45° Wye, Reducing

All Hub



P601-241C	2X1-1/2X1-1/2	25	0	160	64.27
P601-251C	2X2X1-1/2	25	0	160	63.46
P601-257C	2X1-1/2X2	10	0	160	63.46
P601-337C	3X3X1-1/2	15	0	160	97.39
P601-338C	3X3X2	12	0	160	105.45
P601-419C	4X4X1-1/2	10	0	160	143.19
P601-420C	4X4X2	10	0	160	151.77
P601-422C	4X4X3	10	0	160	158.26
P601-528C ¹	6X6X2	5	0	160	309.37
P601-530C	6X6X3	6	0	160	268.88
P601-532C	6X6X4	5	0	160	271.81
P601-580C	8X8X3	2	0	159	309.41
P601-582C	8X8X4	2	0	159	316.63
P601-585C	8X8X6	1	0	159	352.39
P601-624C ¹	10X10X4	1	0	159	777.82
P601-626C	10X10X6	1	0	159	626.01
P601-628C	10X10X8	1	0	159	651.05
P601-661C ¹	12X12X2	1	0	159	1908.43
P601-663C ¹	12X12X3	1	0	159	1924.97
P601-664C ¹	12X12X4	1	0	159	1929.47
P601-666C ¹	12X12X6	1	0	159	1935.96
P601-668C ¹	12X12X8	1	0	159	2055.57
P601-670C ¹	12X10	1	0	159	2004.32

¹ Sized with Bushing

P611 Double Wye

All Hub



P611-015C	1-1/2	40	0	160	84.91
P611-020C	2	20	0	160	89.75
P611-030C	3	15	0	160	162.24
P611-040C	4	5	0	160	370.09
P611-060C	6	2	0	160	643.61

P612 Double Wye, Reducing

All Hub



P612-241C	2X1-1/2X1-1/2X1-1/2	10	0	160	132.28
P612-251C	2X2X1-1/2X1-1/2	10	0	160	134.66
P612-337C	3X3X1-1/2X1-1/2	10	0	160	150.14
P612-338C	3X3X2X2	15	0	160	165.72
P612-420C	4X4X2X2	5	0	160	320.91
P612-422C	4X4X3X3	5	0	160	327.85
P612-532C	6X6X4X4	5	0	160	554.81

Part Number	Size	Std Pk	Mstr Ctn	Prod Code	MSRP
-------------	------	--------	----------	-----------	------

P335 Trap Elbow (for use with Traps only)

H x S



P335-030C	3	30	0	160	89.45
P335-040C	4	25	0	160	207.67

P700 Return Bend

H x H



P700-015C	1-1/2	20	0	160	59.21
P700-020C	2	35	0	160	82.69
P700-030C	3	8	0	160	123.03
P700-040C	4	6	0	160	234.37
P700-060C	6	2	0	160	339.84
P700-080C	8	1	0	159	459.80

P704P Tail Piece Adapter

Spig x Slip w/Plastic Nut



P704P-015C	1-1/2	25	0	160	23.21
------------	-------	----	---	-----	-------

P705 S-Trap

H x H



P705-015C	1-1/2	25	0	160	92.89
P705-020C	2	25	0	160	129.63
P705-030C	3	10	0	160	236.15
P705-040C	4	5	0	160	427.29

P705R Running Trap

H x H



P705R-015C	1-1/2	25	0	160	92.89
P705R-020C	2	25	0	160	129.63
P705R-030C	3	10	0	160	236.15
P705R-040C	4	5	0	160	426.83

P706X P-Trap

H x H



P706X-015C	1-1/2	25	0	160	69.66
P706X-020C	2	25	0	160	97.21
P706X-030C	3	10	0	160	176.46
P706X-040C	4	4	0	160	313.66
P706X-060C	6	1	0	160	931.01
P706X-080C	8	1	0	159	1100.85
P706X-100C	10	1	0	159	1754.26



LabWaste® Product

LabWaste® CPVC Corrosive Waste Drainage Systems

Part Number	Size	Std Pk	Mstr Ctn	Prod Code	MSRP
-------------	------	--------	----------	-----------	------

P706X P-Trap (continued)

H x H

P706X-120C	12	1	0	159	1971.19
------------	----	---	---	-----	---------



P707X P-Trap w/Cleanout

H x H

P707X-015C	1-1/2	10	0	160	77.95
------------	-------	----	---	-----	-------



P708P P-Trap w/Plastic Nut (Union Connection)

H x H

P708P-015C	1-1/2	25	0	160	60.66
P708P-020C	2	25	0	160	105.06



P711P L.A Pattern P-Trap w/Plastic Nut

(Union Connection w/Slip Joint)
Slip x H w/Plastic Nut

P711P-015C	1-1/2	25	0	160	132.60
------------	-------	----	---	-----	--------



P712 Jar Trap

Spigot x H

32 oz. PP Jar

P712-015C	1-1/2	1	0	169	119.88
-----------	-------	---	---	-----	--------



P712P Jar Trap w/Tail Piece Adapter

Slip x H

32 oz. PP Jar

P712P-015C	1-1/2	1	0	169	143.08
------------	-------	---	---	-----	--------



P720 Drum Trap

H x H

P720-015C	1-1/2	4	0	160	291.25
P720-020C	2	4	0	160	461.34
P720-030C	3	4	0	160	639.16
P720-040C	4	4	0	160	733.53



Flange, Van Stone Style CPVC

Soc

854-015C	1-1/2	20	0	090	43.11
854-020C	2	10	0	090	52.20
854-030C	3	10	0	090	113.22
854-040C	4	5	0	090	152.89

Part Number	Size	Std Pk	Mstr Ctn	Prod Code	MSRP
-------------	------	--------	----------	-----------	------

Flange, Van Stone Style CPVC (continued)

Soc

854-060C	6	5	0	090	260.54
854-080C	8	2	0	090	783.92
854-100C	10	2	0	091	1887.17
854-120C	12	2	0	091	2831.77
854-140C	14	1	0	095	3190.93
854-160C	16	1	0	095	3988.67

Waste Assembly

Sink Outlet

LWWA-1	1-1/2	10	0	169	105.79
--------	-------	----	---	-----	--------

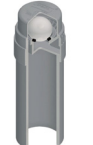


LabWaste® Air Admittance Valve

Spigot

Maximum 6 DFU (Drainage Fixture Units)

AAV-015C	1-1/2	12	0	286	61.39
----------	-------	----	---	-----	-------



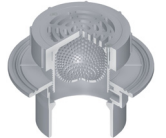
LW1500 Floor Drain with CPVC Adjustable Top w/5" Round Grate

LW1500-015C	1-1/2X5	4	0	169	427.36
LW1500-020C	2X5	4	0	169	427.36
LW1500-030C	3X5	4	0	169	427.36
LW1500-040C	4X5	4	0	169	427.36



LW1520 Floor Drain with CPVC Adjustable Top w/5" Round Grate & Strainer

LW1520-015C	1-1/2X5	3	0	169	488.64
LW1520-020C	2X5	3	0	169	488.64
LW1520-030C	3X5	3	0	169	488.64
LW1520-040C	4X5	3	0	169	488.64



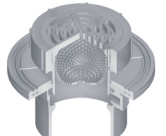
LW150M Floor Drain with CPVC Adjustable Top w/5" Round Grate & Membrane Collar

LW150M-015C	1-1/2X5	4	0	169	474.14
LW150M-020C	2X5	4	0	169	474.14
LW150M-030C	3X5	4	0	169	474.14
LW150M-040C	4X5	4	0	169	474.14



LW152M Floor Drain with CPVC Adjustable Top w/5" Round Grate, Strainer & Membrane Collar

LW152M-015C	1-1/2X5	4	0	169	533.78
-------------	---------	---	---	-----	--------



LabWaste® Product
LabWaste® CPVC Corrosive Waste Drainage Systems



Part Number	Size	Std Pk	Mstr Ctn	Prod Code	MSRP
-------------	------	--------	----------	-----------	------

LW152M Floor Drain with CPVC Adjustable Top w/5" Round Gate, Strainer & Membrane Collar (continued)

LW152M-020C	2X5	4	0	169	533.78
LW152M-030C	3X5	4	0	169	533.78
LW152M-040C	4X5	4	0	169	533.78



Floor Drain with Stainless Steel Adjustable Top w/Round Gate

LW1500-015S	1-1/2X5	4	0	169	451.54
LW1600-015S	1-1/2X6	4	0	169	472.52
LW1700-015S	1-1/2X7	4	0	169	503.16
LW1800-015S	1-1/2X8	4	0	169	656.35
LW1500-020S	2X5	4	0	169	451.54
LW1600-020S	2X6	4	0	169	472.52
LW1700-020S	2X7	4	0	169	503.16
LW1800-020S	2X8	4	0	169	656.35
LW1500-030S	3X5	4	0	169	451.54
LW1600-030S	3X6	4	0	169	472.52
LW1700-030S	3X7	2	0	169	503.16
LW1800-030S	3X8	4	0	169	656.35
LW1500-040S	4X5	4	0	169	451.54
LW1600-040S	4X6	4	0	169	472.52
LW1700-040S	4X7	4	0	169	503.16
LW1800-040S	4X8	4	0	169	656.35



Floor Drain with Stainless Steel Adjustable Top w/Round Gate & Membrane Collar

LW150M-015S	1-1/2X5	4	0	169	498.31
LW160M-015S	1-1/2X6	4	0	169	519.26
LW170M-015S	1-1/2X7	4	0	169	549.93
LW180M-015S	1-1/2X8	4	0	169	703.12
LW150M-020S	2X5	1	5	169	498.31
LW160M-020S	2X6	4	0	169	519.26
LW170M-020S	2X7	4	0	169	549.93
LW180M-020S	2X8	4	0	169	703.12
LW150M-030S	3X5	4	0	169	498.31
LW160M-030S	3X6	4	0	169	519.26
LW170M-030S	3X7	4	0	169	549.93
LW180M-030S	3X8	2	0	169	703.12
LW150M-040S	4X5	4	0	169	498.31
LW160M-040S	4X6	4	0	169	519.26
LW170M-040S	4X7	4	0	169	549.93
LW180M-040S	4X8	4	0	169	703.12



LW1510 Floor Cleanout w/Stainless Steel Adjustable Round Top & Solid Access Cover

LW1510-015S	1-1/2X5	4	0	169	483.79
LW1510-020S	2X5	6	0	169	483.79

Part Number	Size	Std Pk	Mstr Ctn	Prod Code	MSRP
-------------	------	--------	----------	-----------	------

LW1510 Floor Cleanout w/Stainless Steel Adjustable Round Top & Solid Access Cover (continued)

LW1510-030S	3X5	4	0	169	483.79
LW1510-040S	4X5	4	0	169	483.79



LW151M Floor Cleanout w/Stainless Steel Adjustable Round Top, Solid Access Cover & Membrane Collar

LW151M-015S	1-1/2X5	4	0	169	516.06
LW151M-020S	2X5	4	0	169	516.06
LW151M-030S	3X5	4	0	169	516.06
LW151M-040S	4X5	4	0	169	516.06

LWTP CPVC Tail Piece

May be cut to desired length



LWTP-015060	1-1/2X6	10	0	169	44.21
LWTP-015120	1-1/2X12	20	0	169	66.32
LWTP-015140	1-1/2X14	50	0	169	82.18

LWTPN CPVC Tail Piece with Nut

May be cut to desired length



LWTPN-015060	1-1/2X6	1	25	169	55.79
LWTPN-015120	1-1/2X12	1	25	169	77.89
LWTPN-015140	1-1/2X14	1	25	169	89.23

Pipe - LabWaste® CPVC

10' Lengths, Price Per Foot



May be cut to desired length

LW-015	1-1/2	10	0	161	8.13
LW-020	2	10	0	161	11.00
LW-030	3	10	0	161	19.88
LW-040	4	10	0	161	28.23
LW-060	6	10	0	161	50.96
LW-080	8	10	0	157	98.45
LW-100	10	10	0	157	159.41
LW-120	12	10	0	157	210.59
LW-140	14	10	0	158	256.82
LW-160	16	10	0	158	335.17
LW-180	18	10	0	158	463.61
LW-200	20	10	0	158	922.31
LW-240	24	10	0	158	1283.29

Pipe Extenders, LabWaste®

Pipe O.D. Spigot x Pipe I.D. Spigot



S0301-15C	1-1/2	50	0	169	6.45
-----------	--------------	----	---	-----	------



LabWaste® Product

LabWaste® CPVC Corrosive Waste Drainage Systems

Part Number	Size	Std Pk	Mstr Ctn	Prod Code	MSRP
-------------	------	--------	----------	-----------	------

Pipe Extenders, LabWaste® (continued)

Pipe O.D. Spigot x Pipe I.D. Spigot

S0301-20C	2	25	0	169	10.40
S0301-30C	3	25	0	169	22.60
S0301-40C	4	20	0	169	34.05



LW-5 LabWaste® One-Step CPVC Cement

LW5-020	Pint	12	0	704	45.51
LW5-030	Quart	12	0	704	60.67
LW5-040	Gallon	6	0	704	246.82
LW5-050	5 Gallon	1	0	704	1234.15

AVERAGE NUMBER OF JOINTS Per Quart of Solvent Cement

PIPE DIAMETER	NUMBER OF JOINTS
1/2"	300
3/4"	200
1"	125
1-1/2"	90
2"	60
3"	40
4"	30
6"	10
8"	5
10"	2-3
12"	1-2

These figures are based on laboratory tests. Due to many field variations, these should be used as a **general guide** only.



Cement Empty Cans

MT-654	Pint	192	0	710	5.50
MT-651	Quart	100	0	710	7.14
MT-653	Quart	12	0	710	8.36
MT-647	Gallon	40	0	710	16.88
MT-648	Gallon	40	0	710	18.72

MT-647, MT-651 & MT-654 have 1-3/4" Screw Neck
 MT-648 has 2-7/8" Screw Neck
 MT-653 is Paint-Type Can

Cement Brush

For Pint and Quart Cans

KD-110	4-1/2" Length	25	0	710	9.59
KD-112	5-1/2" length	25	0	710	9.59

1" Brush w/1-3/4" Screw Cap, for pipe size 3/4" - 2"



Cement Cap Swab

5020	4" Length	24	0	710	14.89
------	-----------	----	---	-----	-------



Part Number	Size	Std Pk	Mstr Ctn	Prod Code	MSRP
-------------	------	--------	----------	-----------	------

Cement Cap Swab (continued)

Fits 1-3/4" Neck Quart Cans (MT-651). 4" length for pipe size 3" to 8"



Cement Large Mouth Can Swab

4020	4" Length	24	0	710	21.96
------	-----------	----	---	-----	-------

Fits 2-7/8" Neck Gallon Can MT-648



Cement Swab with Heavy Handle

4520	4" length	12	0	710	18.59
------	-----------	----	---	-----	-------

For Pipe Sizes 6" & Larger



Cement Roller

3020	3" length	20	0	710	16.03
------	-----------	----	---	-----	-------

Fits Paint Type Quart Can (MT-653). For use with pipe sizes 3" to 6"



Cement Large Roller

7020	7" length	20	0	710	19.97
------	-----------	----	---	-----	-------

Fits 2-7/8" Neck Gallon Can MT-648



Cement Roller with Heavy Handle

Replaceable Cover

5520	4" length	12	0	710	15.17
6520	6" length	12	0	710	18.59

For Pipe Sizes 6" & Larger



Cement Cap Dauber

DP-75	3/4" for Pint	50	0	710	1.31
DP-125	1-1/4" for Pint	50	0	710	1.58
DQ-125	1-1/4" for Quart	50	0	710	1.58

DP Fits Pint Cans

DQ Fits Quart Cans



Cement Can-Mate Dauber

CM-75	3/4"	50	0	710	5.26
-------	------	----	---	-----	------

LabWaste® CPVC Corrosive Waste Drainage Systems



Part Number	Size	Std Pk	Mstr Ctn	Prod Code	MSRP
-------------	------	--------	----------	-----------	------

Cement Can-Mate Dauber (continued)

CM-150	1-1/4"	50	0	710	5.26
--------	--------	----	---	-----	------

3/4" Diameter for pipe size to 1-1/2"
 1-1/4" Diameter for pipe size 1-1/2" to 3"