



LabWaste® Product

LabWaste® CPVC Corrosive Waste Drainage Systems

# LabWaste® CPVC Corrosive Waste Drainage Systems



## PRODUCT

Contact Spears® for any Information not found.



Part Number	Size	Std Pk	Mstr Ctn	Prod Code	MSRP
-------------	------	--------	----------	-----------	------

**P092 GripLoc™ Transition Coupling -**

**H x GripLoc™ Compression**  
**WARNING: DO NOT INSERT FINGERS**  
**FKM Gasket**



For connection to PP or PVDF systems

P092-015C	1-1/2	1	16	132	59.67
P092-020C	2	1	12	132	79.18

**P093 Elastomer Transition Coupling - Glass/IPS Pipe**

**IPS Clamp Joint x IPS Clamp Joint**



For connection to plain end Glass or any same-size IPS pipe systems. Shielded FKM (Fluorocarbon) w/gear clamps.

P093-015	1-1/2	20	0	171	325.42
P093-020	2	16	0	171	338.73
P093-030	3	6	0	171	357.72
P093-040	4	10	0	171	378.51
P093-060	6	5	0	171	427.44
P093-080	8	5	0	171	546.20

**P094 Elastomer Transition Coupling-Duriron**

**IPS Clamp Joint x Duriron Clamp Joint**



For connection to Duriron plain end pipe. Shielded FKM (Fluorocarbon) w/gear clamps.

P094-015	1-1/2	20	0	171	377.02
P094-020	2	10	0	171	389.75
P094-030	3	10	0	171	410.66
P094-040	4	10	0	171	438.12

**P095 Duriron Transition Fitting**

**Mechanical Joint x Pipe Size**



For connection to Duriron system. Requires Duriron mechanical joint coupling.

P095-015C	1-1/2	30	0	169	59.63
P095-020C	2	16	0	169	75.46
P095-030C	3	9	0	169	125.95
P095-040C	4	5	0	169	174.06

**P096 Grooved Coupling**

**Grv x Soc**



P096-015C	1-1/2	10	60	169	29.88
P096-020C	2	10	80	169	40.20
P096-030C	3	10	0	169	78.77
P096-040C	4	5	0	169	134.04
P096-060C	6	5	0	169	191.76

Part Number	Size	Std Pk	Mstr Ctn	Prod Code	MSRP
-------------	------	--------	----------	-----------	------

**P097 Duriron Transition Coupling**

**Spig x Caulk Joint**



For connection to Duriron system. Requires packing and plastic lead. Warning: Do not use hot lead or oiled Oakum

P097-015C	1-1/2	25	0	169	59.63
P097-020C	2	15	0	169	75.46
P097-030C	3	6	0	169	125.95
P097-040C	4	6	0	169	174.06

**P098 Glass Transition Coupling**

**Spig x Clamp**



For connection to glass system. Requires use of clamp from glass system manufacturer.

P098-015C	1-1/2	50	0	169	44.75
P098-020C	2	30	0	169	60.38
P098-030C	3	20	0	169	94.44
P098-040C	4	12	0	169	121.86
P098-060C	6	12	0	169	211.59

**P099 Transition Coupling**

**H x Compression**



For connection to PP or PVDF systems. Requires Safety Retaining Groove Tool. Contact Spears®.

P099-015C	1-1/2	16	0	169	123.58
P099-020C	2	12	0	169	140.52
P099-030C	3	4	0	169	176.00
P099-040C	4	4	0	169	210.47
P099-060C	6	1	0	169	243.85
P099-080C	8	1	0	169	1687.49

**P100 Coupling**

**H x H**



P100-015C	1-1/2	100	0	160	29.38
P100-020C	2	100	0	160	36.66
P100-030C	3	60	0	160	46.92
P100-040C	4	25	0	160	66.77
P100-060C	6	5	0	160	105.82
P100-080C	8	8	0	159	285.39
P100-100C	10	1	0	159	413.83
P100-120C	12	1	0	159	581.48
P100-140C	14	1	0	159	738.35



LabWaste® Product

# LabWaste® CPVC Corrosive Waste Drainage Systems

Part Number	Size	Std Pk	Mstr Ctn	Prod Code	MSRP
-------------	------	--------	----------	-----------	------

## P101 Female Adapter

Fpt x H



P101-015C	1-1/2	100	0	160	23.11
P101-020C	2	100	0	160	31.48
P101-030C	3	30	0	160	51.96
P101-040C	4	6	0	160	99.86
P101-060C	6	10	0	160	167.29
P101-080C	8	3	0	160	262.47

Part Number	Size	Std Pk	Mstr Ctn	Prod Code	MSRP
-------------	------	--------	----------	-----------	------

## P105 Cleanout Adapter

Spig x Fpt



P105-015C	1-1/2	50	0	160	23.11
P105-020C	2	50	0	160	24.71
P105-030C	3	25	0	160	47.62
P105-040C	4	10	0	160	85.08
P105-060C	6	10	0	160	149.74
P105-080C	8	8	0	159	231.66

## P102 Increaser - Reducer

H x H



P102-251C	2X1-1/2	25	0	160	57.49
P102-337C	3X1-1/2	25	0	160	60.68
P102-338C	3X2	20	0	160	66.77
P102-420C	4X2	10	0	160	73.39
P102-422C	4X3	20	0	160	80.06
P102-530C	6X3	6	0	160	112.48
P102-532C	6X4	4	0	160	135.38
P102-582C	8X4	2	0	159	247.91
P102-585C	8X6	2	0	159	182.67
P102-624C	10X4	2	0	159	418.48
P102-626C	10X6	1	0	159	447.64
P102-628C	10X8	1	0	159	467.51
P102-664CF	12X4	1	0	159	1297.54
P102-666C	12X6	1	0	159	572.92
P102-668C	12X8	1	0	159	649.31
P102-670C	12X10	1	0	159	714.71

## P105X Cleanout Adapter with Square Head Plug

Spig



P105X-015C	1-1/2	50	0	160	24.34
P105X-020C	2	50	0	160	28.68
P105X-030C	3	25	0	160	52.92
P105X-040C	4	10	0	160	91.04
P105X-060C	6	10	0	160	157.48
P105X-080C	8	8	0	159	428.73

## P106 Square Head Cleanout Plug

Mpt



P106-015C	1-1/2	50	400	160	8.41
P106-020C	2	50	0	160	9.20
P106-030C	3	25	0	160	16.06
P106-040C	4	30	0	160	18.02
P106-060C	6	10	0	160	42.05
P106-080C	8	12	0	159	217.36

## P103P Trap Adapter - Male

Spig x Slip with Plastic Nut



P103P-015C	1-1/2	50	0	160	24.43
P103P-020C	2	25	0	160	28.57

## P104R Trap Adapter - Female

w/1-1/2 Plastic Nut & Washer and 1-1/2x1-1/4 Washer H x Slip w/Plastic Nut



P104R-015C	1-1/2	50	0	160	26.79
------------	-------	----	---	-----	-------

## P104X Trap Adapter - Female

H x Slip w/Chrome Nut & Washer



P104X-015C	1-1/2	50	0	160	28.49
------------	-------	----	---	-----	-------

## P107 Flush Bushing

Spig x H



P107-251C	2X1-1/2	50	0	160	31.33
P107-337C	3X1-1/2	30	0	160	33.12
P107-338C	3X2	30	0	160	36.09
P107-420C	4X2	30	0	160	80.12
P107-422C	4X3	30	0	160	81.98
P107-530C <sup>1</sup>	6X3	10	0	160	150.37
P107-532C	6X4	10	0	160	143.41
P107-582C	8X4	4	0	159	521.23
P107-585C	8X6	4	0	159	543.78
P107-623C <sup>1</sup>	10X3	4	0	159	832.99
P107-624C <sup>1</sup>	10X4	4	0	159	1012.83
P107-626C	10X6	3	0	159	767.66
P107-628C	10X8	3	0	159	796.85
P107-664C <sup>1</sup>	12X4	1	2	159	1336.08
P107-666C <sup>1</sup>	12X6	3	0	159	1944.77
P107-668C	12X8	2	0	159	833.08
P107-670C	12X10	2	0	159	993.49



Part Number	Size	Std Pk	Mstr Ctn	Prod Code	MSRP
-------------	------	--------	----------	-----------	------

**P107 Flush Bushing (continued)**

**Spig x H**

<sup>1</sup> Outlet-sized with Bushing

**P108 Flush Bushing (Cleanout Adapter)**

**Spig x FPT**



P108-212C	1-1/2X1-1/4	50	200	160	7.44
-----------	-------------	----	-----	-----	------

**P109 Male Adapter**

**Mpt x H**



P109-015C	1-1/2	50	0	160	22.86
P109-020C	2	50	0	160	27.66
P109-030C	3	25	0	160	45.48
P109-040C	4	25	0	160	94.82
P109-060C	6	7	0	160	254.95

**P110 Counter Sunk Cleanout Plug**

**Mpt**



P110-015C	1-1/2	25	150	160	14.02
P110-020C	2	25	150	160	15.22
P110-030C	3	50	0	160	15.74
P110-040C	4	25	0	160	17.71
P110-060C	6	10	0	160	38.38

**P116 Cap**

**Socket**



P116-015C	1-1/2	20	240	160	22.86
P116-020C	2	15	180	160	27.35
P116-030C	3	10	0	160	47.24
P116-040C	4	5	0	160	96.31
P116-060C	6	5	0	160	158.61
P116-080C	8	3	0	159	275.34
P116-100CF	10	1	3	159	339.73
P116-120CF	12	1	5	159	447.01

**P119 No-Hub Adapter**

**S x H**



P119-015C	1-1/2	25	0	160	40.23
P119-020C	2	25	0	160	42.93
P119-030C	3	20	0	160	54.07
P119-040C	4	15	0	160	78.97
P119-060C	6	5	0	160	171.51

Part Number	Size	Std Pk	Mstr Ctn	Prod Code	MSRP
-------------	------	--------	----------	-----------	------

**P123 Hub Adapter**

**H x S**



For connection to Cast Iron system. Requires packing and plastic lead. Warning: Do not use hot lead or oiled Oakum

P123-020C	2	20	0	160	47.71
P123-030C	3	25	0	160	60.08

**P130 Repair Coupling**

**H x H**



P130-015C	1-1/2	25	200	160	30.66
P130-020C	2	25	0	160	18.15
P130-030C	3	10	0	160	60.08
P130-040C	4	5	0	160	100.82
P130-060C	6	5	0	160	262.11
P130-080C	8	6	0	159	335.77
P130-100C	10	1	0	159	395.23

**P300 1/4 Bend (90° Ell)**

**H x H**



P300-015C	1-1/2	100	0	160	37.61
P300-020C	2	50	0	160	46.73
P300-030C	3	25	0	160	79.33
P300-040C	4	10	0	160	126.24
P300-060C	6	4	0	160	326.66
P300-080C	8	2	0	159	455.32
P300-100C	10	1	0	159	1052.31
P300-120C	12	1	0	159	1764.46

**P300S 1/4 Bend w/Side Inlet (90° Ell)**

**All Hub**



P300S-338C	3X3X2	10	0	160	174.48
------------	-------	----	---	-----	--------

**P302 1/4 Bend, Street (90° Street Ell)**

**H x Spig**



P302-015C	1-1/2	100	0	160	44.16
P302-020C	2	25	0	160	56.04
P302-030C	3	20	0	160	75.03
P302-040C	4	10	0	160	119.20
P302-060C	6	4	0	160	289.24
P302-080C	8	2	0	159	450.07
P302-100C	10	1	0	159	1048.29
P302-120C	12	1	0	159	1746.41



LabWaste® Product

## LabWaste® CPVC Corrosive Waste Drainage Systems

Part Number	Size	Std Pk	Mstr Ctn	Prod Code	MSRP
-------------	------	-----------	-------------	--------------	------

### P303 1/4 Bend w/Low Heel Inlet

H x H x H



P303-338C	3X3X2	25	0	160	109.71
P303-420C	4X4X2	6	0	160	226.47

### P304 1/4 Bend, Long Sweep (90° LS EII)

H x H



P304-015C	1-1/2	50	0	160	38.91
P304-020C	2	25	0	160	53.05
P304-030C	3	10	0	160	90.75
P304-040C	4	5	0	160	130.43
P304-060C	6	5	0	160	419.28

### P306 1/4 Bend Street w/Low Heel Inlet

S x H x H



P306-420C	4X4X2	5	0	160	226.47
-----------	-------	---	---	-----	--------

### P309 1/4 Bend Long Sweep, Street (90° LS Street EII)

H x Spig



P309-015C	1-1/2	50	0	160	40.92
P309-020C	2	25	0	160	54.85
P309-030C	3	20	0	160	93.40
P309-040C	4	5	0	160	132.72
P309-060C	6	5	0	160	340.34

### P319 1/6 Bend (60° EII)

H x H



P319-015C	1-1/2	40	0	160	37.69
P319-020C	2	25	0	160	45.51
P319-030C	3	20	0	160	82.22
P319-040C	4	10	0	160	131.81
P319-060CF	6	1	4	160	370.48
P319-120CF	12	1	0	159	543.85

### P320 1/6 Bend, Street (60° Street EII)

H x Spig



P320-015C	1-1/2	40	0	160	37.69
P320-020C	2	25	0	160	45.51
P320-030C	3	20	0	160	83.07
P320-040C	4	10	0	160	131.81

Part Number	Size	Std Pk	Mstr Ctn	Prod Code	MSRP
-------------	------	-----------	-------------	--------------	------

### P321 1/8 Bend (45° EII)

H x H



P321-015C	1-1/2	100	0	160	36.94
P321-020C	2	50	0	160	45.02
P321-030C	3	25	0	160	82.60
P321-040C	4	15	0	160	93.62
P321-060C	6	5	0	160	273.45
P321-080C	8	1	0	159	394.28
P321-100C	10	1	0	159	751.78
P321-120C	12	1	0	159	1362.03

### P323 1/8 Bend, Street (45° Street EII)

H x Spig



P323-015C	1-1/2	100	0	160	27.99
P323-020C	2	50	0	160	31.79
P323-030C	3	25	0	160	70.45
P323-040C	4	10	0	160	72.29
P323-060C	6	5	0	160	259.77
P323-080C	8	1	0	159	299.20
P323-100C	10	1	0	159	708.37
P323-120C	12	1	0	159	1233.78

### P324 1/16 Bend (22-1/2° EII)

H x H



P324-015C	1-1/2	50	0	160	37.69
P324-020C	2	25	0	160	44.94
P324-030C	3	20	0	160	81.25
P324-040C	4	15	0	160	100.08
P324-060C	6	3	0	160	270.87
P324-080C	8	2	0	159	294.01
P324-100CF	10	1	0	159	700.98
P324-120CF	12	1	0	159	939.03

### P326 1/16 Bend, Street (22-1/2° Street EII)

H x Spig



P326-015C	1-1/2	50	0	160	33.53
P326-020C	2	25	0	160	44.94
P326-030C	3	20	0	160	81.25
P326-040C	4	10	0	160	100.08
P326-060C	6	5	0	160	233.07
P326-080C	8	2	0	159	282.45



Part Number	Size	Std Pk	Mstr Ctn	Prod Code	MSRP
-------------	------	--------	----------	-----------	------

**P327 Double 1/4 Bend (3 Way Ell)**

All Hub



P327-015C	1-1/2	20	0	160	75.91
P327-020C	2	25	0	160	132.65
P327-030C	3	15	0	160	169.57
P327-040C	4	6	0	160	185.61
P327-241C	2X1-1/2X1-1/2	25	0	160	122.55

**P331 Vent Ell**

H x H



P331-015C	1-1/2	25	0	160	37.27
P331-020C	2	30	0	160	43.71
P331-030C	3	25	0	160	75.61
P331-040C	4	10	0	160	121.26
P331-060C	6	5	0	160	188.07

**P333 Vent Ell, Street**

H x Spig



P333-015C	1-1/2	25	0	160	39.86
P333-020C	2	20	0	160	47.18
P333-030C	3	25	0	160	84.01
P333-040C	4	10	0	160	134.73

**P400 Sanitary Tee**

All Hub



P400-015C	1-1/2	100	0	160	46.73
P400-020C	2	30	0	160	55.96
P400-030C	3	30	0	160	112.00
P400-040C	4	5	0	160	167.76
P400-060C	6	6	0	160	475.31
P400-080C	8	2	0	159	779.17
P400-100C	10	1	0	159	1747.85
P400-120C	12	1	0	159	2463.07

**P401 Sanitary Tee, Reducing**

All Hub



P401-241C	2X1-1/2X1-1/2	25	0	160	55.86
P401-251C	2X2X1-1/2	50	0	160	55.86
P401-257C	2X1-1/2X2	25	0	160	58.39
P401-337C	3X3X1-1/2	10	0	160	97.21
P401-338C	3X3X2	10	0	160	104.51
P401-419C	4X1-1/2	1	10	160	184.91
P401-420C	4X4X2	10	0	160	149.88
P401-422C	4X4X3	10	0	160	156.60

Part Number	Size	Std Pk	Mstr Ctn	Prod Code	MSRP
-------------	------	--------	----------	-----------	------

**P401 Sanitary Tee, Reducing (continued)**

All Hub

P401-530CF	6X3	1	2	160	498.54
P401-532C	6X4	4	0	160	391.56
P401-578CF	8X2	1	2	159	588.68
P401-582C	8X4	2	0	159	918.68
P401-585CF	8X6	1	0	159	954.15
P401-624CF	10X4	1	0	159	1067.25
P401-626CF	10X6	1	0	159	1221.60
P401-628CF	10X8	1	0	159	1363.78
P401-666CF	12X6	1	0	159	1540.41
P401-668CF	12X8	1	0	159	1707.51

**P403 Sanitary Tee, Street**

S x H x H



P403-015C	1-1/2	20	0	160	54.96
P403-020C	2	25	0	160	66.64
P403-030C	3	30	0	160	133.00
P403-040C	4	10	0	160	199.69
P403-060C	6	6	0	160	545.64
P403-080C	8	2	0	159	891.13
P403-100C	10	1	0	159	2122.87
P403-120C	12	1	0	159	3038.55

**P404 Sanitary Tee, Street, Reducing**

S x H x H



P404-241C	2X1-1/2X1-1/2	50	0	160	56.97
P404-251C	2X1-1/2	50	0	160	61.59
P404-337C	3X3X1-1/2	10	0	160	108.88
P404-338C	3X3X2	10	0	160	116.14

**P428 Double Sanitary Tee**

All Hub



P428-015C	1-1/2	25	0	160	70.39
P428-020C	2	25	0	160	83.00
P428-030C	3	8	0	160	111.01
P428-040C	4	6	0	160	148.16

**P429 Double Sanitary Tee, Reducing**

All Hub



P429-241C	2X1-1/2X1-1/2X1-1/2	25	0	160	92.61
P429-251C	2X2X1-1/2X1-1/2	25	0	160	92.72
P429-337C	3X3X1-1/2X1-1/2	6	0	160	144.02
P429-338C	3X3X2X2	10	0	160	156.01
P429-419C	4X4X1-1/2X1-1/2	7	0	160	154.27
P429-420C	4X4X2X2	7	0	160	156.46
P429-422C	4X4X3X3	8	0	160	172.75



LabWaste® Product

## LabWaste® CPVC Corrosive Waste Drainage Systems

Part Number	Size	Std Pk	Mstr Ctn	Prod Code	MSRP
-------------	------	--------	----------	-----------	------

### P429 Double Sanitary Tee, Reducing (continued)

All Hub

P429-532CF	6X6X4X4	1	2	159	481.62
------------	---------	---	---	-----	--------

### P439 Double Sanitary Tee with R&L Side Inlets

All Hub

P439-338C	3X3X3X3X2X2	4	0	160	189.11
P439-420C	4X4X4X4X2X2	4	0	160	229.19

### P441 Vent Tee

All Hub

P441-015C	1-1/2	25	0	160	89.26
P441-020C	2	25	0	160	91.45
P441-030C	3	10	0	160	117.65
P441-040C	4	5	0	160	166.13
P441-060C	6	4	0	160	406.53
P441-080C	8	2	0	159	800.71

### P444X Cleanout Tee w/Plug

H x H x Fpt

P444X-015C	1-1/2	20	0	160	55.63
P444X-020C	2	10	0	160	61.46
P444X-030C	3	10	0	160	128.86
P444X-040C	4	10	0	160	175.51
P444X-060C	6	2	0	160	473.97
P444X-080C	8	2	0	159	1254.55

### P445 Cleanout Tee

H x H x Fpt

P445-015C	1-1/2	20	0	160	47.19
P445-020C	2	25	0	160	52.26
P445-030C	3	10	0	160	112.81
P445-040C	4	10	0	160	157.48
P445-060C	6	3	0	160	494.95

### P445X Cleanout Tee with Counter Sunk Plug

H x H

P445X-015C	1-1/2	20	0	160	55.63
P445X-020C	2	10	0	160	61.46
P445X-030C	3	10	0	160	128.86
P445X-040C	4	10	0	160	175.51
P445X-060C	6	2	0	160	530.57
P445X-080CF	8	1	2	159	900.18
P445X-100CF	10	1	0	159	1514.11
P445X-120CF	12	1	0	159	3438.28

Part Number	Size	Std Pk	Mstr Ctn	Prod Code	MSRP
-------------	------	--------	----------	-----------	------

### P448 2-WAY Cleanout

All Hub

P448-030C	3	12	0	160	190.60
P448-040C	4	5	0	160	268.47

### P500 Double Fixture Fitting

All Hub

P500-020C	2X2X2X2	10	0	160	108.59
P500-030C	3X3X3X3	10	0	160	223.87
P500-241C	2X1-1/2X1-1/2X1-1/2	20	0	160	98.20
P500-251C	2X2X1-1/2X1-1/2	20	0	160	100.76
P500-338C	3X2X3X3	10	0	160	203.76

### P501 Combo Wye + 1/8 Bend (Long Turn Tee Wye)

All Hub

P501-015C	1-1/2	50	0	160	62.17
P501-020C	2	20	0	160	82.97
P501-030C	3	10	0	160	132.45
P501-040C	4	8	0	160	188.13

### P502 Combination Wye + 1/8 Bend Reducing (Long Turn Tee Wye)

All Hub

P502-251C	2X2X1-1/2	20	0	160	74.69
P502-337C	3X3X1-1/2	15	0	160	110.17
P502-338C	3X3X2	10	0	160	119.35
P502-420C	4X4X2	5	0	160	165.25
P502-422C	4X4X3	5	0	160	173.39
P502-578C	8X8X2	1	0	159	424.84

### P503 Combination Wye and 1/8 Bend (Two Piece)

All Hub

P503-040C	4	5	0	160	214.62
P503-060C	6	4	0	160	508.47
P503-080C	8	1	0	159	935.58
P503-100C	10	1	0	159	1218.05
P503-120C	12	1	0	159	1625.75

### P504 Combination Wye and 1/8 Bend, Reducing (Two Piece)

All Hub

P504-241C	2X1-1/2X1-1/2	5	0	160	96.75
P504-422C	4X4X3	5	0	160	167.38



Part Number	Size	Std Pk	Mstr Ctn	Prod Code	MSRP
-------------	------	-----------	-------------	--------------	------

**P504 Combination Wye and 1/8 Bend, Reducing (Two Piece)**

(continued)

All Hub

P504-528C <sup>1</sup>	6X2	5	0	160	344.09
P504-530C	6X3	5	0	160	384.86
P504-532C	6X4	5	0	160	399.69
P504-580C	8X3	2	0	159	564.25
P504-582C	8X4	2	0	159	618.78
P504-585C	8X6	1	0	159	628.08
P504-623C <sup>1</sup>	10X3	1	0	159	764.01
P504-624C	10X4	1	0	159	821.13
P504-626C	10X6	1	0	159	861.00
P504-628C	10X8	1	0	159	960.57
P504-663C <sup>1</sup>	12X3	1	0	159	1716.01
P504-664C	12X4	1	0	159	1815.45
P504-666C	12X6	1	0	159	1533.44
P504-668C <sup>1</sup>	12X8	1	0	159	1595.06
P504-670C	12X10	1	0	159	1836.13

<sup>1</sup> Sized with Bushing



**P507 Double Combination Wye and 1/8 Bend**

All Hub

P507-020C	2	10	0	160	164.02
P507-030C	3	10	0	160	281.89
P507-040C	4	5	0	160	534.17
P507-060C	6	2	0	160	1209.12
P507-080CF	8	1	0	159	1339.76
P507-251C	2X2X1-1/2X1-1/2	20	0	160	139.36
P507-338C	3X3X2X2	10	0	160	236.33
P507-420C	4X4X2X2	5	0	160	283.49
P507-422C	4X4X3X3	5	0	160	295.93
P507-530C	6X6X3X3	2	0	160	627.87
P507-532C	6X6X4X4	1	0	160	716.51
P507-578CF	8X2	1	2	159	693.77
P507-582CF	8X4	1	0	159	770.01
P507-585CF	8X6	1	0	159	1001.66
P507-624CF	10X10X4X4	1	0	159	1040.00
P507-626CF	10X10X6X6	1	0	159	1072.72
P507-628CF	10X10X8X8	1	0	159	1175.66
P507-668CF	12X12X8X8	1	0	159	2356.74
P507-670CF	12X12X10X10	1	0	159	3542.97



**P600 45° Wye**

All Hub

P600-015C	1-1/2	45	0	160	47.62
P600-020C	2	25	0	160	66.80
P600-030C	3	8	0	160	119.07
P600-040C	4	8	0	160	173.56
P600-060C	6	4	0	160	440.61
P600-080C	8	1	0	159	479.58
P600-100C	10	1	0	159	754.88

Made in the U.S.A.

Part Number	Size	Std Pk	Mstr Ctn	Prod Code	MSRP
-------------	------	-----------	-------------	--------------	------

**P600 45° Wye (continued)**

All Hub

P600-120C	12	1	0	159	1655.91
-----------	----	---	---	-----	---------



**P601 45° Wye, Reducing**

All Hub

P601-241C	2X1-1/2X1-1/2	25	0	160	67.65
P601-251C	2X2X1-1/2	25	0	160	66.80
P601-257C	2X1-1/2X2	10	0	160	66.80
P601-337C	3X3X1-1/2	15	0	160	102.52
P601-338C	3X3X2	12	0	160	111.00
P601-419C	4X4X1-1/2	10	0	160	150.73
P601-420C	4X4X2	10	0	160	159.76
P601-422C	4X4X3	10	0	160	166.59
P601-528C <sup>1</sup>	6X6X2	5	0	160	325.65
P601-530C	6X6X3	6	0	160	283.03
P601-532C	6X6X4	5	0	160	286.12
P601-580C	8X8X3	2	0	159	325.69
P601-582C	8X8X4	2	0	159	333.29
P601-585C	8X8X6	1	0	159	370.94
P601-621C <sup>1</sup>	10X10X2	1	0	159	865.37
P601-623C <sup>1</sup>	10X10X3	1	0	159	902.39
P601-624C <sup>1</sup>	10X10X4	1	0	159	818.76
P601-626C	10X10X6	1	0	159	658.96
P601-628C	10X10X8	1	0	159	685.32
P601-661C <sup>1</sup>	12X12X2	1	0	159	2008.87
P601-663C <sup>1</sup>	12X12X3	1	0	159	2026.28
P601-664C <sup>1</sup>	12X12X4	1	0	159	2031.02
P601-666C <sup>1</sup>	12X12X6	1	0	159	2037.85
P601-668C <sup>1</sup>	12X12X8	1	0	159	2163.76
P601-670C <sup>1</sup>	12X10	1	0	159	2109.81

<sup>1</sup> Sized with Bushing

**P602 45° Wye, Street**

S x H x H

P602-030C	3	10	0	160	150.88
P602-040C	4	10	0	160	183.42



**P611 Double Wye**

All Hub

P611-015C	1-1/2	40	0	160	89.38
P611-020C	2	20	0	160	94.47
P611-030C	3	15	0	160	170.78
P611-040C	4	5	0	160	389.57
P611-060C	6	2	0	160	677.48
P611-080CF	8	1	0	159	1314.93
P611-100CF	10	1	0	159	1977.80
P611-120CF	12	1	0	159	2935.12







LabWaste® Product

# LabWaste® CPVC Corrosive Waste Drainage Systems

Part Number	Size	Std Pk	Mstr Ctn	Prod Code	MSRP
-------------	------	-----------	-------------	--------------	------

## P612 Double Wye, Reducing

All Hub



P612-241C	2X1-1/2X1-1/2X1-1/2	10	0	160	139.24
P612-251C	2X2X1-1/2X1-1/2	10	0	160	141.75
P612-337C	3X3X1-1/2X1-1/2	10	0	160	158.04
P612-338C	3X3X2X2	15	0	160	174.44
P612-420C	4X4X2X2	5	0	160	337.80
P612-422C	4X4X3X3	5	0	160	345.11
P612-530C <sup>1</sup>	6X6X3X3	5	0	160	752.07
P612-532C	6X6X4X4	5	0	160	584.01
P612-580CF	8X8X3X3	1	0	159	696.84
P612-582CF	8X8X4X4	1	0	159	915.72
P612-585CF	8X8X6X6	1	0	159	977.57
P612-624CF	10X10X4X4	1	0	159	1159.37
P612-628CF	10X10X8X8	1	0	159	1562.76
P612-664CF	12X12X4X4	1	0	159	3012.99

## P335 Trap Elbow (for use with Traps only)

H x S



P335-030C	3	30	0	160	94.16
P335-040C	4	25	0	160	218.60

## P700 Return Bend

H x H



P700-015C	1-1/2	20	0	160	62.33
P700-020C	2	35	0	160	87.04
P700-030C	3	8	0	160	129.51
P700-040C	4	6	0	160	246.71
P700-060C	6	2	0	160	357.73
P700-080C	8	1	0	159	484.00
P700-100C	10	1	0	159	728.71
P700-120C	12	2	0	159	1203.07

## P704P Tail Piece Adapter

Spig x Slip w/Plastic Nut



P704P-015C	1-1/2	25	0	160	24.43
------------	-------	----	---	-----	-------

## P705 S-Trap

H x H



P705-015C	1-1/2	25	0	160	97.78
P705-020C	2	25	0	160	136.45
P705-030C	3	10	0	160	248.58
P705-040C	4	5	0	160	449.78

Part Number	Size	Std Pk	Mstr Ctn	Prod Code	MSRP
-------------	------	-----------	-------------	--------------	------

## P705R Running Trap

H x H



P705R-015C	1-1/2	25	0	160	97.78
P705R-020C	2	25	0	160	136.45
P705R-030C	3	10	0	160	248.58
P705R-040C	4	5	0	160	449.29
P705R-060C	6	1	3	160	524.97

## P706X P-Trap

H x H



P706X-015C	1-1/2	25	0	160	73.33
P706X-020C	2	25	0	160	102.33
P706X-030C	3	10	0	160	185.75
P706X-040C	4	4	0	160	330.17
P706X-060C	6	1	0	160	980.01
P706X-080C	8	1	0	159	1158.79
P706X-100C	10	1	0	159	1846.59
P706X-120C	12	1	0	159	2074.94

## P707X P-Trap w/Cleanout

H x H



P707X-015C	1-1/2	10	0	160	82.05
------------	-------	----	---	-----	-------

## P708P P-Trap w/Plastic Nut (Union Connection)

H x H



P708P-015C	1-1/2	25	0	160	63.85
P708P-020C	2	25	0	160	110.59

## P711P L.A Pattern P-Trap w/Plastic Nut

(Union Connection w/Slip Joint)  
Slip x H w/Plastic Nut



P711P-015C	1-1/2	25	0	160	139.58
------------	-------	----	---	-----	--------

## P712 Jar Trap

Spig x H



32 oz. PP Jar

P712-015C	1-1/2	1	0	169	126.19
-----------	-------	---	---	-----	--------

LabWaste® CPVC Corrosive Waste Drainage Systems



Part Number	Size	Std Pk	Mstr Ctn	Prod Code	MSRP
-------------	------	--------	----------	-----------	------

**P712P Jar Trap w/Tail Piece Adapter**

**Slip x H**

32 oz. PP Jar

P712P-015C	1-1/2	1	0	169	150.61
------------	-------	---	---	-----	--------



**P720 Drum Trap**

**H x H**

P720-015C	1-1/2	4	0	160	306.58
P720-020C	2	4	0	160	485.62
P720-030C	3	4	0	160	672.80
P720-040C	4	4	0	160	772.14



**Flange, Van Stone Style CPVC**

**Soc**

854-015C	1-1/2	20	0	090	45.38
854-020C	2	10	0	090	54.95
854-030C	3	10	0	090	119.18
854-040C	4	5	0	090	160.94
854-060C	6	5	0	090	274.25
854-080C	8	2	0	090	825.18
854-100C	10	2	0	091	1986.49
854-120C	12	2	0	091	2980.81
854-140C	14	1	0	095	3358.87
854-160C	16	1	0	095	4198.60



**Waste Assembly**

**Sink Outlet**

LWWA-1	1-1/2	10	0	169	111.36
--------	-------	----	---	-----	--------



**LabWaste® Air Admittance Valve**

**Spigot**

Maximum 6 DFU (Drainage Fixture Units)

AAV-015C	1-1/2	12	0	286	64.62
----------	-------	----	---	-----	-------



**LW1500 Floor Drain with CPVC Adjustable Top w/5" Round Grate**

LW1500-015C	1-1/2X5	4	0	169	449.85
LW1500-020C	2X5	4	0	169	449.85
LW1500-030C	3X5	4	0	169	449.85
LW1500-040C	4X5	4	0	169	449.85



Part Number	Size	Std Pk	Mstr Ctn	Prod Code	MSRP
-------------	------	--------	----------	-----------	------

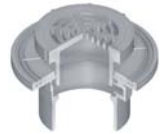
**LW1520 Floor Drain with CPVC Adjustable Top w/5" Round Grate & Strainer**

LW1520-015C	1-1/2X5	3	0	169	514.36
LW1520-020C	2X5	3	0	169	514.36
LW1520-030C	3X5	3	0	169	514.36
LW1520-040C	4X5	3	0	169	514.36



**LW150M Floor Drain with CPVC Adjustable Top w/5" Round Grate & Membrane Collar**

LW150M-015C	1-1/2X5	4	0	169	499.09
LW150M-020C	2X5	4	0	169	499.09
LW150M-030C	3X5	4	0	169	499.09
LW150M-040C	4X5	4	0	169	499.09



**LW152M Floor Drain with CPVC Adjustable Top w/5" Round Grate, Strainer & Membrane Collar**

LW152M-015C	1-1/2X5	4	0	169	561.87
LW152M-020C	2X5	4	0	169	561.87
LW152M-030C	3X5	4	0	169	561.87
LW152M-040C	4X5	4	0	169	561.87



**Floor Drain with Stainless Steel Adjustable Top w/Round Grate**

LW1500-015S	1-1/2X5	4	0	169	475.31
LW1600-015S	1-1/2X6	4	0	169	497.39
LW1700-015S	1-1/2X7	4	0	169	529.64
LW1800-015S	1-1/2X8	4	0	169	690.89
LW1500-020S	2X5	4	0	169	475.31
LW1600-020S	2X6	4	0	169	497.39
LW1700-020S	2X7	4	0	169	529.64
LW1800-020S	2X8	4	0	169	690.89
LW1500-030S	3X5	4	0	169	475.31
LW1600-030S	3X6	4	0	169	497.39
LW1700-030S	3X7	2	0	169	529.64
LW1800-030S	3X8	4	0	169	690.89
LW1500-040S	4X5	4	0	169	475.31
LW1600-040S	4X6	4	0	169	497.39
LW1700-040S	4X7	4	0	169	529.64
LW1800-040S	4X8	4	0	169	690.89



**Floor Drain with Stainless Steel Adjustable Top w/Round Grate & Membrane Collar**

LW150M-015S	1-1/2X5	4	0	169	524.54
LW160M-015S	1-1/2X6	4	0	169	546.59





LabWaste® Product

## LabWaste® CPVC Corrosive Waste Drainage Systems

Part Number	Size	Std Pk	Mstr Ctn	Prod Code	MSRP
-------------	------	-----------	-------------	--------------	------

### Floor Drain with Stainless Steel Adjustable Top w/Round Grate & Membrane Collar (continued)

LW170M-015S	1-1/2X7	4	0	169	578.87
LW180M-015S	1-1/2X8	4	0	169	740.13
LW150M-020S	2X5	1	5	169	524.54
LW160M-020S	2X6	4	0	169	546.59
LW170M-020S	2X7	4	0	169	578.87
LW180M-020S	2X8	4	0	169	740.13
LW150M-030S	3X5	4	0	169	524.54
LW160M-030S	3X6	4	0	169	546.59
LW170M-030S	3X7	4	0	169	578.87
LW180M-030S	3X8	2	0	169	740.13
LW150M-040S	4X5	4	0	169	524.54
LW160M-040S	4X6	4	0	169	546.59
LW170M-040S	4X7	4	0	169	578.87
LW180M-040S	4X8	4	0	169	740.13



### LW1510 Floor Cleanout w/Stainless Steel Adjustable Round Top & Solid Access Cover

LW1510-015S	1-1/2X5	4	0	169	509.25
LW1510-020S	2X5	6	0	169	509.25
LW1510-030S	3X5	4	0	169	509.25
LW1510-040S	4X5	4	0	169	509.25



### LW151M Floor Cleanout w/Stainless Steel Adjustable Round Top, Solid Access Cover & Membrane Collar

LW151M-015S	1-1/2X5	4	0	169	543.22
LW151M-020S	2X5	4	0	169	543.22
LW151M-030S	3X5	4	0	169	543.22
LW151M-040S	4X5	4	0	169	543.22

### LWTP CPVC Tail Piece

May be cut to desired length

LWTP-015060	1-1/2X6	10	0	169	46.54
LWTP-015120	1-1/2X12	20	0	169	69.81
LWTP-015140	1-1/2X14	50	0	169	86.51



### LWTPN CPVC Tail Piece with Nut

May be cut to desired length

LWTPN-015060	1-1/2X6	1	25	169	58.73
LWTPN-015120	1-1/2X12	1	25	169	81.99
LWTPN-015140	1-1/2X14	1	25	169	93.93



Part Number	Size	Std Pk	Mstr Ctn	Prod Code	MSRP
-------------	------	-----------	-------------	--------------	------

### Pipe - LabWaste® CPVC

10' Lengths, Price Per Foot



May be cut to desired length

LW-015	1-1/2	10	0	161	8.56
LW-020	2	10	0	161	11.58
LW-030	3	10	0	161	20.93
LW-040	4	10	0	161	29.72
LW-060	6	10	0	161	53.64
LW-080	8	10	0	157	103.63
LW-100	10	10	0	157	167.80
LW-120	12	10	0	157	221.67
LW-140	14	10	0	158	270.34
LW-160	16	10	0	158	352.81
LW-180	18	10	0	158	488.01
LW-200	20	10	0	158	970.85
LW-240	24	10	0	158	1350.83

### Pipe Extenders, LabWaste®

Pipe O.D. Spigot x Pipe I.D. Spigot



S0301-15C	1-1/2	50	0	169	6.79
S0301-20C	2	25	0	169	10.95
S0301-30C	3	25	0	169	23.79
S0301-40C	4	20	0	169	35.84

### LW-5 LabWaste® One-Step CPVC Cement

LW5-020	Pint	12	0	704	47.91
LW5-030	Quart	12	0	704	63.86
LW5-040	Gallon	6	0	704	259.81
LW5-050	5 Gallon	1	0	704	1299.11



### AVERAGE NUMBER OF JOINTS Per Quart of Solvent Cement

PIPE DIAMETER	NUMBER OF JOINTS
1/2"	300
3/4"	200
1"	125
1-1/2"	90
2"	60
3"	40
4"	30
6"	10
8"	5
10"	2-3
12"	1-2

These figures are based on laboratory tests. Due to many field variations, these should be used as a **general guide** only.



Part Number	Size	Std Pk	Mstr Ctn	Prod Code	MSRP
-------------	------	--------	----------	-----------	------



**Cement Empty Cans**

MT-654	Pint	192	0	710	5.79
MT-651	Quart	100	0	710	7.52
MT-653	Quart	12	0	710	8.80
MT-647	Gallon	40	0	710	17.77
MT-648	Gallon	40	0	710	19.71

MT-647, MT-651 & MT-654 have 1-3/4" Screw Neck  
 MT-648 has 2-7/8" Screw Neck  
 MT-653 is Paint-Type Can

**Cement Brush**

For Pint and Quart Cans



KD-110	4-1/2" Length	25	0	710	10.09
KD-112	5-1/2" length	25	0	710	10.09

1" Brush w/1-3/4" Screw Cap, for pipe size 3/4" - 2"

**Cement Cap Swab**

5020	4" Length	24	0	710	15.67
------	-----------	----	---	-----	-------

Fits 1-3/4" Neck Quart Cans (MT-651). 4" length for pipe size 3" to 8"



**Cement Large Mouth Can Swab**

4020	4" Length	24	0	710	23.12
------	-----------	----	---	-----	-------

Fits 2-7/8" Neck Gallon Can MT-648



**Cement Swab with Heavy Handle**

4520	4" length	12	0	710	19.57
------	-----------	----	---	-----	-------

For Pipe Sizes 6" & Larger



**Cement Roller**

3020	3" length	20	0	710	16.87
------	-----------	----	---	-----	-------

Fits Paint Type Quart Can (MT-653). For use with pipe sizes 3" to 6"



**Cement Large Roller**

7020	7" length	20	0	710	21.02
------	-----------	----	---	-----	-------

Fits 2-7/8" Neck Gallon Can MT-648



Part Number	Size	Std Pk	Mstr Ctn	Prod Code	MSRP
-------------	------	--------	----------	-----------	------



**Cement Roller with Heavy Handle**

Replaceable Cover					
5520	4" length	12	0	710	15.97
6520	6" length	12	0	710	19.57

For Pipe Sizes 6" & Larger

**Cement Cap Dauber**

DP-75	3/4" for Pint	50	0	710	1.38
DP-125	1-1/4" for Pint	50	0	710	1.66
DQ-125	1-1/4" for Quart	50	0	710	1.66

DP Fits Pint Cans  
 DQ Fits Quart Cans



**Cement Can-Mate Dauber**

CM-75	3/4"	50	0	710	5.54
CM-150	1-1/4"	50	0	710	5.54

3/4" Diameter for pipe size to 1-1/2"  
 1-1/4" Diameter for pipe size 1-1/2" to 3"

